

WAYNESBORO, VIRGINIA

AL-10584 (FAA)

22363

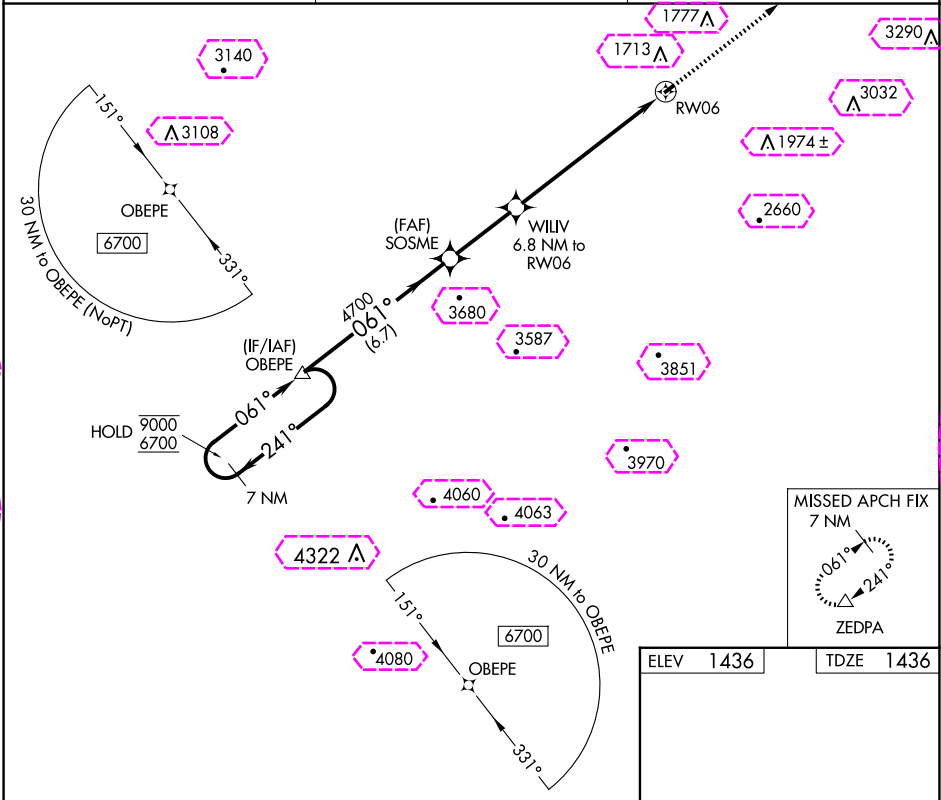
APP CRS	Rwy Idg	2004
061°	TDZE	1436
	Apt Elev	1436

# RNAV (GPS) RWY 6

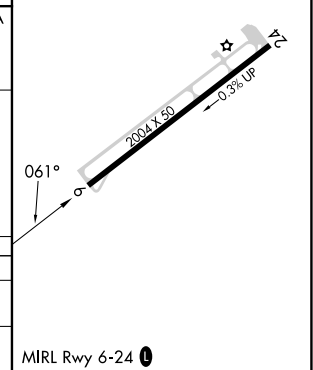
EAGLE'S NEST (W13)

RNP APCH.	MISSED APPROACH: Climb to 6300 direct ZEDPA and hold, continue climb-in-hold to 6300.
NA Rwy 6 helicopter visibility reduction below 1 SM NA. Procedure NA at night.	

AWOS-3PT 118.625	POTOMAC APP CON 132.85 323.125	UNICOM 123.05 (CTAF) 0
---------------------	-----------------------------------	---------------------------



7 NM Holding Pattern	OBEPE	SOSME	WILV 6.8 NM to RW06	RW06
9000 6700	241° 061°	4700	3700	
	6.7 NM	3 NM	6.8 NM	
CATEGORY	A	B	C	D
LNVA MDA	2440-3	1004 (1100-3)	NA	NA
CIRCLING	2440-3	1004 (1100-3)	NA	NA



WAYNESBORO, VIRGINIA  
Amdt 1A 10SEP20

38°05'N-78°57'W

EAGLE'S NEST (W13)  
RNAV (GPS) RWY 6

WAYNESBORO, VIRGINIA

AL-10584 (FAA)

25219

APP CRS	Rwy Ldg	2004
061°	TDZE	1436
	Apt Elev	1436

# RNAV (GPS) RWY 6

EAGLE'S NEST (W13)

RNP APCH.

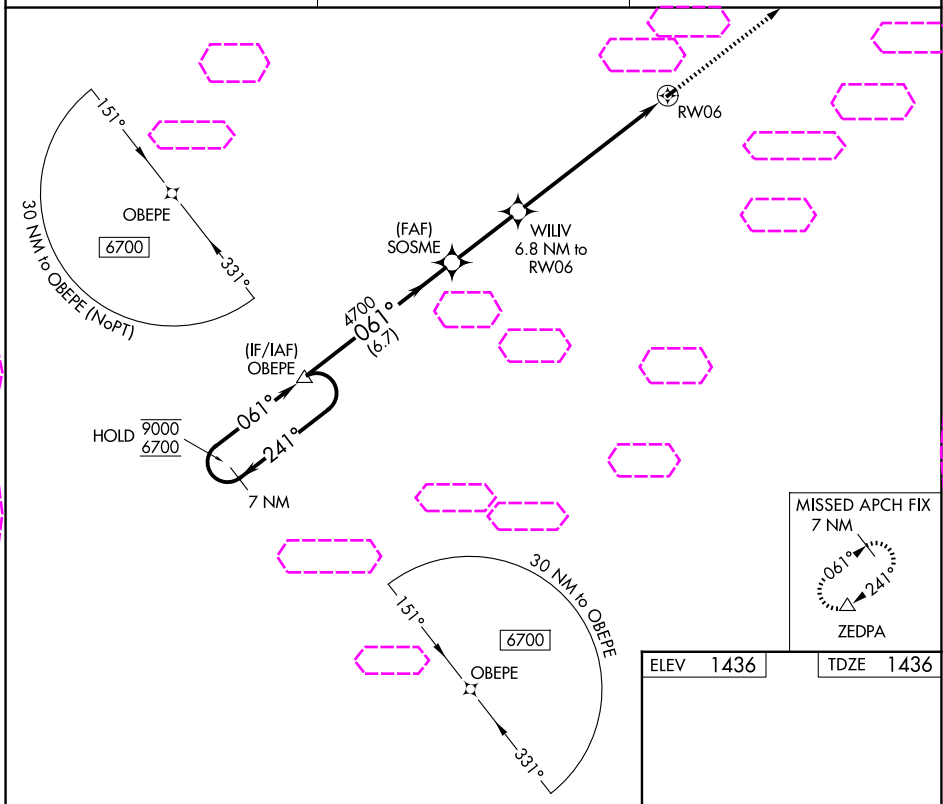
NA Rwy 6 helicopter visibility reduction below 1 SM NA. Procedure NA at night.

MISSED APPROACH: Climb to 6300 direct ZEDPA and hold, continue climb-in-hold to 6300.

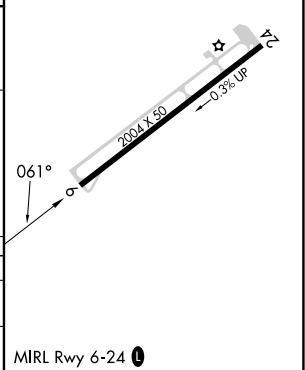
AWOS-3PT  
118.625

POTOMAC APP CON  
132.85 323.125

UNICOM  
123.05 (CTAF) 0



7 NM Holding Pattern		Visual Segment - Obstacles.		6300	ZEDPA
				6.7 NM	3 NM
CATEGORY	A	B	C	D	
LNAV MDA	2440-3	1004 (1100-3)	NA		
CIRCLING	2440-3	1004 (1100-3)	NA		



WAYNESBORO, VIRGINIA  
Amdt 1A 10SEP20

38°05'N-78°57'W

# RNAV (GPS) RWY 6

EAGLE'S NEST (W13)

NE-3, 07 AUG 2025 to 04 SEP 2025

NE-3, 07 AUG 2025 to 04 SEP 2025