

WAYNESBORO, VIRGINIA

AL-10584 (FAA)

22363

APP CRS	Rwy Idg	2004
241°	TDZE	1436
	Apt Elev	1436

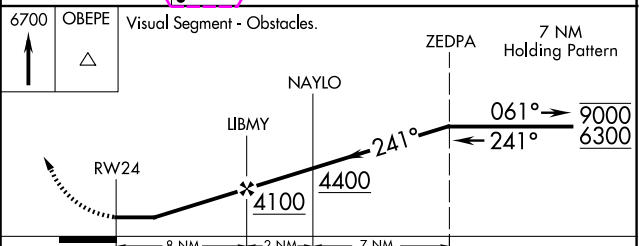
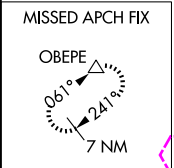
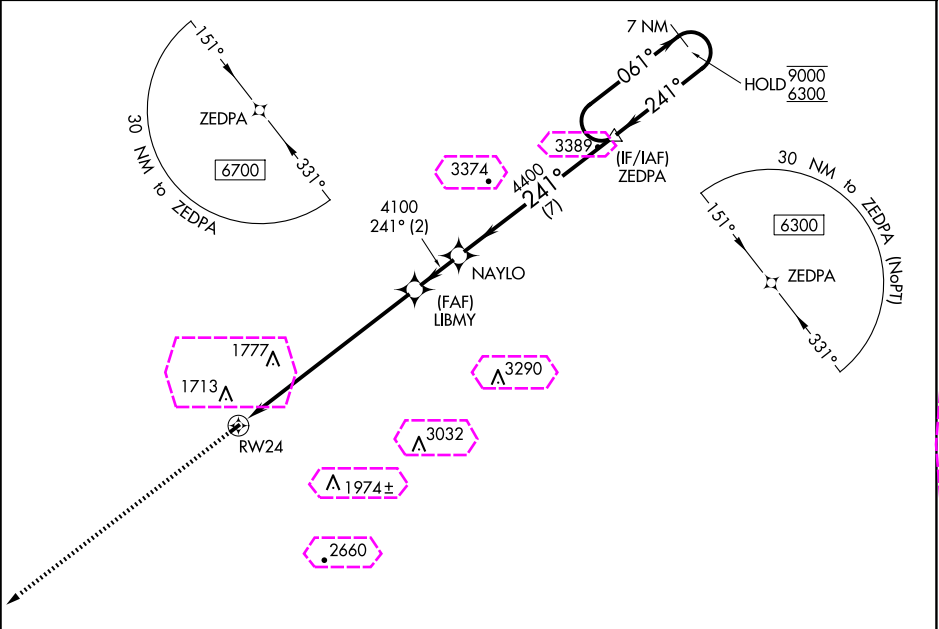
# RNAV (GPS) RWY 24

EAGLE'S NEST (W13)

RNP APCH.  
NA Procedure NA at night. Rwy 24 helicopter visibility reduction below 1 SM NA.

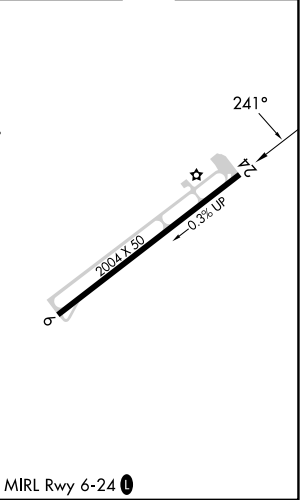
MISSED APPROACH: Climb to 6700 direct OBEPE and hold, continue climb-in-hold to 6700.

AWOS-3PT 118.625	POTOMAC APP CON 132.85 323.125	UNICOM 123.05 (CTAF) 0
---------------------	-----------------------------------	---------------------------



ELEV 1436	TDZE 1436
-----------	-----------

CATEGORY	A	B	C	D
LNAV MDA	2640-3	1204 (1300-3)	NA	NA
CIRCLING	2640-3	1204 (1300-3)	NA	NA



WAYNESBORO, VIRGINIA  
Amdt 1A 10SEP20

38°05'N-78°57'W

# RNAV (GPS) RWY 24

EAGLE'S NEST (W13)

NE-3, 10 JUL 2025 to 07 AUG 2025

NE-3, 10 JUL 2025 to 07 AUG 2025

WAYNESBORO, VIRGINIA

AL-10584 (FAA)

25219

APP CRS	Rwy Ldg	2004
241°	TDZE	1436
	Apt Elev	1436

# RNAV (GPS) RWY 24

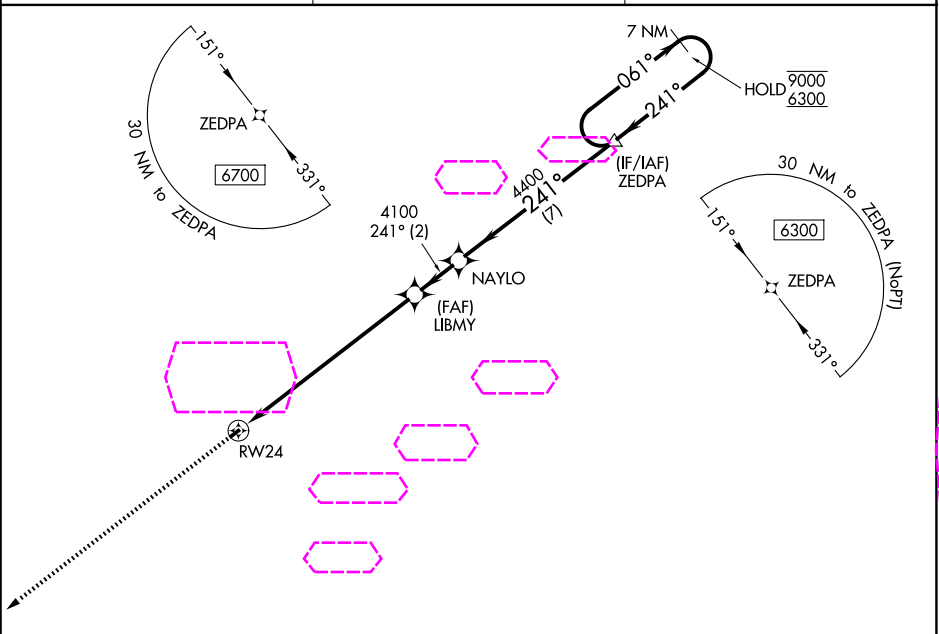
EAGLE'S NEST (W13)

RNP APCH.

NA Procedure NA at night. Rwy 24 helicopter visibility reduction below 1 SM NA.

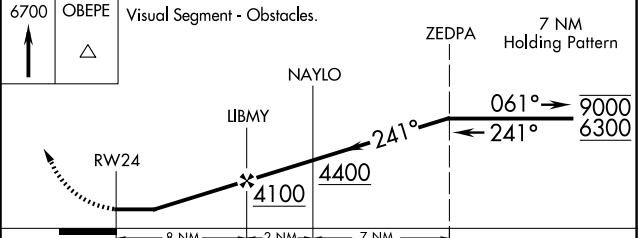
MISSED APPROACH: Climb to 6700 direct OBEPE and hold, continue climb-in-hold to 6700.

AWOS-3PT 118.625	POTOMAC APP CON 132.85 323.125	UNICOM 123.05 (CTAF) 0
---------------------	-----------------------------------	---------------------------

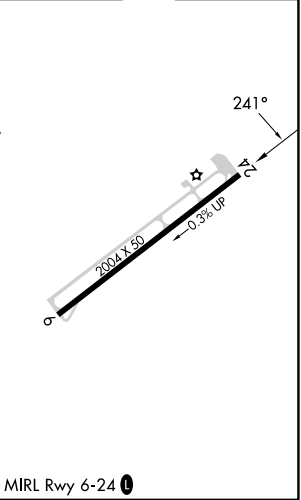


NE-3, 07 AUG 2025 to 04 SEP 2025

NE-3, 07 AUG 2025 to 04 SEP 2025



ELEV 1436	TDZE 1436
-----------	-----------



CATEGORY	A	B	C	D
LNAV MDA	2640-3	1204 (1300-3)	NA	NA
CIRCLING	2640-3	1204 (1300-3)	NA	NA

MIRL Rwy 6-24 0

WAYNESBORO, VIRGINIA  
Amdt 1A 10SEP20

38°05'N-78°57'W

# RNAV (GPS) RWY 24

EAGLE'S NEST (W13)