

23334

WAAS CH <b>72942</b> <b>W20A</b>	APP CRS <b>203°</b>	Rwy Idg <b>4000</b> TDZE <b>782</b> Apt Elev <b>782</b>
--	------------------------	---

RNAV (GPS) RWY 20  
LEITCHFIELD-GRAYSON COUNTY (M20)

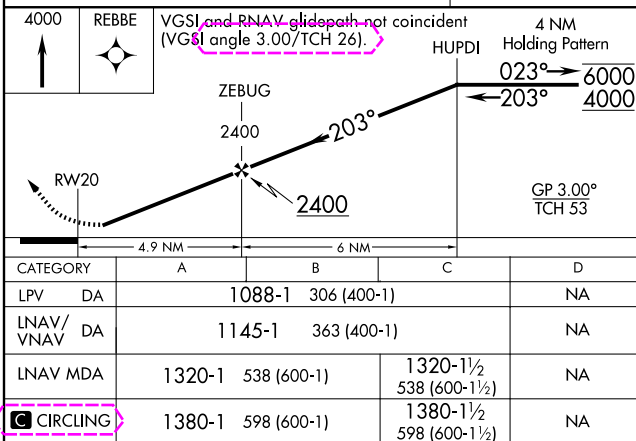
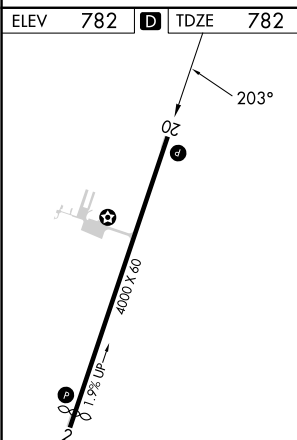
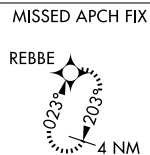
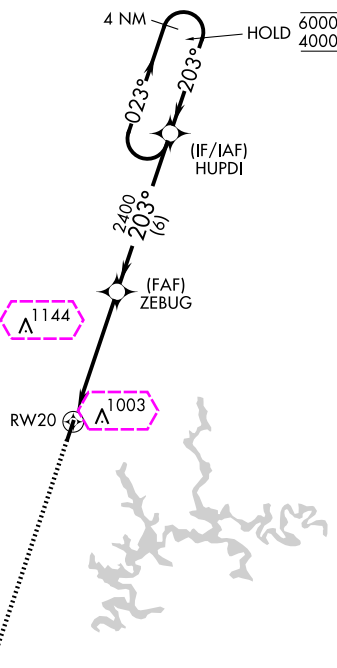
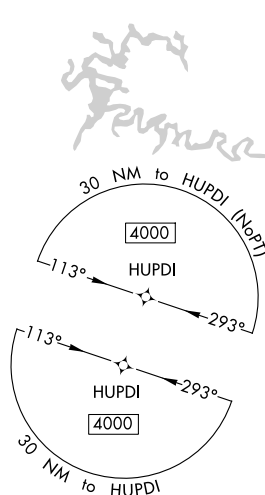
RNP APCH.

**T** Rwy 20 helicopter visibility reduction below 1 SM NA.  
**A** Baro-VNAV NA. Use Elizabethtown altimeter setting.  
**NA** Straight-in Rwy 20 NA at night, Circling Rwy 20 NA at night.

**MISSED APPROACH:** Climb to 4000 direct REBBE and hold, continue climb-in-hold to 4000.

EKX AWOS-3  
121.025

INDIANAPOLIS CENTER  
121.175 353.65

UNICOM  
123.0 (CTAF) **L**

LEITCHFIELD, KENTUCKY  
Orig 25APR19

37°24'N-86°16'W

LEITCHFIELD-GRAYSON COUNTY (M20)  
RNAV (GPS) RWY 20

LEITCHFIELD, KENTUCKY

AL-10547 (FAA)

25219

WAAS CH <b>72942</b> <b>W20A</b>	APP CRS <b>203°</b>	Rwy Ldg <b>4000</b> TDZE <b>782</b> Apt Elev <b>782</b>
--	------------------------	---

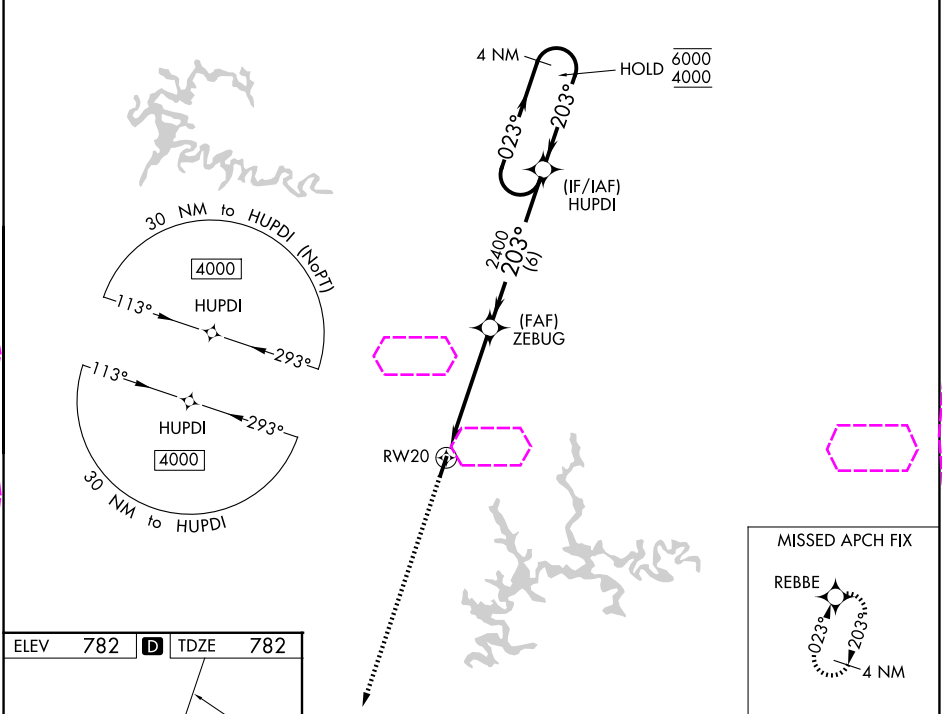
RNAV (GPS) RWY 20  
LEITCHFIELD-GRAYSON COUNTY (M20)

RNP APCH.

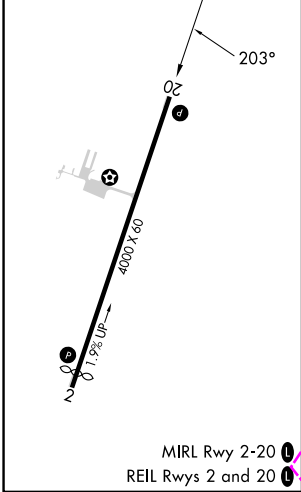
**NA** Rwy 20 helicopter visibility reduction below 1 SM NA.  
Baro-VNAV NA. Use Elizabethtown altimeter setting.  
Straight-in Rwy 20 NA at night, Circling Rwy 20 NA at night.

MISSED APPROACH: Climb to 4000 direct  
REBBE and hold, continue climb-in-hold to 4000.

EKX AWOS-3 <b>118.55</b>	INDIANAPOLIS CENTER <b>121.175 353.65</b>	UNICOM <b>123.0 (CTAF) 0</b>
-----------------------------	--	---------------------------------



ELEV 782	<b>D</b>	TDZE 782
----------	----------	----------



4000 REBBE		VGSI and RNAV glidepath not coincident (VGSI Angle 3.00/TCH 26).		4 NM Holding Pattern	
↑		ZEBUG 2400		023° → 6000 ← 203° 4000	
RW20		2400		GP 3.00° TCH 53	
4.9 NM		6 NM			
CATEGORY	A	B	C	D	
LPV DA	1088-1	306 (400-1)		NA	
LNAV/VNAV DA	1145-1	363 (400-1)		NA	
LNAV MDA	1320-1	538 (600-1)	1320-1½ 538 (600-1½)	NA	
<b>CIRCLING</b>	1380-1	598 (600-1)	1380-1½ 598 (600-1½)	NA	

LEITCHFIELD, KENTUCKY

Orig 25APR19

37°24'N-86°16'W

LEITCHFIELD-GRAYSON COUNTY (M20)

RNAV (GPS) RWY 20

SE-1, 07 AUG 2025 to 04 SEP 2025

SE-1, 07 AUG 2025 to 04 SEP 2025