

ST GEORGE, UTAH

AL-10546 (FAA)

25163

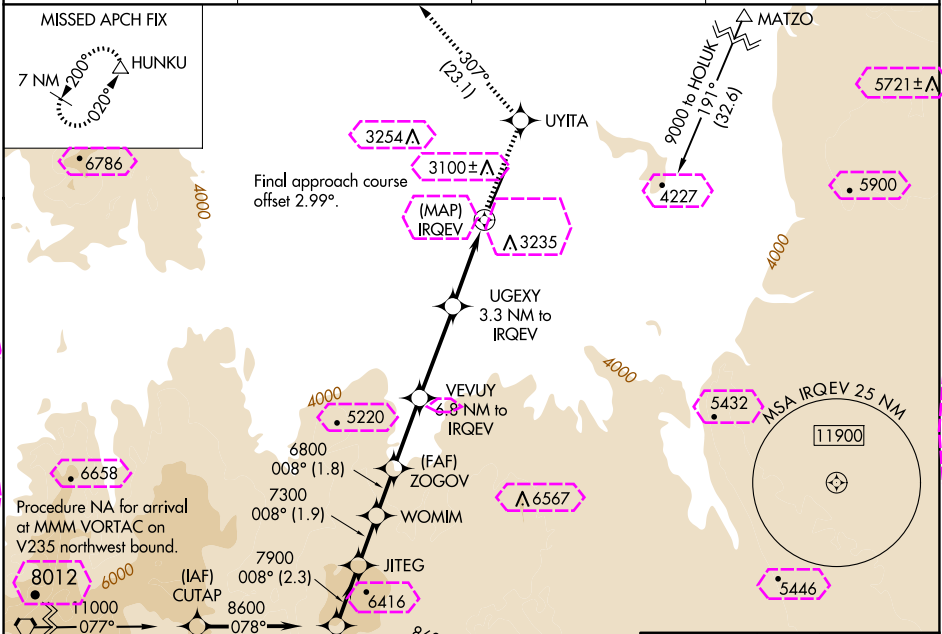
WAAS CH 50220 W01A	APP CRS 008°	Rwy Ldg TDZE Apt Elev	9300 2851 2884
--	------------------------	-----------------------------	---

RNAV (GPS) RWY 1

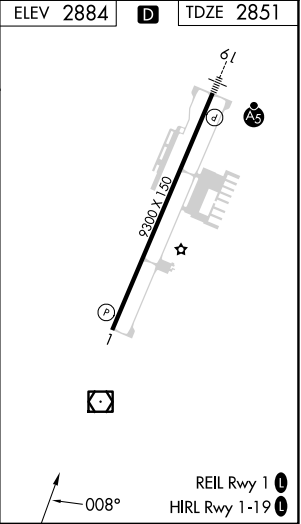
ST GEORGE RGNL (SGU)

RNP APCH-GPS.	MISSED APPROACH: Climb to 9800 direct UYITA and on track 307° to HUNKU and hold, continue climb-in-hold to 9800.
Helicopter visibility reduction below 1 SM NA. # Missed approach requires a minimum climb of 225 feet per NM to 6800. † Missed approach requires a minimum climb of 220 feet per NM to 6700.	

AWOS-3PT 135.075	LOS ANGELES CENTER 124.2 343.6	CLNC DEL 133.3	UNICOM 123.075 (CTAF) 0
----------------------------	--	--------------------------	-----------------------------------



VGS1 and RNAV glidepath not coincident (VGS1 Angle 3.00 /TCH 50).		9800 UYITA	tr 307°	HUNKU
ARENT	JITEG WOMIM ZOGOV VEVUY 6.8 NM to IRQEV	UGEXY 3.3 NM to IRQEV	IRQEV	
8600	008°	7900	7300	6800
GP 3.60°	TCH 60	6800	*5700	*4340
← 2.3 NM → 1.9 NM → 1.8 NM → 2.7 NM → 3.5 NM → 3.3 NM → 0.5				
CATEGORY	A	B	C	D
LPV DA#	3170-1 319 (300-1)			NA
RNAV MDA †	3340-1	489 (500-1)	3340-1 3/8 489 (500-1 3/8)	NA
RNAV MDA	3760-1 1/4	909 (900-1 1/4)	3760-2 1/2 909 (900-2 1/2)	NA
CIRCLING	3760-1 1/4 876 (900-1 1/4)	3800-1 1/4 916 (1000-1 1/4)	3860-3 976 (1000-3)	NA



SW-4, 10 JUL 2025 to 07 AUG 2025

SW-4, 10 JUL 2025 to 07 AUG 2025

ST GEORGE, UTAH
Orig-D 09SEP21

37°02'N-113°31'W

ST GEORGE RGNL (SGU)
RNAV (GPS) RWY 1

