

ST GEORGE, UTAH

AL-10546 (FAA)

25163

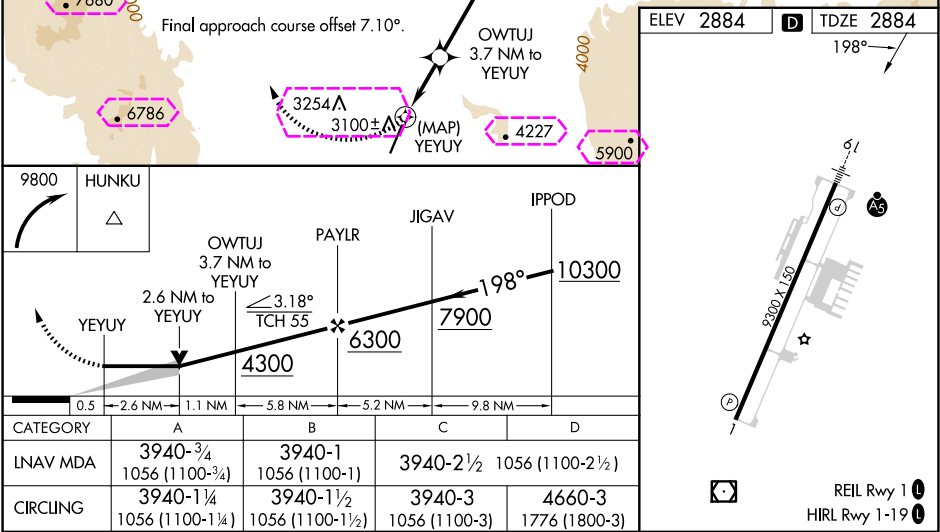
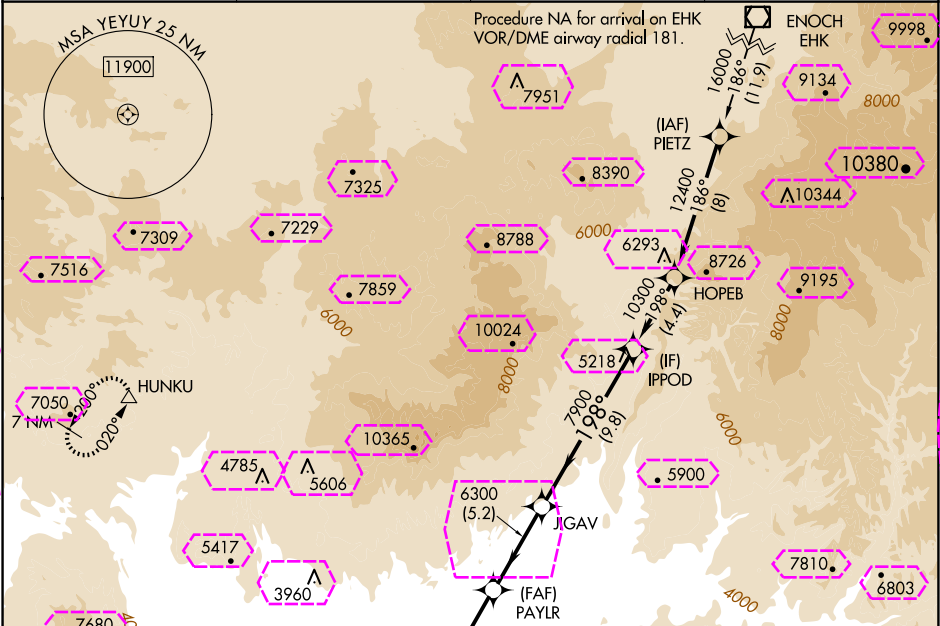
APP CRS	Rwy Ldg	9300
198°	TDZE	2884
	Apt Elev	2884

RNAV (GPS) RWY 19

ST GEORGE RGNL (SGU)

RNP APCH-GPS.	MALSR	MISSED APPROACH: Climbing right turn to 9800 direct HUNKU and hold, continue climb-in-hold to 9800.

AWOS-3PT 135.075	LOS ANGELES CENTER 124.2 343.6	CLNC DEL 133.3	UNICOM 123.075 (CTAF) 0
---------------------	-----------------------------------	-------------------	----------------------------



ST GEORGE, UTAH
Orig-E 09SEP21

37°02'N-113°31'W

ST GEORGE RGNL (SGU)
RNAV (GPS) RWY 19

SW-4, 10 JUL 2025 to 07 AUG 2025

SW-4, 10 JUL 2025 to 07 AUG 2025

ST GEORGE, UTAH



AL-10546 (FAA)

25219

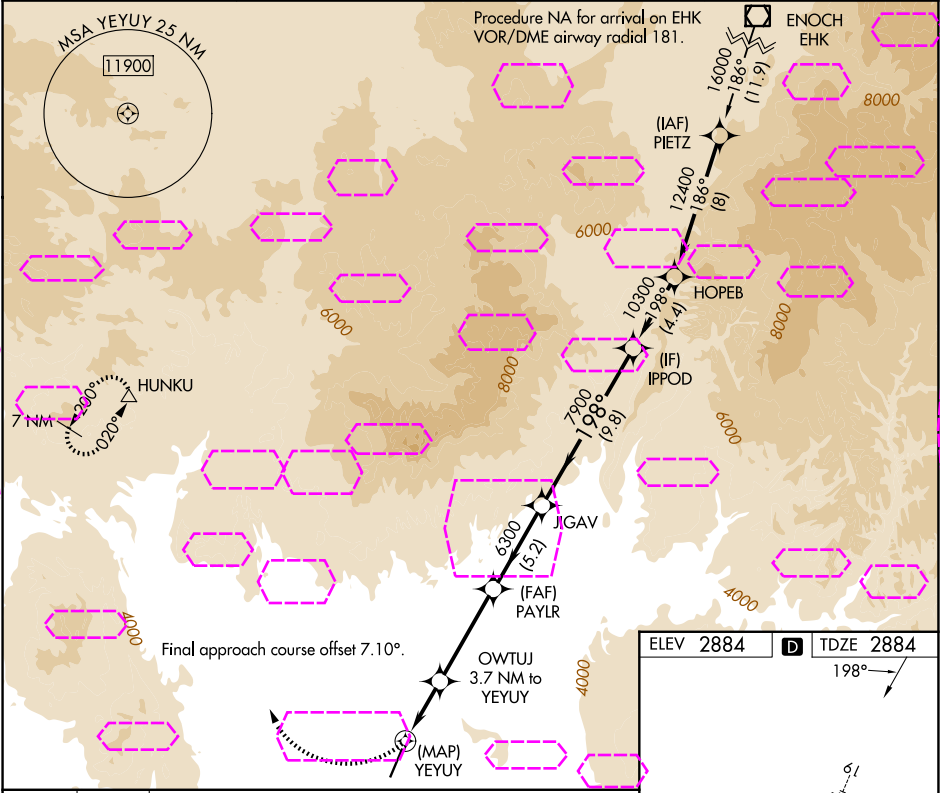
APP CRS	Rwy Ldg	9300
198°	TDZE	2884
	Apt Elev	2884


RNAV (GPS) RWY 19

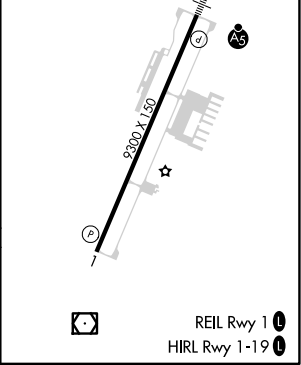
ST GEORGE RGNL (SGU)

RNP APCH-GPS.	MALSR	MISSED APPROACH: Climbing right turn to 9800 direct HUNKU and hold, continue climb-in-hold to 9800.
 -5°C		

AWOS-3PT 135.075	LOS ANGELES CENTER 124.2 343.6	CLNC DEL 133.3	UNICOM 123.075 (CTAF) 0
---------------------	-----------------------------------	-------------------	----------------------------



9800	HUNKU					
						
	YUYUY	OWTUJ 3.7 NM to YUYUY	PAYLR	JIGAV	IPPOD	
		2.6 NM to YUYUY	≤3.18° TCH 55		198°	10300
			4300	6300	7900	
	0.5	2.6 NM	1.1 NM	5.8 NM	5.2 NM	9.8 NM
CATEGORY	A	B	C	D		
LNNAV MDA	3940-3/4 1056 (1100-3/4)	3940-1 1056 (1100-1)	3940-2 1/2 1056 (1100-2 1/2)			
CIRCLING	3940-1 1/4 1056 (1100-1 1/4)	3940-1 1/2 1056 (1100-1 1/2)	3940-3 1056 (1100-3)	4660-3 1776 (1800-3)		



ST GEORGE, UTAH
Orig-E 09SEP21

37°02'N-113°31'W

RNAV (GPS) RWY 19

ST GEORGE RGNL (SGU)