

PINE KNOT, KENTUCKY

AL-10461 (FAA)

23054

WAAS CH 70338 W04A	APP CRS 040°	Rwy Idg 2999 TDZE 1371 Apt Elev 1371
--	------------------------	---

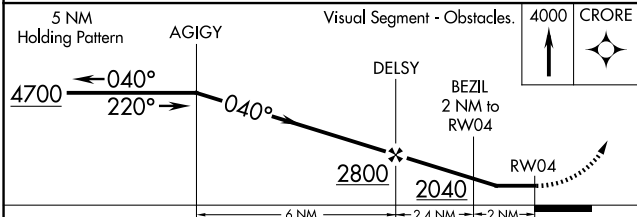
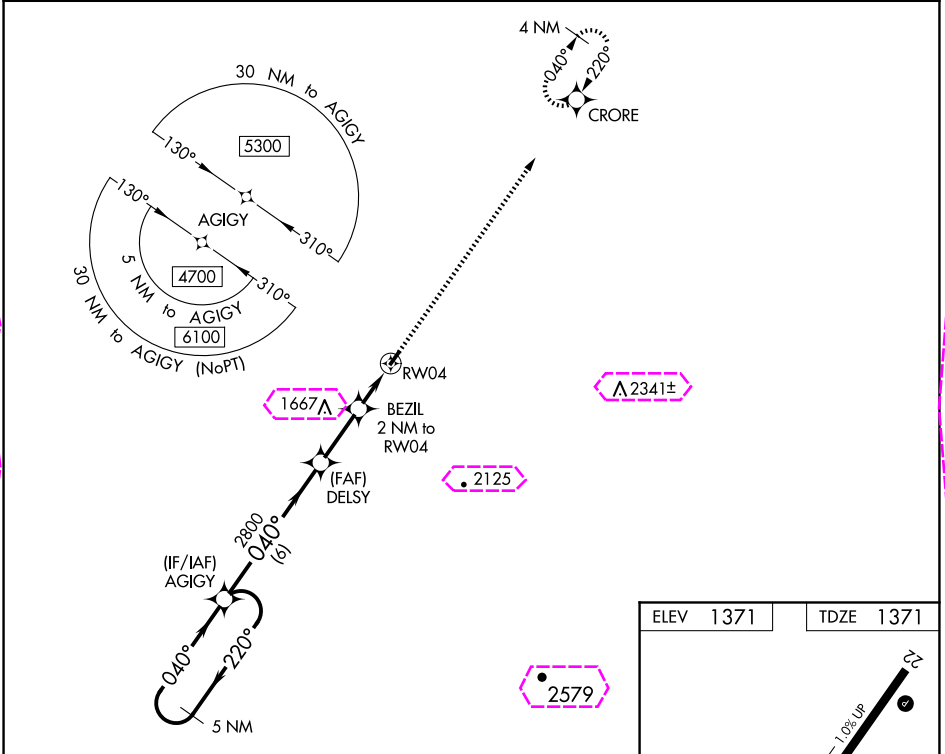
RNAV (GPS) RWY 4

MC CREARY COUNTY (18I)

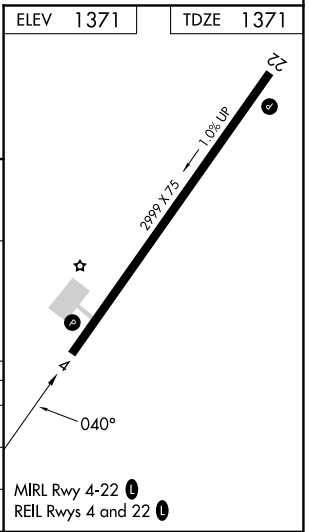
NA DME/DME RNP-0.3 NA. Procedure NA at night. Helicopter visibility reduction below 1 SM NA. Use Williamsburg altimeter setting, when not received use London altimeter setting and increase all MDA 40 feet and increase LP and LNAV Cat C visibility 1/8 mile, increase Circling Cat C visibility 1/4 mile.

MISSED APPROACH: Climb to 4000 direct CRORE and hold.

INDIANAPOLIS CENTER 124.625 371.925	UNICOM 123.05 (CTAF) 0
---	----------------------------------



CATEGORY	A	B	C	D
LP MDA	1920-1	549 (600-1)	1920-1 5/8 549 (600-1 1/8)	NA
LNAV MDA	1940-1	569 (600-1)	1940-1 5/8 569 (600-1 1/8)	NA
CIRCLING	1940-1 569 (600-1)	2000-1 629 (700-1)	2020-1 3/4 649 (700-1 3/4)	NA



PINE KNOT, KENTUCKY
Orig-A 12OCT17

36°41'N-84°23'W

MC CREARY COUNTY (18I)
RNAV (GPS) RWY 4

PINE KNOT, KENTUCKY

AL-10461 (FAA)

25219

WAAS CH 70338 W04A	APP CRS 040°	Rwy Ldg 2999 TDZE 1371 Apt Elev 1371
--	------------------------	---

RNAV (GPS) RWY 4

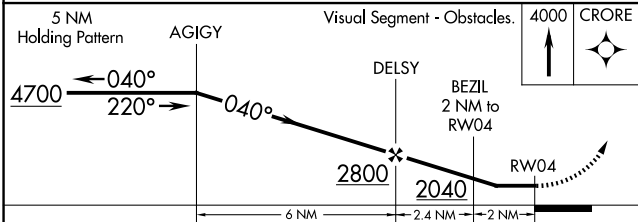
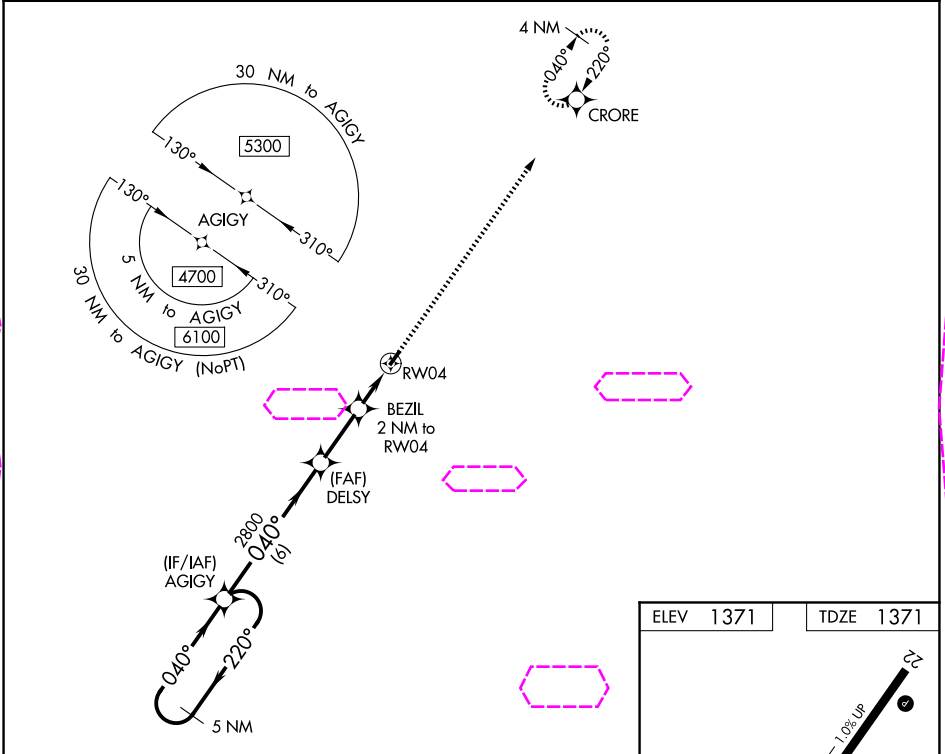
MC CREARY COUNTY (18I)

NA

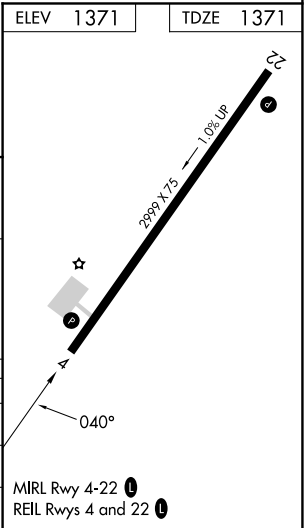
DME/DME RNP-0.3 NA. Procedure NA at night. Helicopter visibility reduction below 1 SM NA. Use Williamsburg altimeter setting, when not received use London altimeter setting and increase all MDA 40 feet and increase LP and LNAV Cat C visibility 1/8 mile, increase Circling Cat C visibility 1/4 mile.

MISSED APPROACH: Climb to 4000 direct CRORE and hold.

INDIANAPOLIS CENTER 124.625 371.925	UNICOM 123.05 (CTAF) 0
---	----------------------------------



CATEGORY	A	B	C	D
LP MDA	1920-1	549 (600-1)	1920-1 5/8 549 (600-1 1/8)	NA
LNAV MDA	1940-1	569 (600-1)	1940-1 5/8 569 (600-1 1/8)	NA
CIRCLING	1940-1 569 (600-1)	2000-1 629 (700-1)	2020-1 3/4 649 (700-1 3/4)	NA



PINE KNOT, KENTUCKY
Orig-A 12OCT17

36°41'N-84°23'W

MC CREARY COUNTY (18I)
RNAV (GPS) RWY 4

SE-1, 07 AUG 2025 to 04 SEP 2025

SE-1, 07 AUG 2025 to 04 SEP 2025