

PINE KNOT, KENTUCKY

AL-10461 (FAA)

23054

WAAS CH <b>81838</b> <b>W22A</b>	APP CRS <b>220°</b>	Rwy Idg TDZE <b>1371</b> Apt Elev <b>1371</b>
--	------------------------	---

# RNAV (GPS) RWY 22

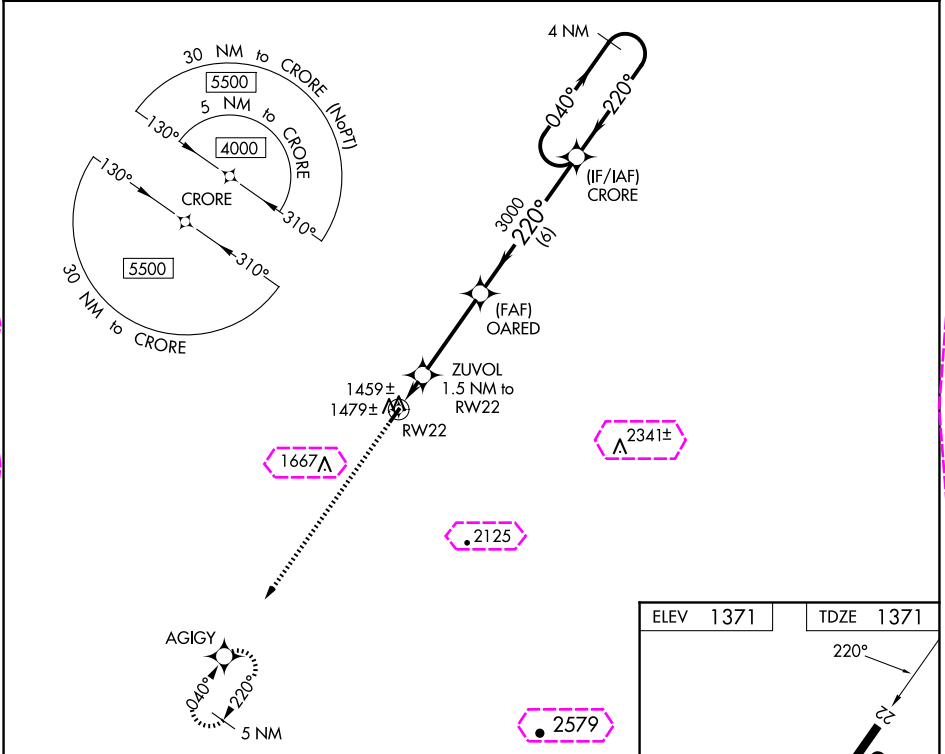
MC CREARY COUNTY (18I)

**NA**

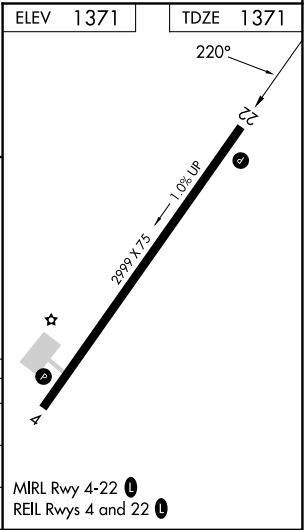
DME/DME RNP-0.3 NA. Procedure NA at night. Helicopter visibility reduction below 1 SM NA. Use Williamsburg altimeter setting, when not received, use London altimeter setting and increase all MDA 40 feet and LP Cat C visibility 1/8 mile and Circling Cat C visibility 1/4 mile.

MISSED APPROACH: Climb to 4700 direct AGIGY and hold, continue climb-in-hold to 4700.

INDIANAPOLIS CENTER <b>124.625 371.925</b>	UNICOM <b>123.05 (CTAF) 0</b>
---	----------------------------------



4700	AGIGY	Visual Segment - Obstacles.	CRORE	4 NM Holding Pattern
↑	✱			
		OARED		
		ZUVOL 1.5 NM to RW22		
		1860	3000	
		1.5 NM	3.6 NM	6 NM
CATEGORY	A	B	C	D
LP MDA	1780-1	409 (500-1)	1780-1 1/4 409 (500-1 1/4)	NA
LNAV MDA	1800-1	429 (500-1)	1800-1 3/8 429 (500-1 3/8)	NA
<b>CIRCLING</b>	1880-1 509 (600-1)	2000-1 629 (700-1)	2020-1 3/4 649 (700-1 3/4)	NA



PINE KNOT, KENTUCKY  
Orig-B 12OCT17

36°41'N-84°23'W

MC CREARY COUNTY (18I)  
**RNAV (GPS) RWY 22**

SE-1, 10 JUL 2025 to 07 AUG 2025

SE-1, 10 JUL 2025 to 07 AUG 2025

PINE KNOT, KENTUCKY

AL-10461 (FAA)

25219

WAAS CH <b>81838</b> <b>W22A</b>	APP CRS <b>220°</b>	Rwy Ldg TDZE <b>1371</b> Apt Elev <b>1371</b>
--	------------------------	---

# RNAV (GPS) RWY 22

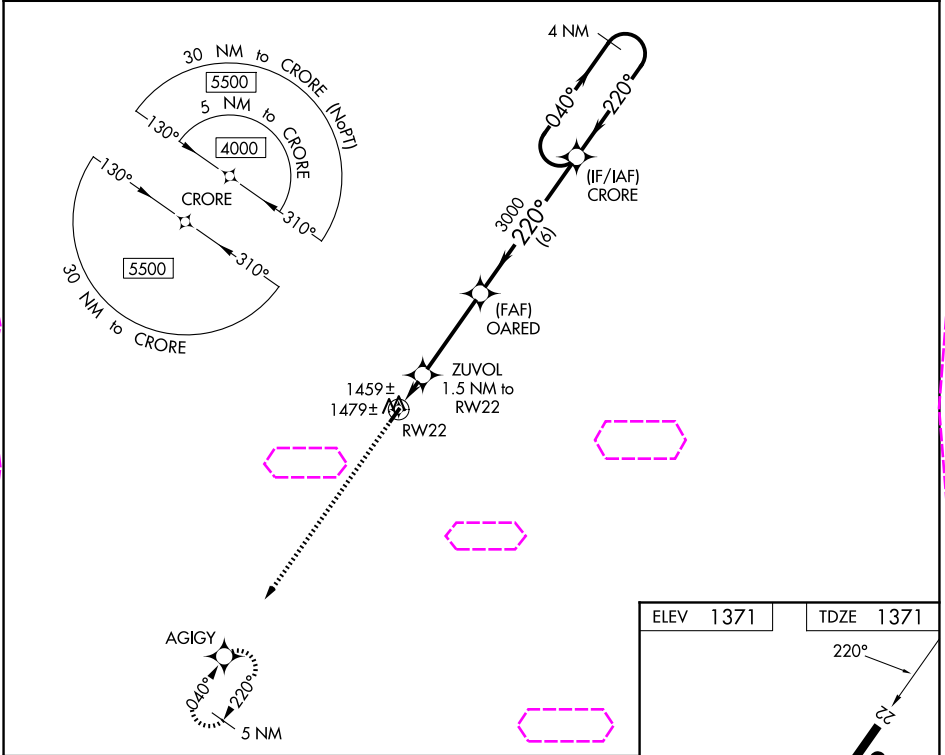
MC CREARY COUNTY (18I)

**NA**

DME/DME RNP-0.3 NA. Procedure NA at night. Helicopter visibility reduction below 1 SM NA. Use Williamsburg altimeter setting, when not received, use London altimeter setting and increase all MDA 40 feet and LP Cat C visibility 1/8 mile and Circling Cat C visibility 1/4 mile.

MISSED APPROACH: Climb to 4700 direct AGIGY and hold, continue climb-in-hold to 4700.

INDIANAPOLIS CENTER <b>124.625 371.925</b>	UNICOM <b>123.05 (CTAF) 0</b>
---	----------------------------------



4700 AGIGY

Visual Segment - Obstacles.

OARED

ZUVOL 1.5 NM to RW22

1860 3000

1.5 NM 3.6 NM 6 NM

CATEGORY	A	B	C	D
LP MDA	1780-1	409 (500-1)	1780-1¼ 409 (500-1¼)	NA
LNAV MDA	1800-1	429 (500-1)	1800-1⅝ 429 (500-1⅝)	NA
CIRCLING	1880-1 509 (600-1)	2000-1 629 (700-1)	2020-1¾ 649 (700-1¾)	NA

ELEV 1371	TDZE 1371
-----------	-----------

MIRL Rwy 4-22 0

REIL Rwy 4 and 22 0