

APP CRS 315°	Rwy Idg TDZE Apt Elev	N/A N/A 422
------------------------	-----------------------------	--

RNAV (GPS)-B
CREWE MUNI (W81)

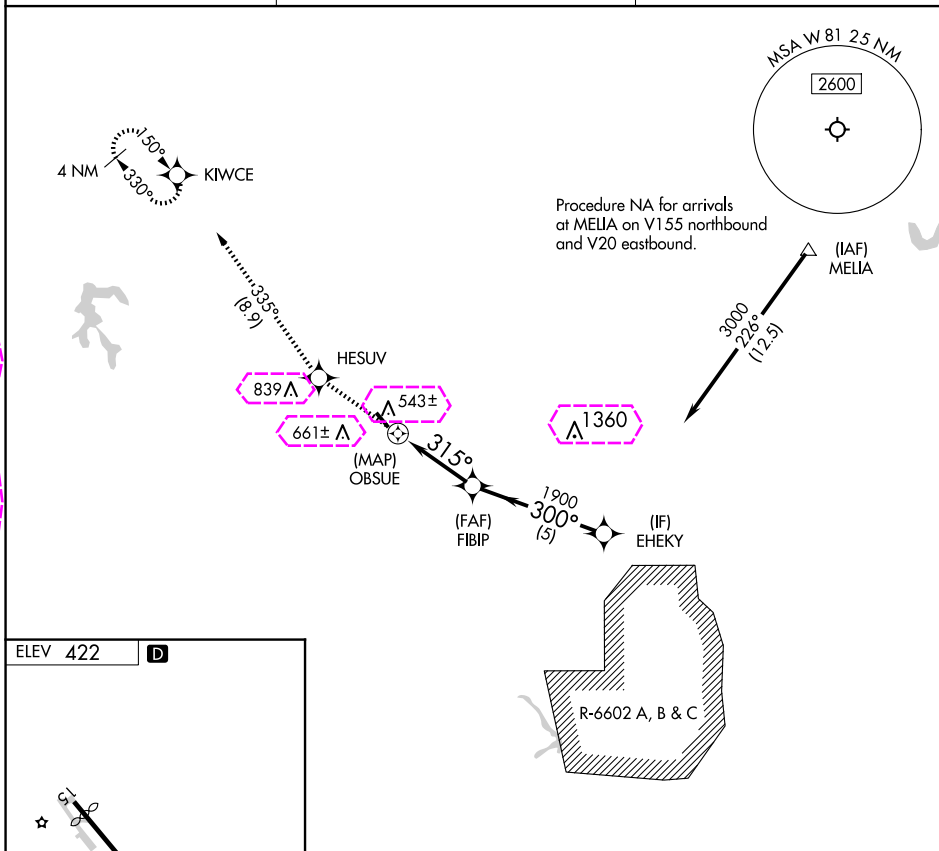
RNP APCH - GPS.

T	Procedure NA at night.
A	Rwy 15 helicopter visibility reduction below 1 SM NA.

MISSED APPROACH: Climb to 3000 direct HESUV and on track 335° to KIWCE and hold.

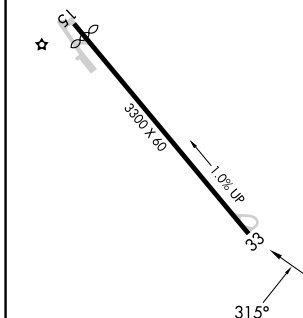
AWOS-3
119.05

WASHINGTON CENTER
118.75 377.1

UNICOM
122.8 (CTAF) **L**

ELEV 422

D



MIRL Rwy 15-33 **L**


CREWE, VIRGINIA
Amdt 1 07OCT21

37°11'N-78°06'W

CREWE MUNI (W81)

RNAV (GPS)-B

3000 ↑	HESUV 	tr 335°	KIWCE 
-----------	--	------------	--

CATEGORY	A	B	C	
 CIRCLING	1420-3	998 (1000-3)		NA

C CIRCLING

1420-3

998 (1000-3)

NA

CREWE, VIRGINIA

AL-10445 (FAA)

25219

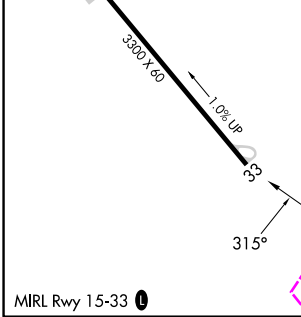
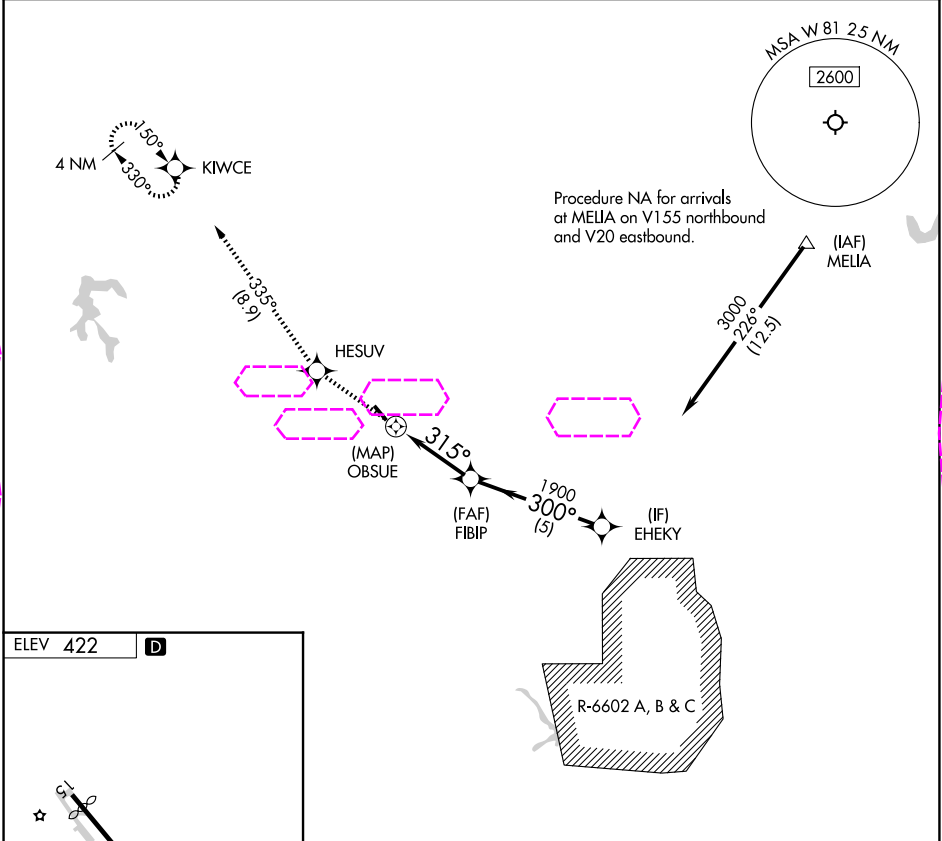
APP CRS	Rwy Ldg	N/A
315°	TDZE	N/A
	Apt Elev	422

RNAV (GPS)-B

CREWE MUNI (W81)

RNP APCH - GPS.	MISSED APPROACH: Climb to 3000 direct HESUV and on track 335° to KIWCCE and hold.
▼ Procedure NA at night. ▲ Rwy 15 helicopter visibility reduction below 1 SM NA.	

AWOS-3 119.05	WASHINGTON CENTER 118.75 377.1	UNICOM 122.8 (CTAF) 0
------------------	-----------------------------------	--------------------------



3000	HESUV	tr 335°	KIWCCE	
			FIBIP	EHEKY
			1900	3000
			315°	300°
			3.3 NM	5 NM
CATEGORY	A	B	C	D
CIRCLING	1420-3	998 (1000-3)	NA	

NE-3, 07 AUG 2025 to 04 SEP 2025

NE-3, 07 AUG 2025 to 04 SEP 2025

CREWE, VIRGINIA
Amdt 1 07OCT21

37°11'N-78°06'W

CREWE MUNI (W81)
RNAV (GPS)-B