

KENBRIDGE, VIRGINIA

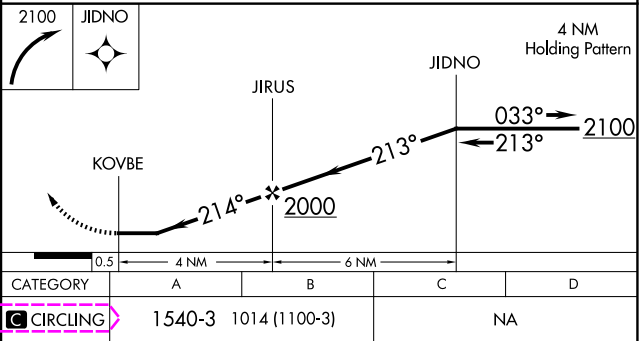
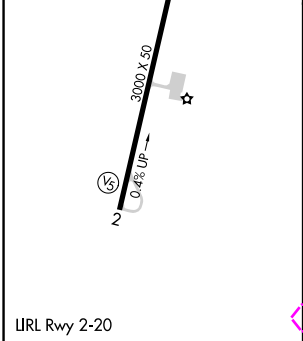
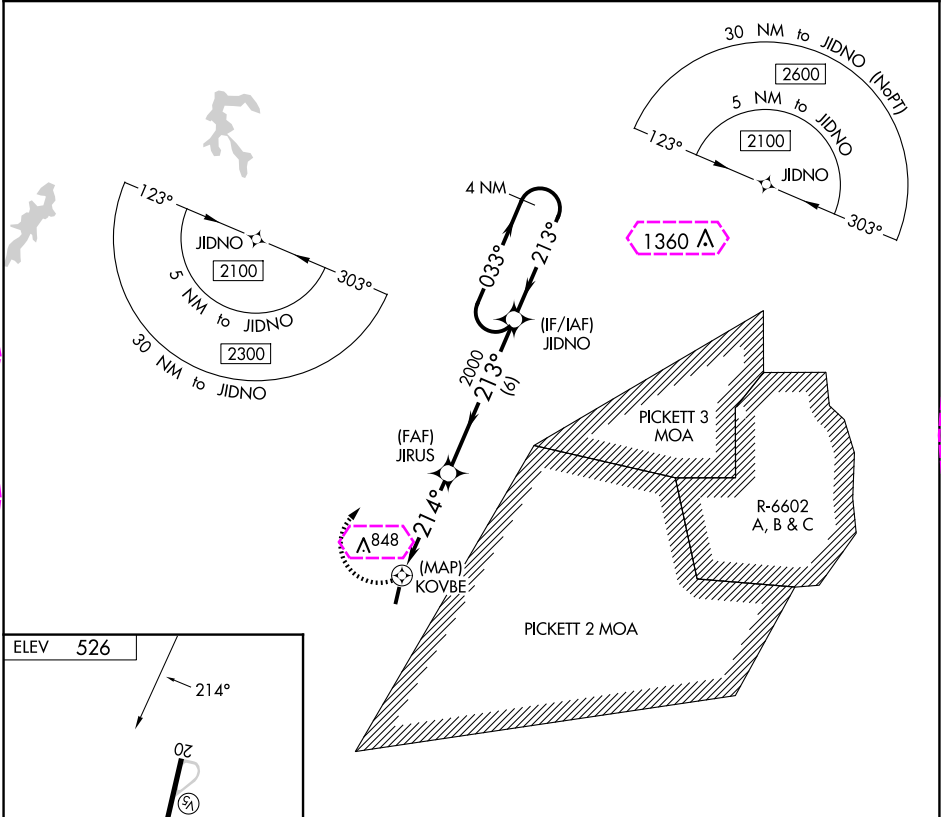
AL-10440 (FAA)

24137

APP CRS	Rwy Idg	N/A
214°	TDZE	N/A
	Apt Elev	526

RNAV (GPS)-B  
LUNENBURG COUNTY (W31)

	Helicopter visibility reduction below 1 SM NA. DME/DME RNP-0.3 NA. Procedure NA at night. When local altimeter setting not received, use Blackstone altimeter setting and increase all MDA 60 feet.	MISSED APPROACH: Climbing right turn to 2100 direct JIDNO and hold.
AWOS-3 123.875	WASHINGTON CENTER 118.75 377.1	UNICOM 122.7 (CTAF)



KENBRIDGE, VIRGINIA  
Orig 02MAR17

36°58'N-78°11'W

LUNENBURG COUNTY (W31)  
RNAV (GPS)-B

NE-3, 10 JUL 2025 to 07 AUG 2025

NE-3, 10 JUL 2025 to 07 AUG 2025

KENBRIDGE, VIRGINIA


AL-10440 (FAA)

25219

APP CRS	Rwy Ldg	N/A
214°	TDZE	N/A
	Apt Elev	526

# RNAV (GPS)-B

LUNENBURG COUNTY (W31)

	Helicopter visibility reduction below 1 SM NA. DME/DME RNP-0.3 NA. Procedure NA at night. When local altimeter setting not received, use Blackstone altimeter setting and increase all MDA 60 feet.		MISSED APPROACH: Climbing right turn to 2100 direct JIDNO and hold.
	AWOS-3 <b>123.875</b>	WASHINGTON CENTER <b>118.75 377.1</b>	UNICOM <b>122.7</b> (CTAF)

