

KENBRIDGE, VIRGINIA

AL-10440 (FAA)

24137

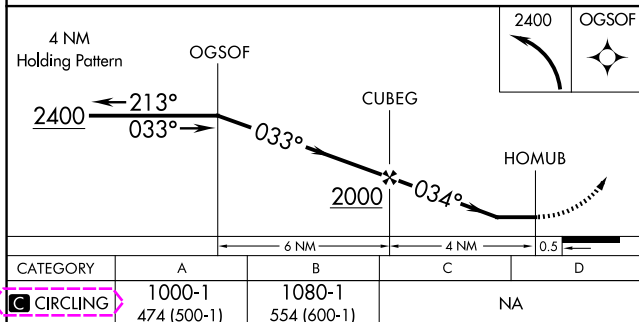
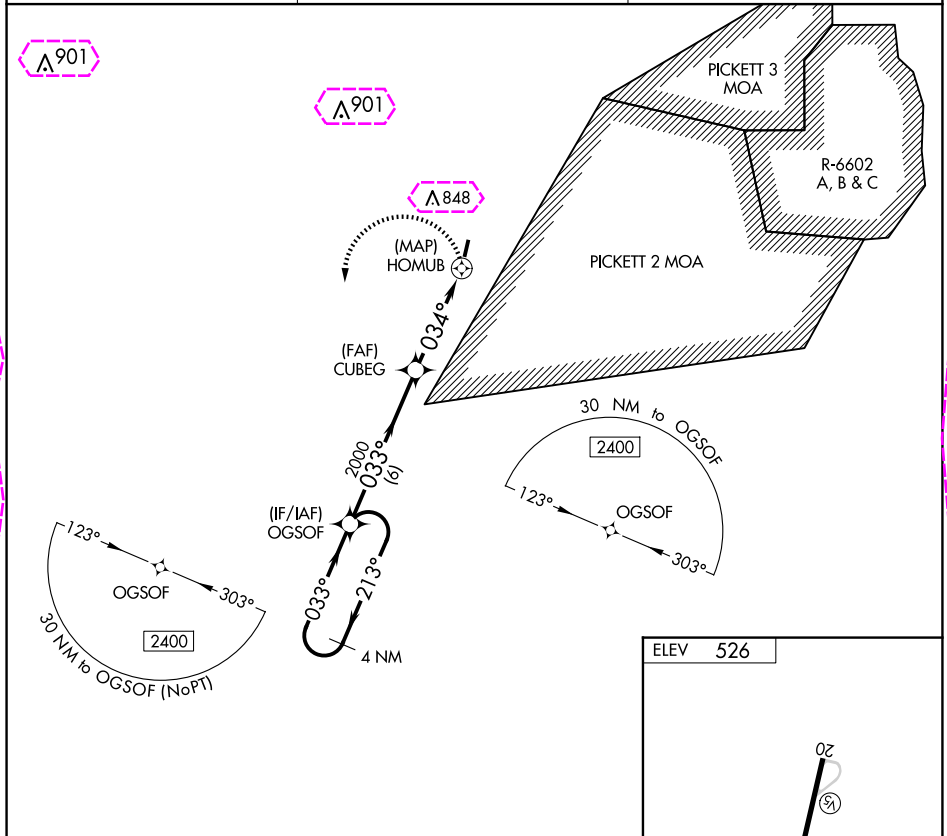
APP CRS	Rwy Idg	N/A
034°	TDZE	N/A
	Apt Elev	526

# RNAV (GPS)-A

LUNENBURG COUNTY (W31)

<p><b>⚠</b> Helicopter visibility reduction below 1 SM NA. DME/DME RNP-0.3 NA. Procedure NA at night. When local altimeter setting not received, use Blackstone altimeter setting and increase all MDA 60 feet.</p>	<p><b>MISSED APPROACH:</b> Climbing left turn to 2400 direct OGSOF and hold.</p>
---	--

AWOS-3 <b>123.875</b>	WASHINGTON CENTER <b>118.75 377.1</b>	UNICOM <b>122.7 (CTAF)</b>
--------------------------	--	-------------------------------



KENBRIDGE, VIRGINIA  
Orig 02MAR17

36°58'N-78°11'W

LUNENBURG COUNTY (W31)  
**RNAV (GPS)-A**

NE-3, 10 JUL 2025 to 07 AUG 2025

NE-3, 10 JUL 2025 to 07 AUG 2025

KENBRIDGE, VIRGINIA

AL-10440 (FAA)

25219

APP CRS	Rwy Ldg	N/A
034°	TDZE	N/A
	Apt Elev	526

**RNAV (GPS)-A**  
LUNENBURG COUNTY (W31)

**⚠** Helicopter visibility reduction below 1 SM NA.  
DME/DME RNP-0.3 NA. Procedure NA at night.  
When local altimeter setting not received, use Blackstone altimeter setting and increase all MDA 60 feet.

**MISSED APPROACH:** Climbing left turn to 2400 direct OGSOF and hold.

AWOS-3 <b>123.875</b>	WASHINGTON CENTER <b>118.75 377.1</b>	UNICOM <b>122.7 (CTAF)</b>
--------------------------	--	-------------------------------

