

HIGHMORE, SOUTH DAKOTA

AL-10432 (FAA)

19283

WAAS CH 72839 W13A	APP CRS 130°	Rwy Idg TDZE 1852 Apt Elev 1854
--	------------------------	---

RNAV (GPS) RWY 13

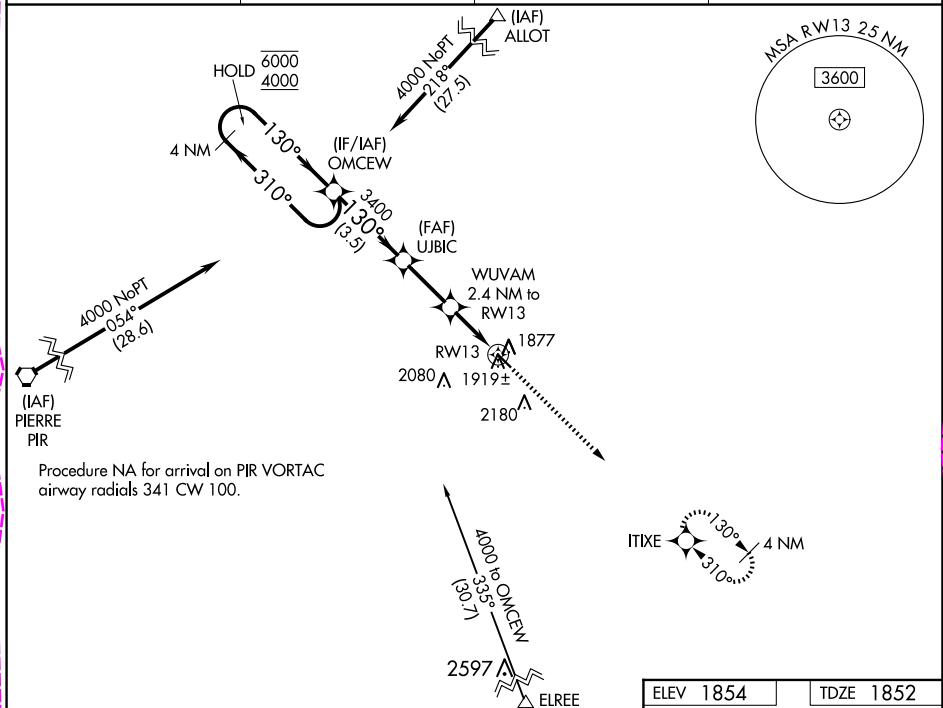
HIGHMORE MUNI (9D#)

RNP APCH.

Baro-VNAV NA. Use Onida altimeter setting; when not received, use Pierre altimeter setting and increase LPV and LNAV/VNAV DA to 2226 and all MDAs 40 feet.

MISSED APPROACH: Climb to 4000 direct ITIXE and hold.

PIR ASOS 119.025	98D AWOS-2 122.9	MINNEAPOLIS CENTER 125.1 269.1	CTAF 122.9
----------------------------	----------------------------	--	----------------------



4 NM

Holding Pattern

OMCEW

UJBIC

WUVAM

2.4 NM to RW13

RW13

6000

4000

← 310°

130° →

130°

3400

*2640

GP 3.00°

TCH 40

3.5 NM

2.4 NM

2.4 NM

4000

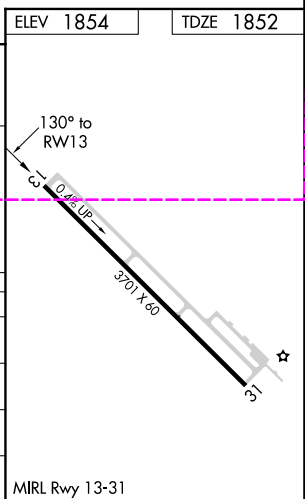
↑

ITIXE

✳

*RNAV only

CATEGORY	A	B	C	D
LPV DA	2192-1½	340 (400-1½)		NA
LNAV/VNAV DA	2192-1½	340 (400-1½)		NA
LNAV MDA	2260-1	408 (500-1)		NA
CIRCLING	2460-1 606 (700-1)	2600-1 746 (800-1)		NA



HIGHMORE, SOUTH DAKOTA
Orig-A 10OCT19

44°32'N-99°27'W

RNAV (GPS) RWY 13

HIGHMORE MUNI (9D#)

NC-1, 10 JUL 2025 to 07 AUG 2025

NC-1, 10 JUL 2025 to 07 AUG 2025

HIGHMORE, SOUTH DAKOTA

AL-10432 (FAA)

25219

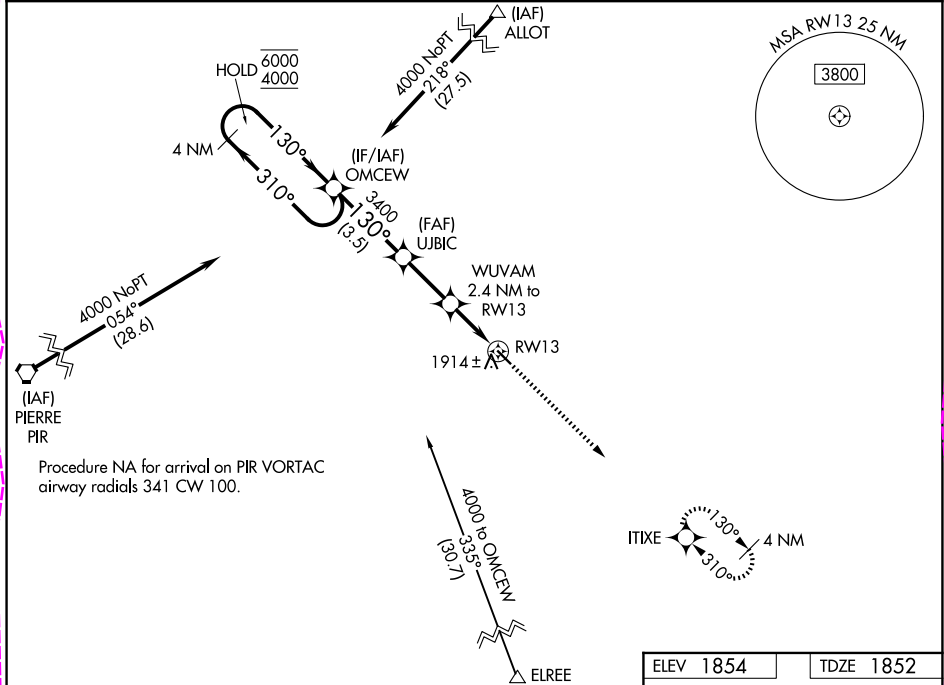
WAAS CH 72839 W13A	APP CRS 130°	Rwy Ldg TDZE Apt Elev 3701 1852 1854
--	------------------------	--

RNAV (GPS) RWY 13

HIGHMORE MUNI (9D~~0~~)

RNP APCH - GPS.	MISSED APPROACH: Climb to 4000 direct ITIXE and hold.
Baro-VNAV NA. Use 98D altimeter setting; when not received, use PIR altimeter setting and increase LPV DA to 2226 feet. Increase LNAV/VNAV DA to 2226 feet. Increase all MDAs 40 feet.	

98D AWOS-2 122.9	MINNEAPOLIS CENTER 125.1 269.1	CTAF 122.9
----------------------------	--	----------------------



4 NM Holding Pattern		OMCEW	UJBIC	WUVAM	ITIXE
6000 ← 310°		3400	3400	2.4 NM to RWY13	↑ 4000
4000 → 130°		3400	2640	2.4 NM to RWY13	✧
GP 3.00°		3.5 NM	2.4 NM	2.4 NM	
TCH 40					
CATEGORY	A	B	C	D	
LPV DA	2192-1	340 (400-1)		NA	
LNAV/VNAV DA	2192-1	340 (400-1)		NA	
LNAV MDA	2260-1	408 (500-1)		NA	
CIRCLING	2460-1 606 (700-1)	2600-1 746 (800-1)		NA	

HIGHMORE, SOUTH DAKOTA
Orig-B 07AUG25

44°32'N-99°27'W

RNAV (GPS) RWY 13

HIGHMORE MUNI (9D~~0~~)