

QUITMAN, GEORGIA

AL-10427 (FAA)

24249

WAAS CH 42734 W10A	APP CRS 099°	Rwy Idg 5000 TDZE 182 Apt Elev 185
--	------------------------	---

RNAV (GPS) RWY 10

QUITMAN BROOKS COUNTY (4J5)

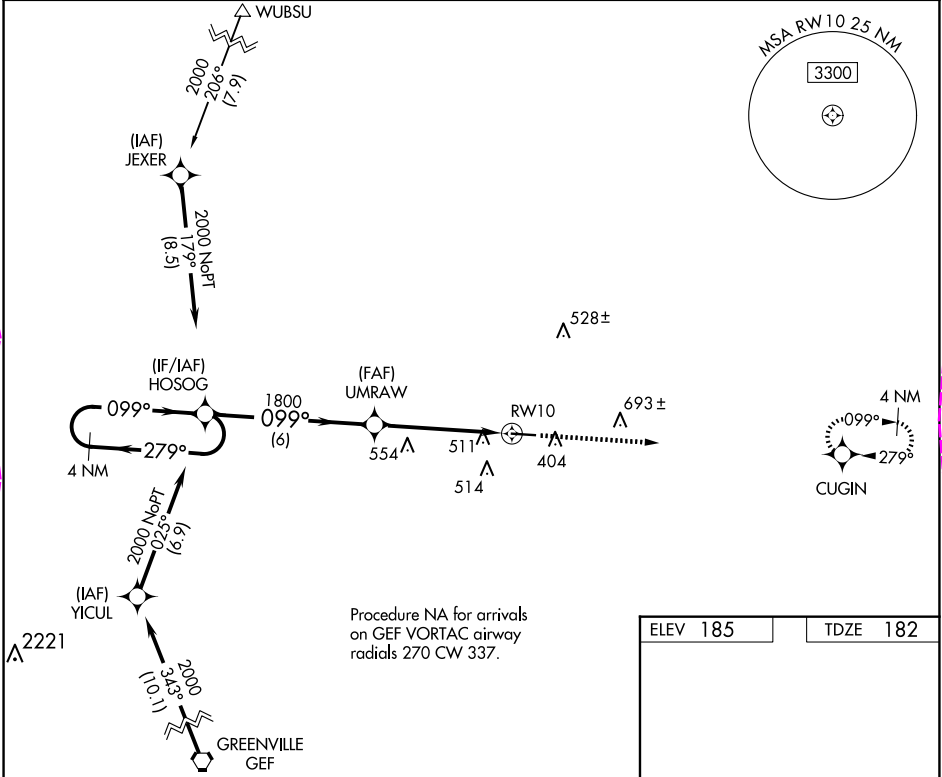
RNP APCH.

Procedure NA at night. Rwy 10 helicopter visibility reduction below 1 SM NA.

Use Valdosta altimeter setting; when not received, use Thomasville altimeter setting and increase all MDA 20 feet; increase LP Cat C visibility 1/8 SM.

MISSED APPROACH: Climb to 2000 direct CUGIN and hold.

VALDOSTA APP CON★ 126.6	CTAF 122.9 0
-----------------------------------	------------------------



4 NM Holding Pattern

Visual Segment - Obstacles.

2000 CUGIN

HOSOG

UMRAW

RW10

2000 279° 099° 099° 1800

6 NM 4.9 NM

CATEGORY	A	B	C	D
LP MDA	740-1	558 (600-1)	740-1 5/8 558 (600-1 5/8)	NA
LNAV MDA	820-1	638 (700-1)	820-1 7/8 638 (700-1 7/8)	NA

MIRL Rwy 10-28 0

SE-4, 10 JUL 2025 to 07 AUG 2025

SE-4, 10 JUL 2025 to 07 AUG 2025

QUITMAN, GEORGIA

AL-10427 (FAA)

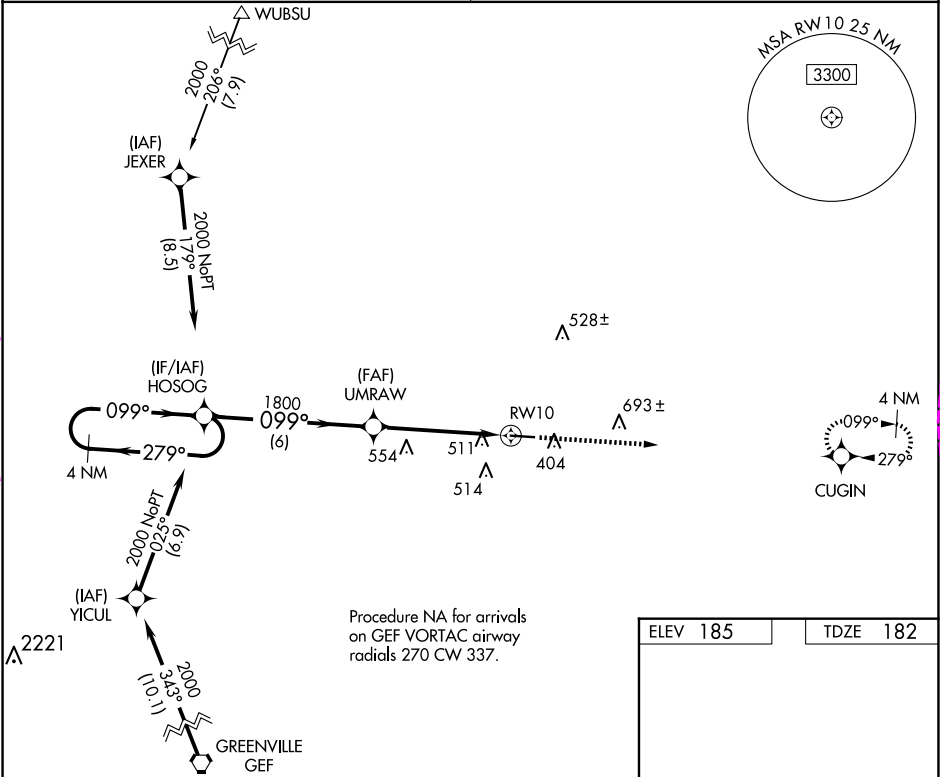
25219

WAAS CH 42734 W10A	APP CRS 099°	Rwy Ldg TDZE Apt Elev	4308 182 185
--	------------------------	-----------------------------	---

RNAV (GPS) RWY 10
QUITMAN BROOKS COUNTY (4J5)

RNP APCH.	Procedure NA at night. Rwy 10 helicopter visibility reduction below 1 SM NA. Use Valdosta altimeter setting; when not received, use Thomasville altimeter setting and increase all MDA 20 feet; increase LP Cat C visibility 1/8 SM.	MISSED APPROACH: Climb to 2000 direct CUGIN and hold.
-----------	---	---

VALDOSTA APP CON★ 126.6	CTAF 122.9 0
-----------------------------------	------------------------



4 NM Holding Pattern		Visual Segment - Obstacles.		2000	CUGIN
6 NM		4.9 NM		MIRL Rwy 10-28	
CATEGORY	A	B	C	D	
LP MDA	740-1	558 (600-1)	740-1 5/8 558 (600-1 5/8)	NA	
LNAV MDA	820-1	638 (700-1)	820-1 7/8 638 (700-1 7/8)	NA	

QUITMAN, GEORGIA
Amdt 1C 18JUL19

30°48'N-83°35'W

QUITMAN BROOKS COUNTY (4J5)
RNAV (GPS) RWY 10

SE-4, 07 AUG 2025 to 04 SEP 2025

SE-4, 07 AUG 2025 to 04 SEP 2025