

STOCKTON, KANSAS

AL-10417 (FAA)

22307

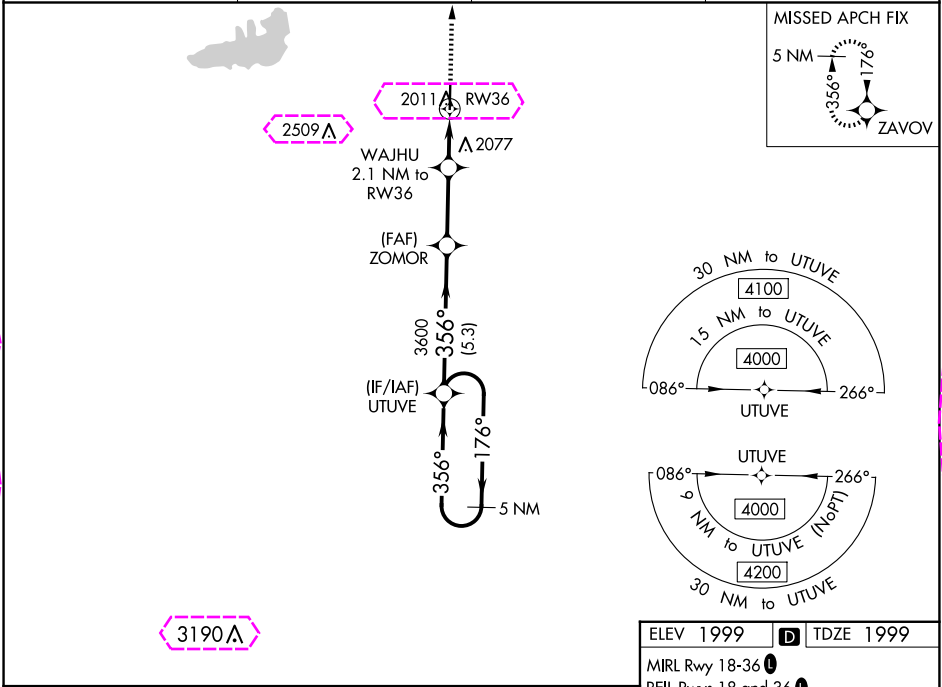
WAAS CH 40232 W36A	APP CRS 356°	Rwy Idg TDZE 1999 Apt Elev 1999
--	------------------------	---

RNAV (GPS) RWY 36

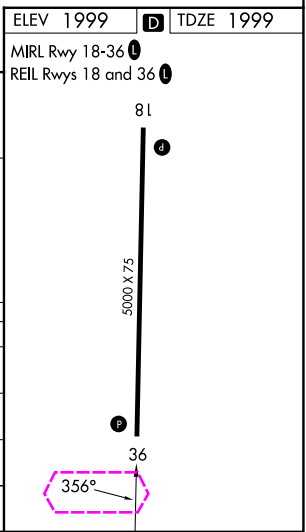
ROOKS COUNTY RGNL (RCP)

NA Baro-VNAV NA. Use Hill City altimeter setting; when not received, use Hays Rgnl altimeter setting. Circling NA west of Rwy 18-36. DME/DME RNP-0.3 NA.	MISSED APPROACH: Climb to 6000 direct ZAVOV and hold, continue climb-in-hold to 6000.
---	---

AWOS-AV 120.075	HLC ASOS 118.425	DENVER CENTER 132.7 226.675	CTAF 122.9
----------------------------------	----------------------------	---------------------------------------	----------------------



5 NM Holding Pattern		UTUTE	ZOMOR	6000	ZAVOV
4000		176°	356°	3600	356°
GP 3.00°		TCH 40	3600	WAJHU 2.1 NM to RW36	*LNAV only.
			5.3 NM	2.8 NM	2.1 NM
CATEGORY	A	B	C	D	
LPV DA	2290-1 291 (300-1)				NA
LNAV/VNAV DA	2340-1½ 341 (400-1½)				NA
LNAV MDA	2420-1 421 (500-1)		2420-1¼ 421 (500-1¼)		NA
CIRCLING	2460-1 461 (500-1)	2480-1 481 (500-1)	2500-1½ 501 (600-1½)	NA	



STOCKTON, KANSAS
Orig-B 24JUL14

39°21'N-99°18'W

ROOKS COUNTY RGNL (RCP)

RNAV (GPS) RWY 36

STOCKTON, KANSAS

AL-10417 (FAA)

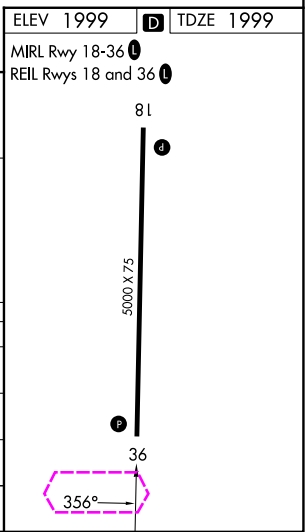
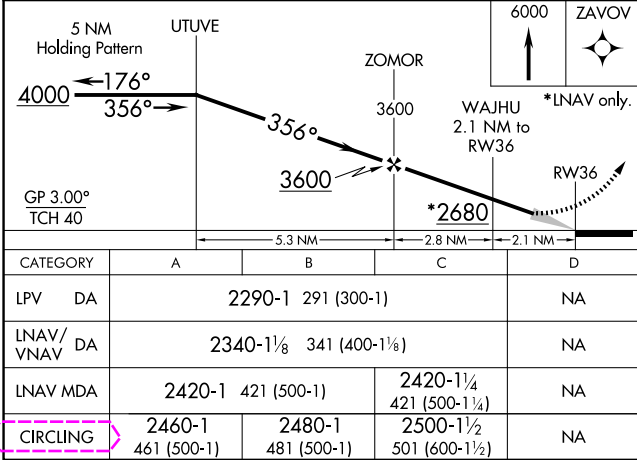
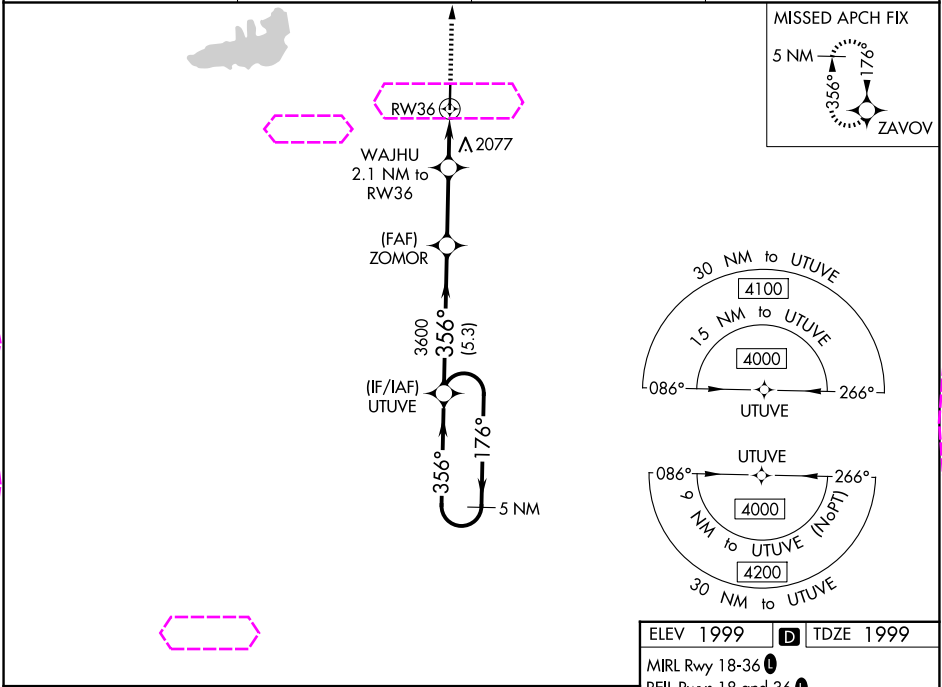
25219

WAAS CH 40232 W36A	APP CRS 356°	Rwy Ldg TDZE 1999 Apt Elev 1999
--	------------------------	---

RNAV (GPS) RWY 36
ROOKS COUNTY RGNL (RCP)

NA Baro-VNAV NA. Use Hill City alimeter setting; when not received, use Hays Rgnl alimeter setting. Circling NA west of Rwy 18-36. DME/DME RNP-0.3 NA.	MISSED APPROACH: Climb to 6000 direct ZAVOV and hold, continue climb-in-hold to 6000.
---	---

AWOS-3PT 120,075	HLC ASOS 118,425	DENVER CENTER 132.7 226,675	CTAF 122.9
-----------------------------------	----------------------------	---------------------------------------	----------------------



NC-2, 07 AUG 2025 to 04 SEP 2025

NC-2, 07 AUG 2025 to 04 SEP 2025