

STOCKTON, KANSAS

AL-10417 (FAA)

22307

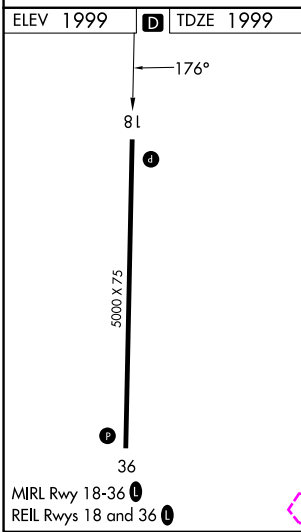
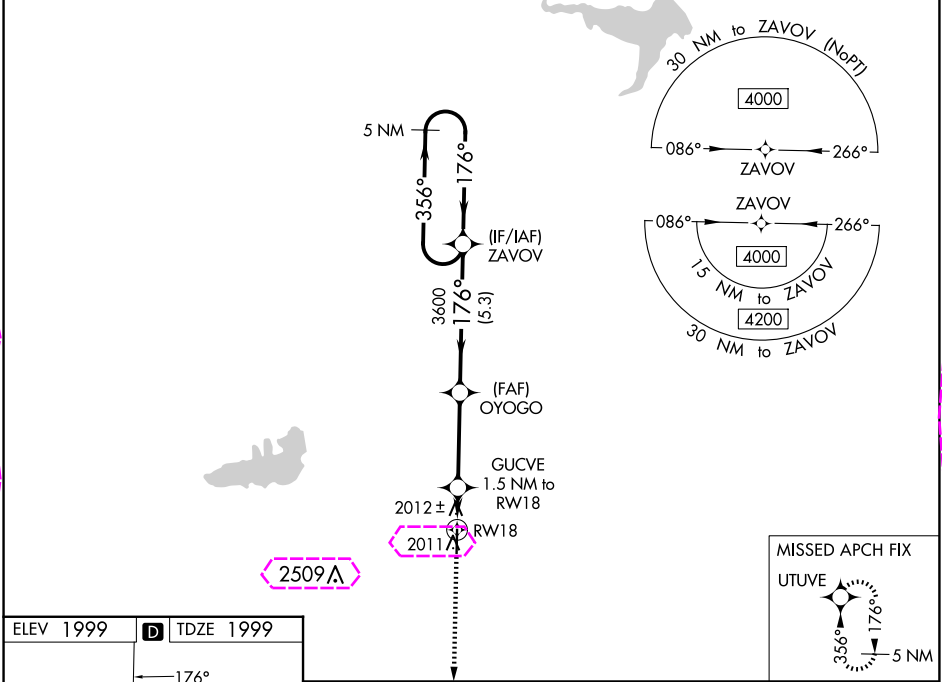
WAAS CH 82432 W18A	APP CRS 176°	Rwy Idg TDZE 1999 Apt Elev 1999
--	------------------------	---

RNAV (GPS) RWY 18

ROOKS COUNTY RGNL (RCP)

NA Baro-VNAV NA. Use Hill City altimeter setting; when not received, use Hays altimeter setting. Circling NA west of Rwy 18-36. DME/DME RNP-0.3 NA.	MISSED APPROACH: Climb to 6000 direct UTUVE and hold, continue climb-in-hold to 6000.
---	---

AWOS-AV 120,075	HLC ASOS 118,425	DENVER CENTER 132.7 226.675	CTAF 122.9
----------------------------------	----------------------------	---------------------------------------	----------------------



6000	UTUVE	OYOGO	ZAVOV	5 NM Holding Pattern
*LNAV only.	GUCVE 1.5 NM to RWY 18	3600	176°	356° → 4000
RWY 18	2500*	3600	← 176°	GP 3.00° TCH 40
1.5 NM	3.4 NM	5.3 NM		
CATEGORY	A	B	C	D
LPV DA	2290-1	291 (300-1)		NA
LNAV/VNAV DA	2340-1½	341 (400-1½)		NA
LNAV MDA	2360-1	361 (400-1)		NA
CIRCLING	2460-1 461 (500-1)	2480-1 481 (500-1)	2500-1½ 501 (600-1½)	NA

STOCKTON, KANSAS
Orig-B 24JUL14

39°21'N-99°18'W

RNAV (GPS) RWY 18

ROOKS COUNTY RGNL (RCP)

NC-2, 10 JUL 2025 to 07 AUG 2025

NC-2, 10 JUL 2025 to 07 AUG 2025

STOCKTON, KANSAS

AL-10417 (FAA)

25219

WAAS CH 82432 W18A	APP CRS 176°	Rwy Ldg TDZE 1999 Apt Elev 1999
--	------------------------	---

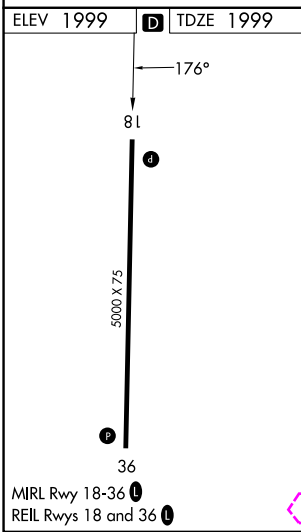
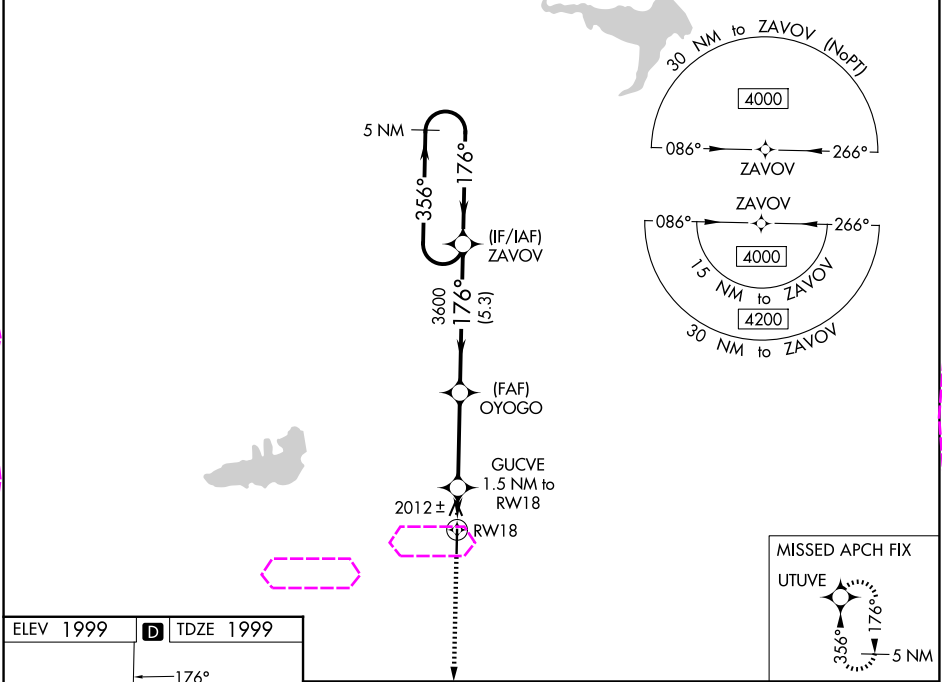
RNAV (GPS) RWY 18

ROOKS COUNTY RGNL (RCP)

NA Baro-VNAV NA. Use Hill City altimeter setting; when not received, use Hays altimeter setting. Circling NA west of Rwy 18-36.
DME/DME RNP-0.3 NA.

MISSED APPROACH: Climb to 6000 direct UTUVE and hold, continue climb-in-hold to 6000.

AWOS-3PT 120,075	HLC ASOS 118,425	DENVER CENTER 132.7 226.675	CTAF 122.9
----------------------------	----------------------------	---------------------------------------	----------------------



6000	UTUVE	OYOGO	ZAVOV	5 NM Holding Pattern
*LNAV only.	GUCVE 1.5 NM to RW18	3600	176°	356° → 4000
RW18	2500*	3600	← 176°	
1.5 NM	3.4 NM	5.3 NM		GP 3.00° TCH 40
CATEGORY	A	B	C	D
LPV DA	2290-1	291 (300-1)		NA
LNAV/VNAV DA	2340-1½	341 (400-1½)		NA
LNAV MDA	2360-1	361 (400-1)		NA
CIRCLING	2460-1 461 (500-1)	2480-1 481 (500-1)	2500-1½ 501 (600-1½)	NA

STOCKTON, KANSAS
Orig-B 24JUL14

39°21'N-99°18'W

RNAV (GPS) RWY 18

ROOKS COUNTY RGNL (RCP)

NC-2, 07 AUG 2025 to 04 SEP 2025

NC-2, 07 AUG 2025 to 04 SEP 2025