

HART/SHELBY, MICHIGAN

AL-10401 (FAA)

23054

APP CRS	Rwy Idg	3500
088°	TDZE	916
	Apt Elev	916

RNAV (GPS) RWY 9

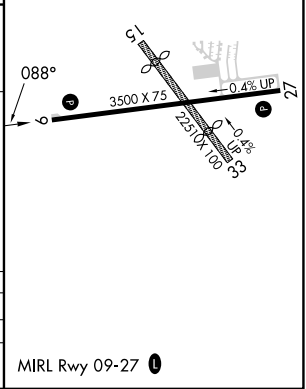
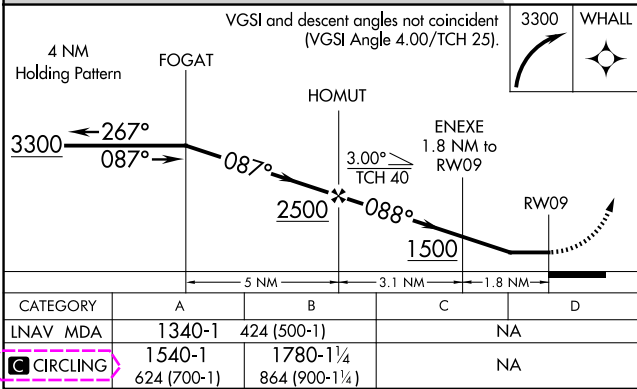
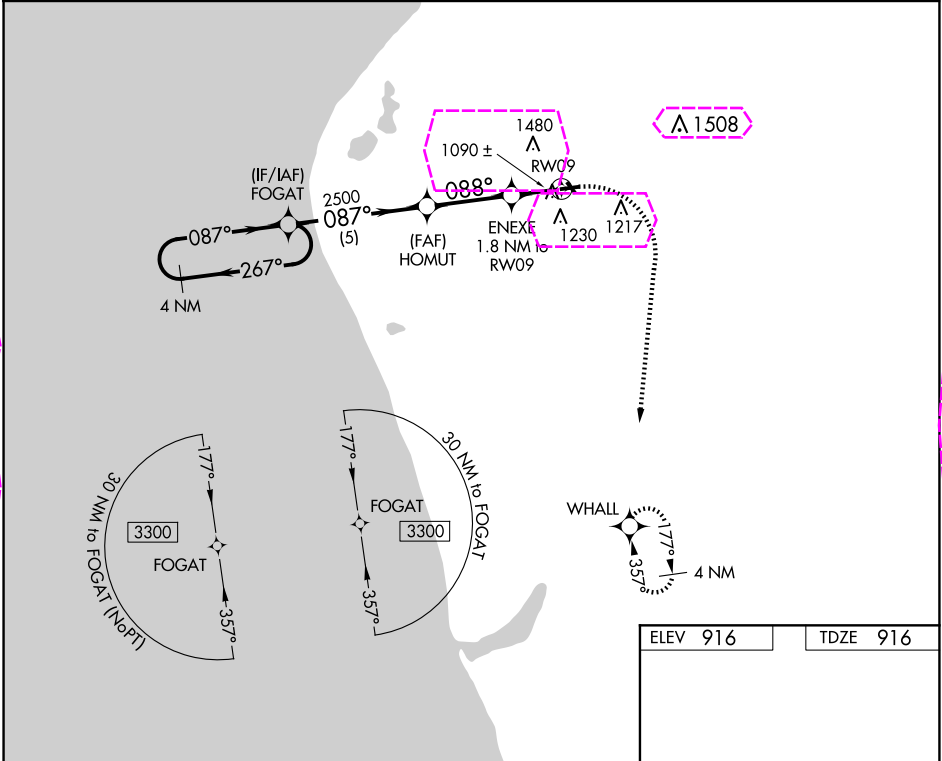
OCEANA COUNTY (C04)

⚠ NA

When local altimeter setting not received, use Fremont altimeter setting and increase all MDAs 80 feet. DME/DME RNP-0.3 NA. Procedure NA at night. Helicopter visibility reduction below 1 SM NA. Circling NA to Rwy's 15 and 33.

MISSED APPROACH:
Climbing right turn to 3300 direct WHALL and hold.

AWOS-AV 122.7	GREAT LAKES APP CON* 119.8 290.35	UNICOM 122.7 (CTAF)
-------------------------	---	-------------------------------



CATEGORY	A	B	C	D
LNAV MDA	1340-1	424 (500-1)	NA	NA
CIRCLING	1540-1 624 (700-1)	1780-1¼ 864 (900-1¼)	NA	NA

HART/SHELBY, MICHIGAN
Orig 10DEC15

43°38'N-86°20'W

OCEANA COUNTY (C04)
RNAV (GPS) RWY 9

EC-1, 10 JUL 2025 to 07 AUG 2025

EC-1, 10 JUL 2025 to 07 AUG 2025

HART/SHELBY, MICHIGAN

AL-10401 (FAA)

25219

APP CRS	Rwy Ldg	3500
088°	TDZE	916
	Apt Elev	916

RNAV (GPS) RWY 9

OCEANA COUNTY (C04)

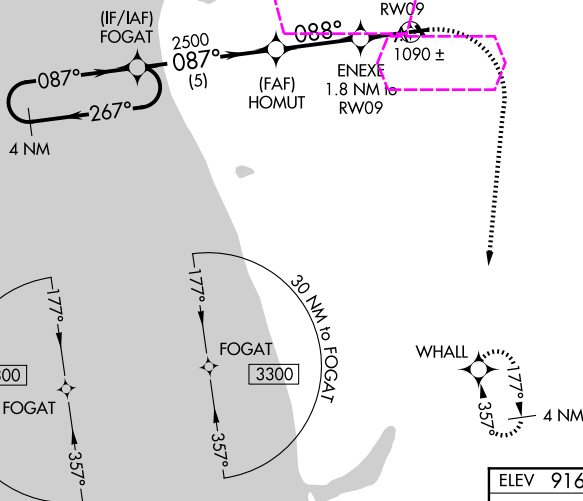
⚠ NA When local altimeter setting not received, use Fremont altimeter setting and increase all MDAs 80 feet. DME/DME RNP-0.3 NA. Procedure NA at night. Helicopter visibility reduction below 1 SM NA. Circling NA to Rwy 15 and 33.

MISSED APPROACH:
Climbing right turn to 3300
direct WHALL and hold.

AWOS-AV
122.7

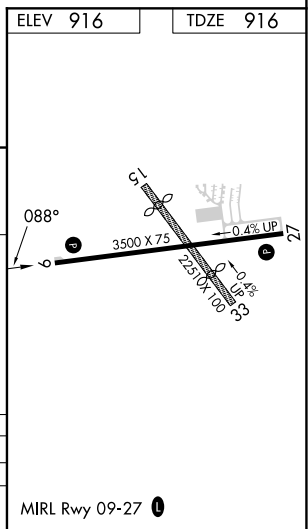
GREAT LAKES APP CON*
119.8 290.35

UNICOM
122.7 (CTAF) 0



EC-1, 07 AUG 2025 to 04 SEP 2025

EC-1, 07 AUG 2025 to 04 SEP 2025



VGS1 and descent angles not coincident (VGS1 Angle 4.00/TCH 25).				
4 NM Holding Pattern				
3300 ← 267° 087° → 087° 088° 2500 1500 RW09				
FOGAT HOMUT ENEXE 1.8 NM to RW09				
3.00 TCH 40				
5 NM 3.1 NM 1.8 NM				
CATEGORY	A	B	C	D
LNAV MDA	1340-1	424 (500-1)	NA	
CIRCLING	1540-1 624 (700-1)	1780-1¼ 864 (900-1¼)	NA	

HART/SHELBY, MICHIGAN
Orig 10DEC15

43°38'N-86°20'W

OCEANA COUNTY (C04)
RNAV (GPS) RWY 9