

HART/SHELBY, MICHIGAN

AL-10401 (FAA)

23054

WAAS CH 97637 W27A	APP CRS 268°	Rwy Idg 3500 TDZE 912 Apt Elev 916
--	------------------------	---

RNAV (GPS) RWY 27

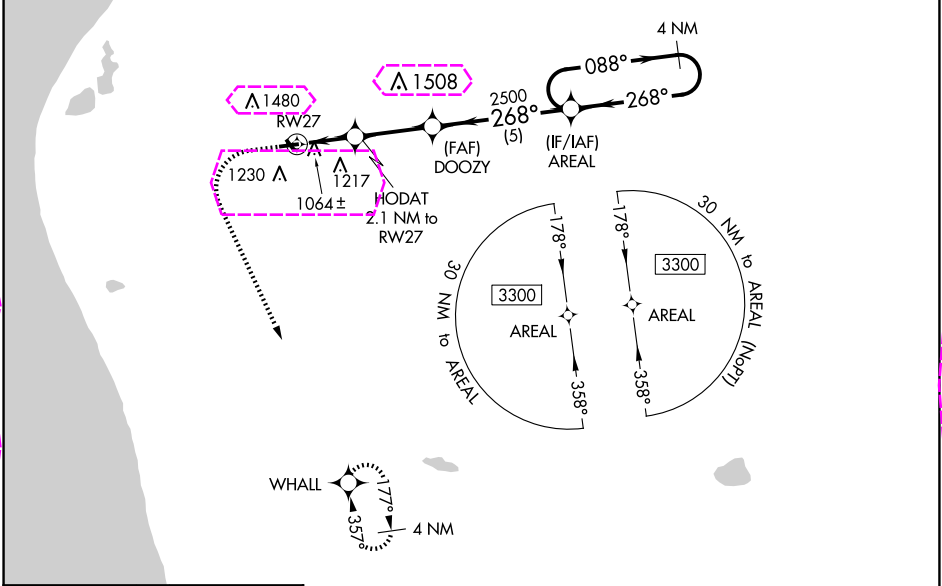
OCEANA COUNTY (C04)

NA

Baro-VNAV NA when using Fremont altimeter setting. For uncompensated Baro-VNAV systems, LNAV/VNAV NA below -16°C (4°F) or above 54°C (130°F). When local altimeter setting not received, use Fremont altimeter setting and increase all DA 64 feet, all MDA 80 feet, and LPV and LNAV/VNAV visibility all Cats ¼ mile. DME/DME RNP-0.3 NA. Procedure NA at night. Helicopter visibility reduction below 1 SM NA. Circling NA to Rwy 15 and 33.

MISSED APPROACH:
Climb to 1500 then climbing left turn to 3300 direct WHALL and hold.

AWOS-AV 122.7	GREAT LAKES APP CON* 119.8 290.35	UNICOM 122.7 (CTAF) 0
-------------------------	---	---------------------------------



ELEV 916	TDZE 912
-----------------	-----------------

1500 **3300** **WHALL**

VGSI angle and RNAV glidepath not coincident (VGSI Angle 4.00/TCH 25).

***LNAV only**

DOOZY 2500

HODAT 2.1 NM to RWY 27

RWY 27

AREAL 4 NM Holding Pattern

GP 3.00° TCH 40

***1600**

2.1 NM **2.8 NM** **5 NM**

CATEGORY	A	B	C	D
LPV DA	1254-1 1/8	342 (400-1 1/8)		NA
LNAV/VNAV DA	1236-1 1/8	324 (400-1 1/8)		NA
LNAV MDA	1340-1	428 (500-1)		NA
CIRCLING	1540-1 624 (700-1)	1780-1 1/4 864 (900-1 1/4)		NA

HART/SHELBY, MICHIGAN
Orig 10DEC15

43°38'N-86°20'W

RNAV (GPS) RWY 27

OCEANA COUNTY (C04)

EC-1, 10 JUL 2025 to 07 AUG 2025

EC-1, 10 JUL 2025 to 07 AUG 2025

HART/SHELBY, MICHIGAN

AL-10401 (FAA)

25219

WAAS CH 97637 W27A	APP CRS 268°	Rwy Ldg TDZE 912 Apt Elev 916
--	------------------------	---

RNAV (GPS) RWY 27

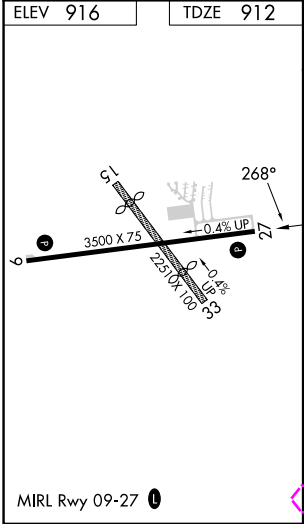
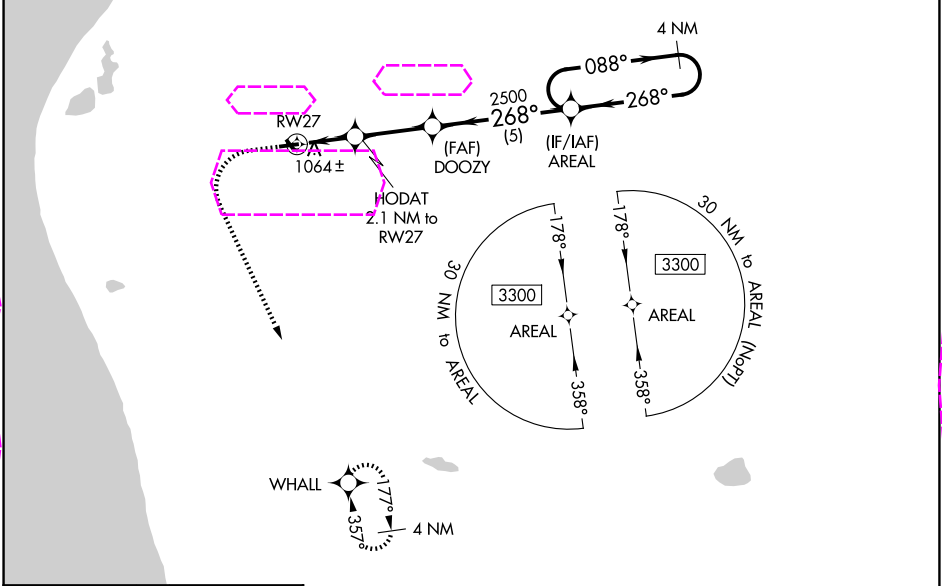
OCEANA COUNTY (C04)

NA

Baro-VNAV NA when using Fremont altimeter setting. For uncompensated Baro-VNAV systems, LNAV/VNAV NA below -16°C (4°F) or above 54°C (130°F). When local altimeter setting not received, use Fremont altimeter setting and increase all DA 64 feet, all MDA 80 feet, and LPV and LNAV/VNAV visibility all Cats ¼ mile. DME/DME RNP-0.3 NA. Procedure NA at night. Helicopter visibility reduction below 1 SM NA. Circling NA to Rwy 15 and 33.

MISSED APPROACH:
Climb to 1500 then climbing left turn to 3300 direct WHALL and hold.

AWOS-AV 122.7	GREAT LAKES APP CON* 119.8 290.35	UNICOM 122.7 (CTAF) 0
-------------------------	---	---------------------------------



1500	3300	WHALL	VGSI angle and RNAV glidepath not coincident (VGSI Angle 4.00/TCH 25).
*LNAV only	DOOZY	HODAT	AREAL
RW27	2500	2.1 NM to RW27	4 NM Holding Pattern
2.1 NM	2.8 NM	5 NM	GP 3.00° TCH 40
CATEGORY	A	B	C
LPV DA	1254-1 1/8	342 (400-1 1/8)	NA
LNAV/VNAV DA	1236-1 1/8	324 (400-1 1/8)	NA
LNAV MDA	1340-1	428 (500-1)	NA
CIRCLING	1540-1	1780-1 1/4	NA
	624 (700-1)	864 (900-1 1/4)	

HART/SHELBY, MICHIGAN
Orig 10DEC15

43°38'N-86°20'W

RNAV (GPS) RWY 27

OCEANA COUNTY (C04)

EC-1, 07 AUG 2025 to 04 SEP 2025

EC-1, 07 AUG 2025 to 04 SEP 2025