

LEWISPORT, KENTUCKY

AL-10388 (FAA)

22195

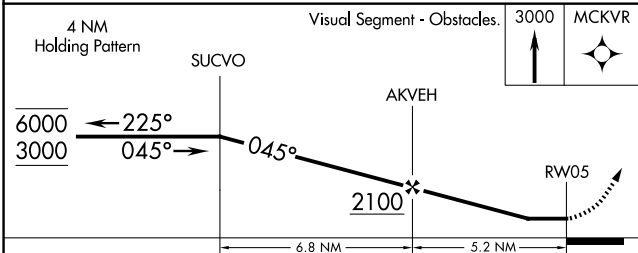
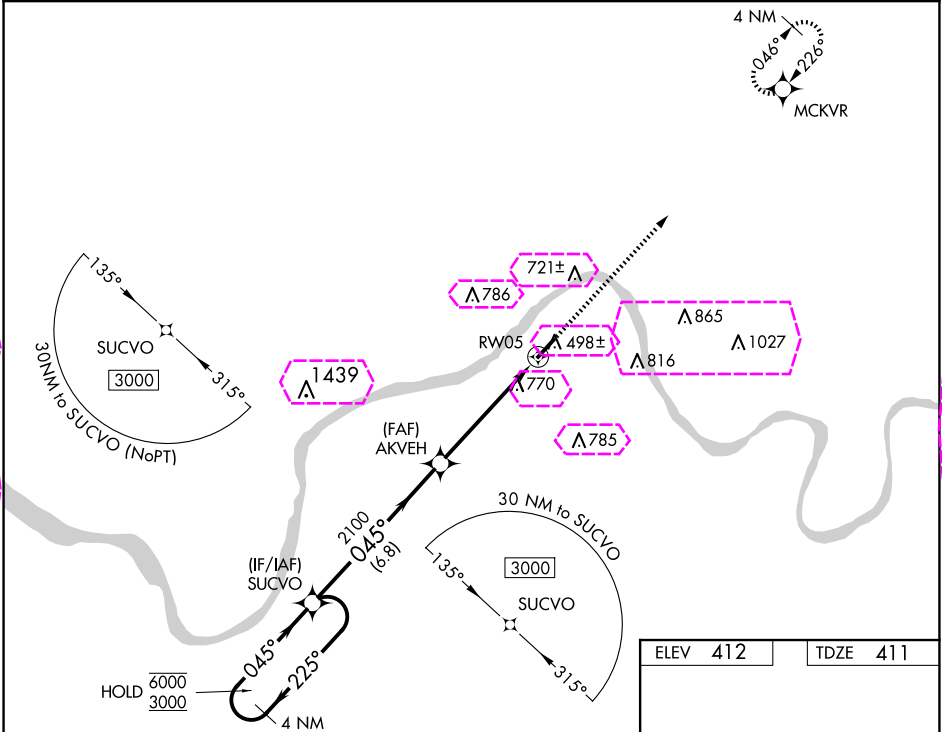
WAAS CH 42824 W05A	APP CRS 045°	Rwy Idg TDZE 411 Apt Elev 412	5002
--	------------------------	---	-------------

RNAV (GPS) RWY 5
HANCOCK COUNTY/RON LEWIS FLD (KY8)

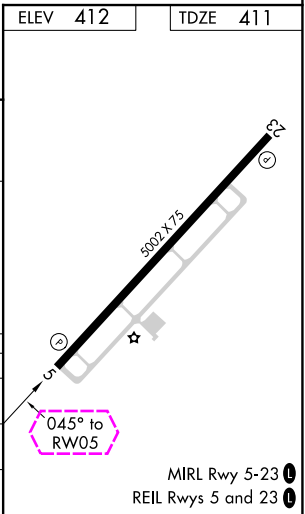
RNP APCH.

<p>▽ Rwy 5 helicopter visibility reduction below $\frac{3}{4}$ SM NA. When local altimeter setting not received, use Owensboro altimeter setting and increase all MDAs 60 feet; increase LP and LNAV Cat C visibility $\frac{1}{8}$ SM and Circling Cat C visibility $\frac{1}{4}$ SM.</p> <p>▲ NA</p>	<p>MISSED APPROACH: Climb to 3000 direct MCKVR and hold.</p>
---	--

AWOS-3 119.775	EVANSVILLE APP CON ★ 124.025 290.9	UNICOM 123.0 (CTAF) 0
--------------------------	--	---------------------------------



CATEGORY	A	B	C	D
LP MDA	1020-1	609 (700-1)	1020-1 $\frac{3}{4}$ 609 (700-1 $\frac{3}{4}$)	NA
LNAV MDA	1020-1	609 (700-1)	1020-1 $\frac{3}{4}$ 609 (700-1 $\frac{3}{4}$)	NA
CIRCLING	1020-1 608 (700-1)	1080-1 668 (700-1)	1080-1 $\frac{3}{4}$ 668 (700-1 $\frac{3}{4}$)	NA



LEWISPORT, KENTUCKY

Amdt 1B 28MAR19

HANCOCK COUNTY/RON LEWIS FLD (KY8)

37°57'N-86°51'W

RNAV (GPS) RWY 5

SE-1, 10 JUL 2025 to 07 AUG 2025

SE-1, 10 JUL 2025 to 07 AUG 2025

LEWISPORT, KENTUCKY

AL-10388 (FAA)

25219

WAAS CH 42824 W05A	APP CRS 045°	Rwy Ldg TDZE 411 Apt Elev 412	5002
--	------------------------	---	-------------

RNAV (GPS) RWY 5

HANCOCK COUNTY/RON LEWIS FLD (KY8)

RNP APCH.

▼ Rwy 5 helicopter visibility reduction below $\frac{3}{4}$ SM NA. When local altimeter setting not received, use Owensboro altimeter setting and increase all MDAs 60 feet; increase LP and LNAV Cat C visibility $\frac{1}{8}$ SM and Circling Cat C visibility $\frac{1}{4}$ SM.

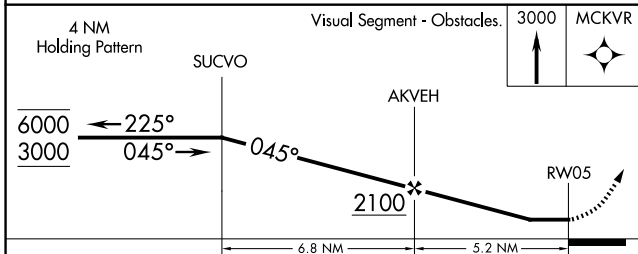
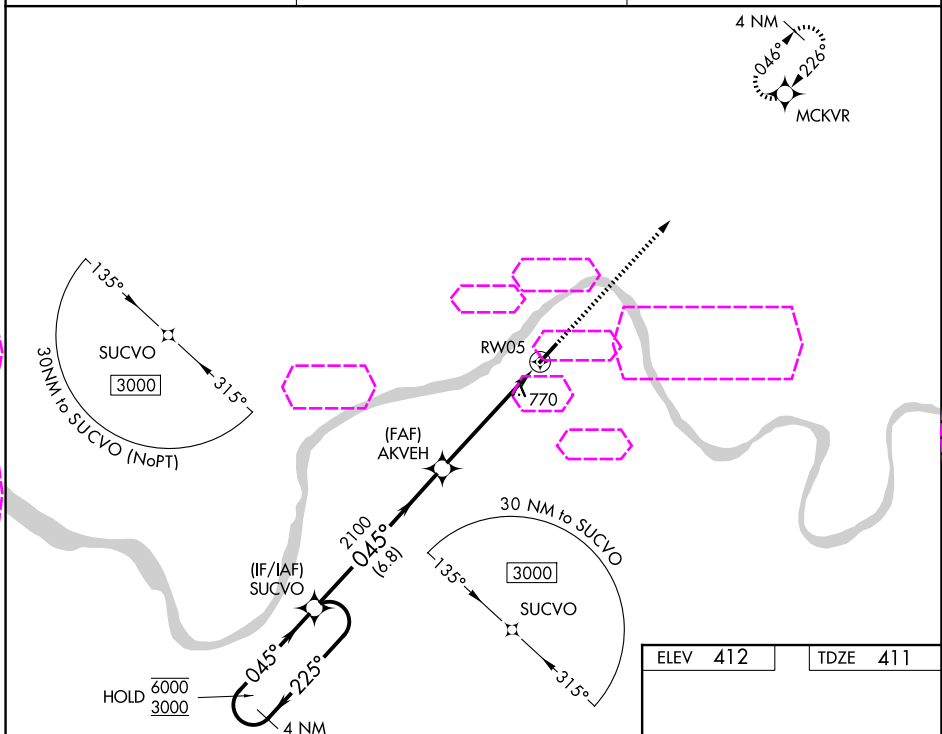
▲ NA

MISSED APPROACH:
Climb to 3000 direct
MCKVR and hold.

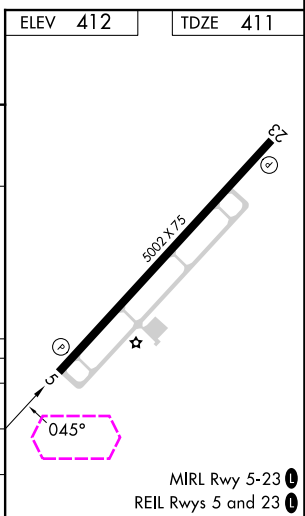
AWOS-3
119.775

EVANSVILLE APP CON ★
124.025 290.9

UNICOM
123.0 (CTAF) 0



CATEGORY	A	B	C	D
LP MDA	1020-1	609 (700-1)	1020-1 $\frac{3}{4}$ 609 (700-1 $\frac{3}{4}$)	NA
LNAV MDA	1020-1	609 (700-1)	1020-1 $\frac{3}{4}$ 609 (700-1 $\frac{3}{4}$)	NA
CIRCLING	1020-1 608 (700-1)	1080-1 668 (700-1)	1080-1 $\frac{3}{4}$ 668 (700-1 $\frac{3}{4}$)	NA



LEWISPORT, KENTUCKY

Amdt 1B 28MAR19

HANCOCK COUNTY/RON LEWIS FLD (KY8)

37°57'N-86°51'W

RNAV (GPS) RWY 5

SE-1, 07 AUG 2025 to 04 SEP 2025

SE-1, 07 AUG 2025 to 04 SEP 2025