

LEWISPORT, KENTUCKY

AL-10388 (FAA)

22195

| | | |
|--|------------------------|---|
| WAAS CH 61324 W23A | APP CRS 226° | Rwy Idg 5002 TDZE 411 Apt Elev 411 |
|--|------------------------|---|

RNAV (GPS) RWY 23

HANCOCK COUNTY/RON LEWIS FLD (KY8)

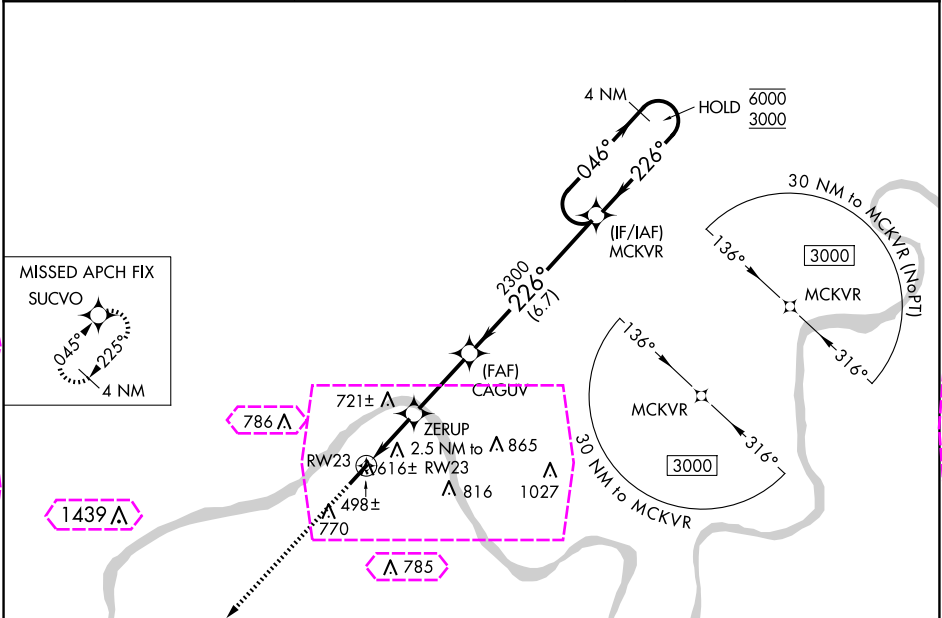
RNP APCH - GPS.

▼

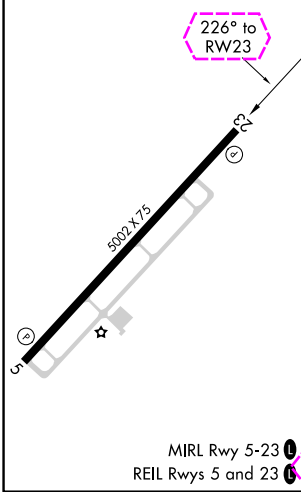
Rwy 23 helicopter visibility reduction below ¾ SM NA. For uncompensated Baro-VNAV systems, LNAV/VNAV NA below -15°C or above 54°C.



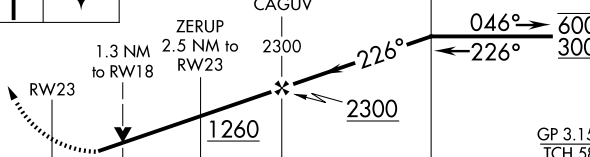

MISSED APPROACH:
Climb to 3000 direct
SUCVO and hold.

| | | |
|--------------------------|--|---------------------------------|
| AWOS-3 119.775 | EVANSVILLE APP CON ★ 124.025 290.9 | UNICOM 123.0 (CTAF) 0 |
|--------------------------|--|---------------------------------|



| | |
|----------|----------|
| ELEV 411 | TDZE 411 |
|----------|----------|



| | | | | | |
|--|---|---|-----------------------|-------------------------|----|
| 3000 | SUCVO | VGSI and RNAV glidepath not coincident (VGSI Angle 3.00/TCH 45). | | 4 NM Holding Pattern | |
|  |  | | | | |
|  | | GP 3.15° TCH 58 | | | |
| CATEGORY | | A | B | C | D |
| LPV DA | | 834-1¼ | 423 (500-1¼) | | NA |
| LNAV/VNAV DA | | 880-1⅓ | 469 (500-1⅓) | | NA |
| LNAV MDA | | 880-1 | 469 (500-1) | 880-1⅓ 469 (500-1⅓) | NA |
|  CIRCLING | | 960-1 549 (600-1) | 1080-1 669 (700-1) | 1160-2¼ 749 (800-2¼) | NA |

LEWISPORT, KENTUCKY

Amdt 2 14JUL22

HANCOCK COUNTY/RON LEWIS FLD (KY8)

37°57'N-86°51'W

RNAV (GPS) RWY 23

LEWISPORT, KENTUCKY

AL-10388 (FAA)

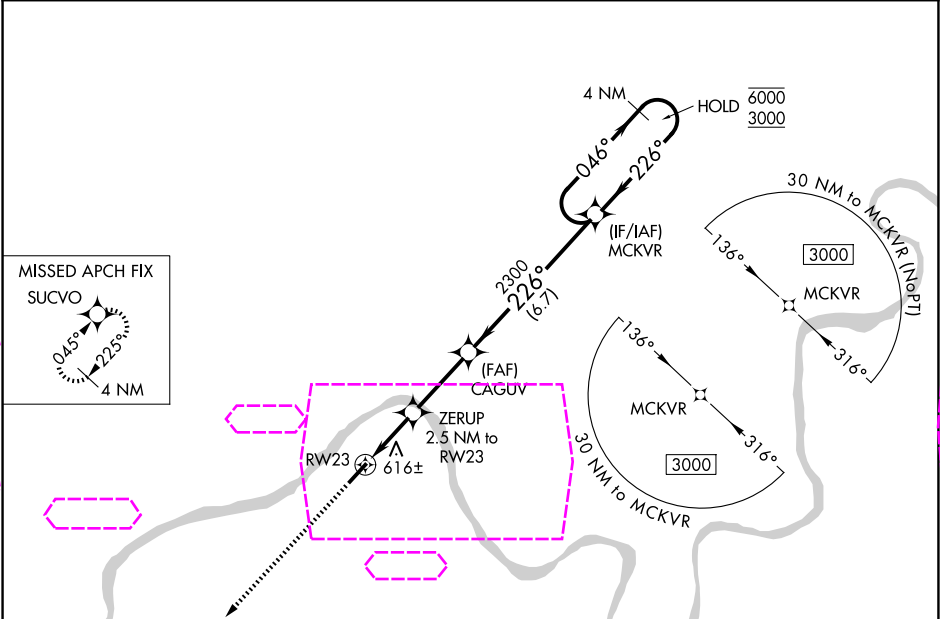
25219

| | | | |
|--|------------------------|---|-------------|
| WAAS CH 61324 W23A | APP CRS 226° | Rwy Ldg TDZE 411 Apt Elev 411 | 5002 |
|--|------------------------|---|-------------|

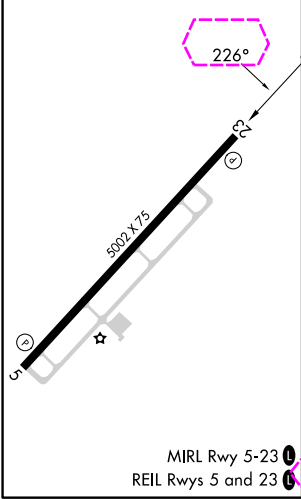
RNAV (GPS) RWY 23
HANCOCK COUNTY/RON LEWIS FLD (KY8)

| | | |
|---|--|---|
| RNP APCH - GPS. | | MISSED APPROACH: Climb to 3000 direct SUCVO and hold. |
| ▼ Rwy 23 helicopter visibility reduction below ¾ SM NA. For uncompensated Baro-VNAV systems, ▲ LNAV/VNAV NA below -15°C or above 54°C. | | |

| | | |
|--------------------------|--|---------------------------------|
| AWOS-3 119.775 | EVANSVILLE APP CON ★ 124.025 290.9 | UNICOM 123.0 (CTAF) 0 |
|--------------------------|--|---------------------------------|



| | |
|----------|----------|
| ELEV 411 | TDZE 411 |
|----------|----------|



| | | | | |
|------------------|----------------------|---|-------------------------|----------------------|
| 3000 SUCVO | | VGSI and RNAV glidepath not coincident (VGSI Angle 3.00/TCH 45). | | 4 NM Holding Pattern |
| 3000 | | CAGUV | | MCKVR |
| RWY 23 | | ZERUP 2.5 NM to RWY 23 | | 046° 6000 |
| 1.3 NM to RWY 18 | | 2300 | | 226° 3000 |
| 1260 | | 2300 | | GP 3.15° |
| 1.3 NM | | 1.2 NM | | TCH 58 |
| 2.9 NM | | 6.7 NM | | |
| CATEGORY | A | B | C | D |
| LPV DA | 834-1¼ | 423 (500-1¼) | | NA |
| LNAV/VNAV DA | 880-1⅜ | 469 (500-1⅜) | | NA |
| LNAV MDA | 880-1 | 469 (500-1) | 880-1⅜ 469 (500-1⅜) | NA |
| CIRCLING | 960-1 549 (600-1) | 1080-1 669 (700-1) | 1160-2¼ 749 (800-2¼) | NA |

LEWISPORT, KENTUCKY

Amdt 2 14JUL22

HANCOCK COUNTY/RON LEWIS FLD (KY8)

37°57'N-86°51'W

RNAV (GPS) RWY 23