

SPENCER, WEST VIRGINIA

AL-10386 (FAA)

23166

WAAS CH <b>62928</b> <b>W28A</b>	APP CRS <b>280°</b>	Rwy Idg <b>4549</b> TDZE <b>928</b> Apt Elev <b>928</b>
--	------------------------	---

# RNAV (GPS) RWY 28

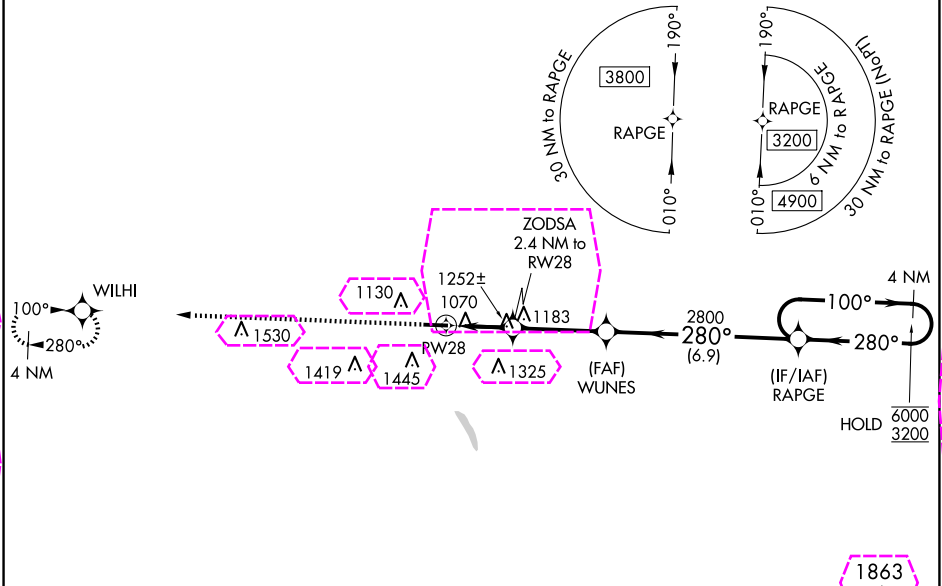
BOGGS FLD (USW)

RNP APCH.

Rwy 28 helicopter visibility reduction below 1 SM NA. Rwy 28 Straight-in and Circling minimums NA at night. When local altimeter setting not received, use Charleston altimeter setting and increase all MDA's 80 feet, LP and LNAV Cats C and D visibility  $\frac{1}{8}$  SM and Circling Cats C and D visibility  $\frac{1}{4}$  SM. \*1780 when using Charleston altimeter setting.

MISSED APPROACH: Climb to 3500 direct WILHI and hold.

AWOS-3 <b>118.575</b>	CHARLESTON APP CON <b>124.1 269.125</b>	UNICOM <b>122.725 (CTAF) 0</b>
--------------------------	--	-----------------------------------



ELEV <b>928</b>	TDZE <b>928</b>
-----------------	-----------------

Visual Segment - Obstacles.				
WUNES				
ZODSA 2.4 NM to RW28				
RW28				
1720*				
2800				
RAPGE				
4 NM Holding Pattern				
100° → 6000 ← 280° 3200				
CATEGORY	A	B	C	D
LP MDA	1520-1	592 (600-1)	1520-1 $\frac{3}{4}$	592 (600-1 $\frac{3}{4}$ )
LNAV MDA	1520-1	592 (600-1)	1520-1 $\frac{3}{4}$	592 (600-1 $\frac{3}{4}$ )
<b>CIRCLING</b>	1560-1 632 (700-1)	1760-1 $\frac{1}{4}$ 832 (900-1 $\frac{1}{4}$ )	1760-2 $\frac{1}{2}$ 832 (900-2 $\frac{1}{2}$ )	1760-2 $\frac{3}{4}$ 832 (900-2 $\frac{3}{4}$ )

SPENCER, WEST VIRGINIA

BOGGS FLD (USW)

Amdt 1C 25FEB21

38°49'N-81°21'W

# RNAV (GPS) RWY 28

SPENCER, WEST VIRGINIA

AL-10386 (FAA)

25219

WAAS CH <b>62928</b> <b>W28A</b>	APP CRS <b>280°</b>	Rwy Ldg <b>4549</b> TDZE <b>928</b> Apt Elev <b>928</b>
--	------------------------	---

# RNAV (GPS) RWY 28

BOGGS FLD (USW)

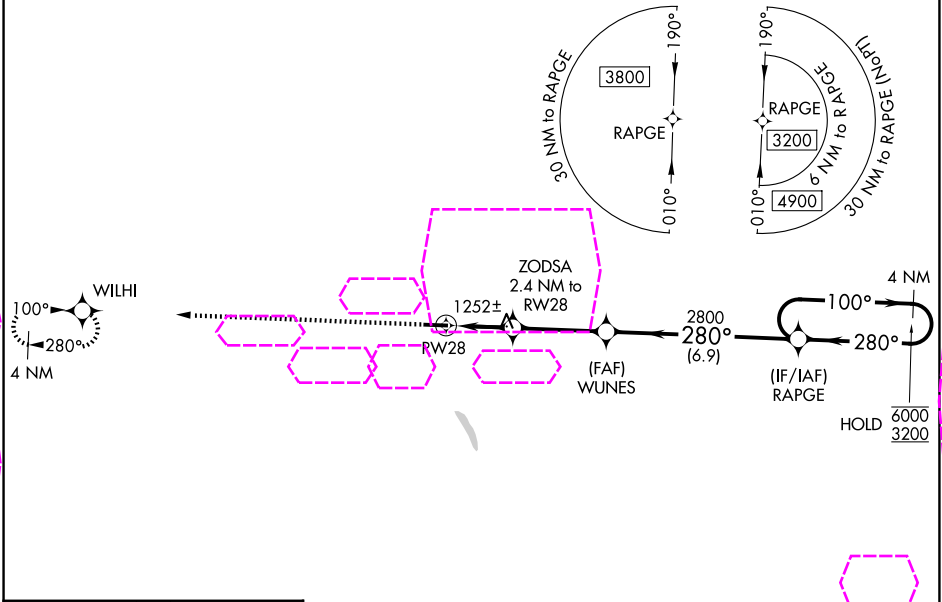
RNP APCH.

**▼** Rwy 28 helicopter visibility reduction below 1 SM NA. Rwy 28 Straight-in and Circling minimums NA at night. When local altimeter setting not received, use Charleston altimeter setting and increase all MDA's 80 feet, LP and LNAV Cats C and D visibility  $\frac{1}{8}$  SM and Circling Cats C and D visibility  $\frac{1}{4}$  SM. \*1780 when using Charleston altimeter setting.

**▲ NA**

MISSED APPROACH: Climb to 3500 direct WILHI and hold.

AWOS-3 <b>118.575</b>	CHARLESTON APP CON <b>124.1 269.125</b>	UNICOM <b>122.725 (CTAF) 0</b>
--------------------------	--	-----------------------------------



ELEV 928

TDZE 928

01

4549 X 75

280°

28

3500

↑

WILHI

Visual Segment - Obstacles.

WUNES

ZODSA  
2.4 NM to  
RW28

RW28

1720\*

2800

RAPGE

4 NM  
Holding Pattern

100° → 6000

← 280° 3200

2.4 NM

3.4 NM

6.9 NM

CATEGORY	A	B	C	D
LP MDA	1520-1	592 (600-1)	1520-1¾	592 (600-1¾)
LNAV MDA	1520-1	592 (600-1)	1520-1¾	592 (600-1¾)
CIRCLING	1560-1 632 (700-1)	1760-1¼ 832 (900-1¼)	1760-2½ 832 (900-2½)	1760-2¾ 832 (900-2¾)

MIRL Rwy 10-28

SPENCER, WEST VIRGINIA

BOGGS FLD (USW)

Amdt 1C 25FEB21

38°49'N-81°21'W

# RNAV (GPS) RWY 28

NE-4, 07 AUG 2025 to 04 SEP 2025

NE-4, 07 AUG 2025 to 04 SEP 2025