

FRANKLIN, NORTH CAROLINA

AL-10364 (FAA)

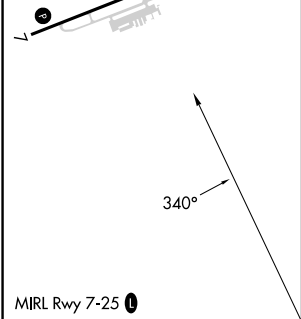
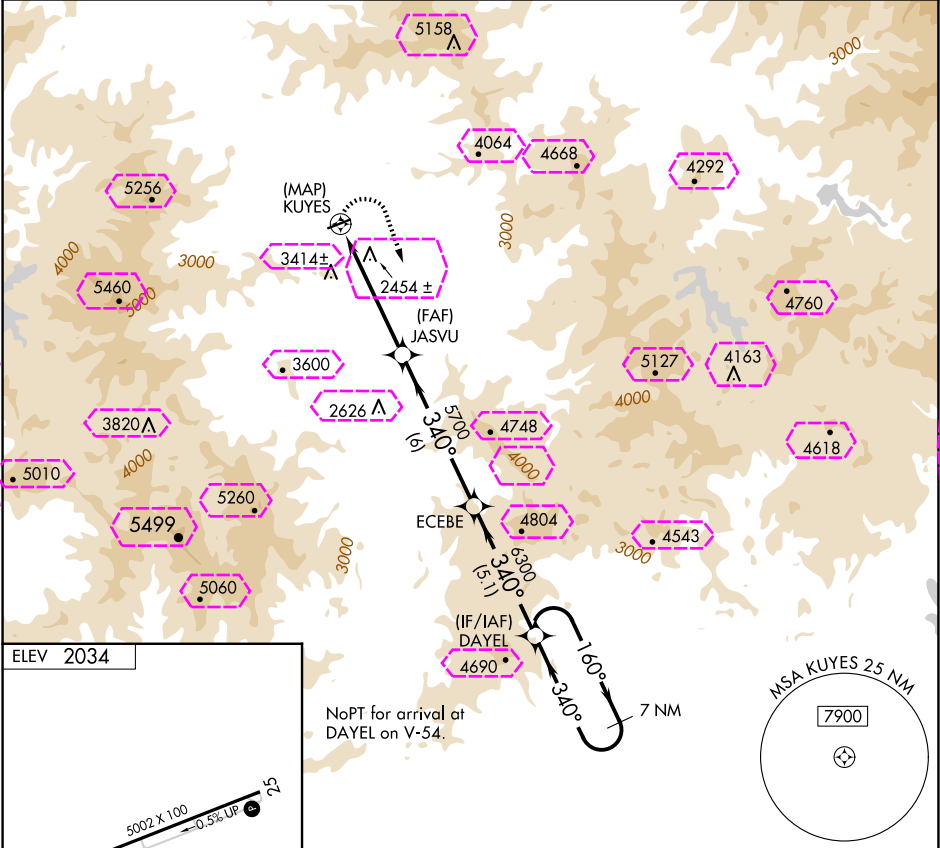
25107

APP CRS 340°	Rwy Idg TDZE Apt Elev	N/A N/A 2034
-----------------	-----------------------------	--------------------

RNAV (GPS)-A
MACON COUNTY (1A5)

When local altimeter setting not received, Procedure NA. DME/DME RNP-0.3 NA. Procedure NA at night.	MISSED APPROACH: Climbing right turn to 7000 direct DAYEL and hold.
---	--

AWOS-3P 118.225	ATLANTA CENTER 134.8 379.95	UNICOM 123.05 (CTAF) 0
--------------------	--------------------------------	---------------------------



<div><div><div><div><div>7000</div><div>DAYEL</div></div><div><div><div><div><div></div><div></div><div></div><div></div></div><div>7 NM Holding Pattern</div></div></div></div><div><div><div><div><div>KUYES</div><div>JASVU</div><div>ECEBE</div><div>DAYEL</div></div><div><div><div><div>160°</div><div>7000</div></div><div><div>340°</div></div></div><div><div><div>340°</div><div>6300</div></div><div><div>5700</div></div></div></div><div><div><div>5.2 NM</div><div>6 NM</div><div>5.1 NM</div></div></div></div></div></div></div></div></div>				
CATEGORY	A	B	C	D
CIRCLING	3620-1¼ 1586 (1600-1¼)	3760-1½ 1726 (1800-1½)	4240-3 2206 (2300-3)	NA

FRANKLIN, NORTH CAROLINA

AL-10364 (FAA)

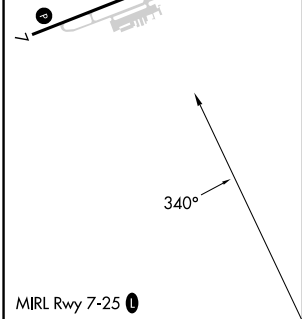
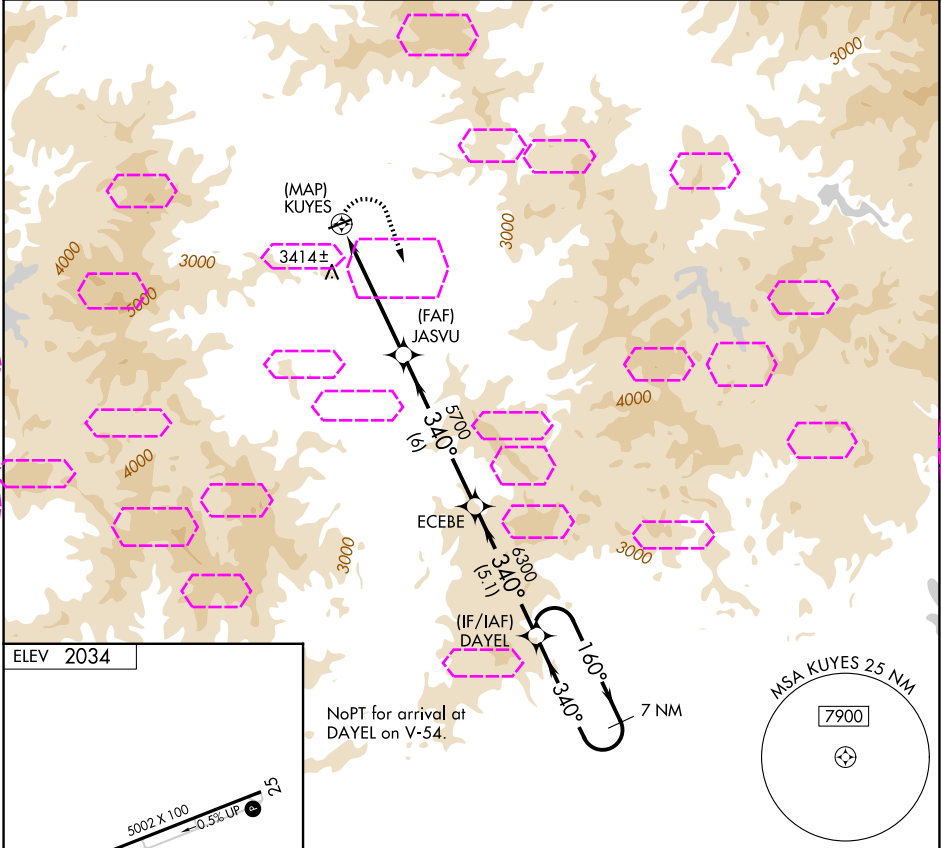
25219

APP CRS 340°	Rwy Ldg TDZE Apt Elev	N/A N/A 2034
------------------------	-----------------------------	---------------------------

RNAV (GPS)-A
MACON COUNTY (1A5)

 -11°C	When local altimeter setting not received, Procedure NA. DME/DME RNP-0.3 NA. Procedure NA at night.	MISSED APPROACH: Climbing right turn to 7000 direct DAYEL and hold.
-------------------	---	--

AWOS-3P 118.225	ATLANTA CENTER 134.8 379.95	UNICOM 123.05 (CTAF)
---------------------------	---------------------------------------	--------------------------------



<div><div>7000</div><div>DAYEL</div></div>		<div><div>7 NM Holding Pattern</div></div>		
<div><div><div><div></div><div></div><div></div><div></div></div></div><div><div>KUYES</div><div>JASVU</div><div>ECEBE</div><div>DAYEL</div></div><div><div>5700</div><div>6300</div><div>7000</div></div></div>				
<div><div>5.2 NM</div><div>6 NM</div><div>5.1 NM</div></div>				
CATEGORY	A	B	C	D
CIRCLING	<div><div>3620-1¼</div><div>1586 (1600-1¼)</div></div>	<div><div>3760-1½</div><div>1726 (1800-1½)</div></div>	<div><div>4240-3</div><div>2206 (2300-3)</div></div>	NA

FRANKLIN, NORTH CAROLINA
Orig-A 20MAY21

35°13'N-83°25'W

MACON COUNTY (1A5)
RNAV (GPS)-A

SE-2, 07 AUG 2025 to 04 SEP 2025

SE-2, 07 AUG 2025 to 04 SEP 2025