

MOREHEAD, KENTUCKY

AL-10359 (FAA)

25163

WAAS CH <b>86909</b> <b>W02A</b>	APP CRS <b>026°</b>	Rwy Ldg TDZE Apt Elev	<b>5500</b> <b>1028</b> <b>1028</b>
--	------------------------	-----------------------------	---

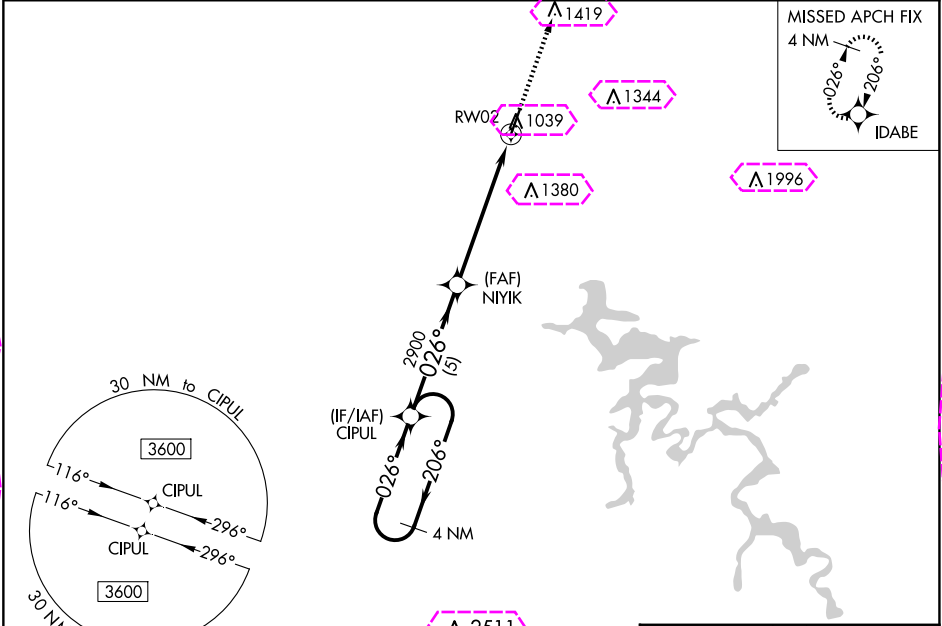
# RNAV (GPS) RWY 2

MOREHEAD-ROWAN COUNTY CLYDE A THOMAS RGNL (SYM)

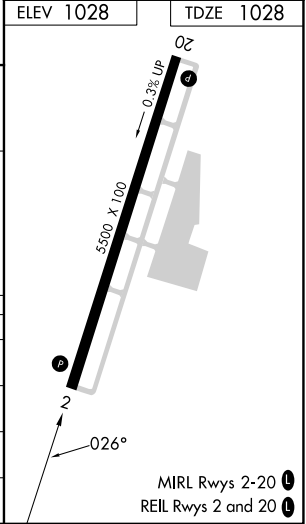
**T** **A** For uncompensated Baro-VNAV systems, LNAV/VNAV NA below -17°C (2°F) or above 54°C (130°F). DME/DME RNP-0.3 NA. Baro-VNAV and VDP NA when using Mount Sterling altimeter setting. When local altimeter setting not received, use Mount Sterling altimeter setting: increase all DA 50 feet and all MDA 60 feet; increase LPV all Cats and LNAV Cats C/D visibility 1/8 mile, LNAV/VNAV all Cats visibility 1/4 mile, and Circling Cats C/D visibility 1/4 mile.

MISSED APPROACH: Climb to 3600 direct IDABE and hold.

AWOS-3 <b>119.95</b>	INDIANAPOLIS CENTER <b>124.225 360.725</b>	UNICOM <b>122.7 (CTAF) 0</b>
-------------------------	---	---------------------------------



4 NM Holding Pattern		CIPUL		3600		IDABE	
3600		2900		2900		2900	
GP 3.00°		TCH 40		*1.4 NM to RW02		*LNAV only	
5 NM		4.4 NM		1.4 NM			
CATEGORY	A	B	C	D			
LPV DA	1228-3/4		200 (200-3/4)				
LNAV/VNAV DA	1439-1 3/8		411 (500-1 3/8)				
LNAV MDA	1500-1	472 (500-1)	1500-1 3/8	472 (500-1 3/8)			
<b>CIRCLING</b>	1520-1	492 (500-1)	1760-2	1820-2 1/2			
			732 (800-2)	792 (800-2 1/2)			



MOREHEAD, KENTUCKY

AL-10359 (FAA)

25219

WAAS CH <b>86909</b> <b>W02A</b>	APP CRS <b>026°</b>	Rwy Ldg TDZE Apt Elev	<b>5500</b> <b>1028</b> <b>1028</b>
--	------------------------	-----------------------------	---

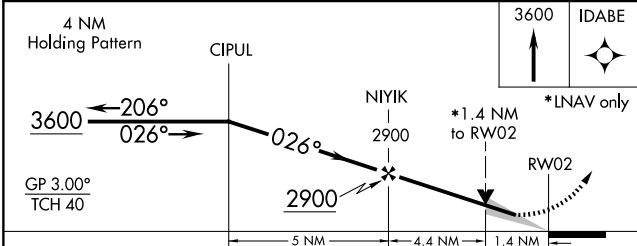
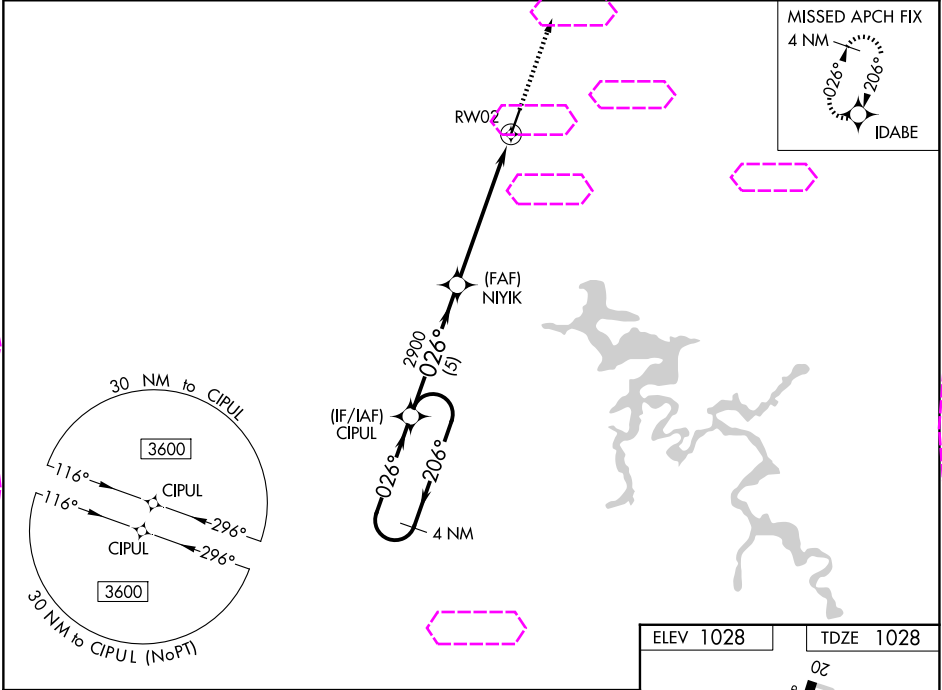
# RNAV (GPS) RWY 2

MOREHEAD-ROWAN COUNTY CLYDE A THOMAS RGNL (SYM)

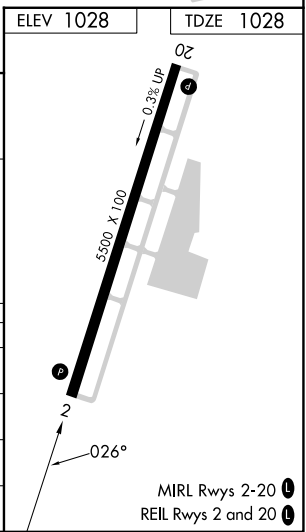
**T** For uncompensated Baro-VNAV systems, LNAV/VNAV NA below -17°C (2°F) or above 54°C (130°F). DME/DME RNP-0.3 NA. Baro-VNAV and VDP NA when using Mount Sterling altimeter setting. When local altimeter setting not received, use Mount Sterling altimeter setting: increase all DA 50 feet and all MDA 60 feet; increase LPV all Cats and LNAV Cats C/D visibility 1/8 mile, LNAV/VNAV all Cats visibility 1/4 mile, and Circling Cats C/D visibility 1/4 mile.

**A** MISSED APPROACH: Climb to 3600 direct IDABE and hold.

AWOS-3 <b>119.95</b>	INDIANAPOLIS CENTER <b>124.225 360.725</b>	UNICOM <b>122.7 (CTAF) 0</b>
-------------------------	---	---------------------------------



CATEGORY	A	B	C	D
LPV DA		1228-3/4	200 (200-3/4)	
LNAV/VNAV DA		1439-1 3/8	411 (500-1 3/8)	
LNAV MDA	1500-1	472 (500-1)	1500-1 3/8	472 (500-1 3/8)
CIRCLING	1520-1	492 (500-1)	1760-2 732 (800-2)	1820-2 1/2 792 (800-2 1/2)



MOREHEAD, KENTUCKY  
Amdt 1A 02DEC21

38°13'N-83°35'W

# RNAV (GPS) RWY 2

MOREHEAD-ROWAN COUNTY CLYDE A THOMAS RGNL (SYM)

SE-1, 07 AUG 2025 to 04 SEP 2025

SE-1, 07 AUG 2025 to 04 SEP 2025

MIRL Rwy 2-20 0  
REIL Rwy 2 and 20 0