

MOREHEAD, KENTUCKY

AL-10359 (FAA)

25219

WAAS CH 78209 W20A	APP CRS 206°	Rwy Ldg TDZE Apt Elev	5500 1020 1028
--	------------------------	-----------------------------	---

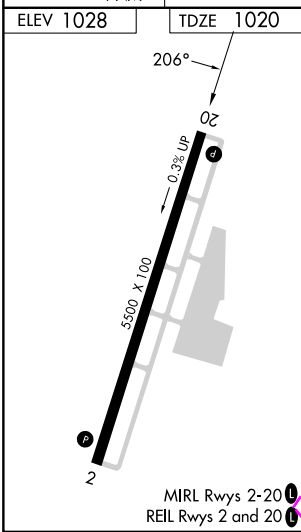
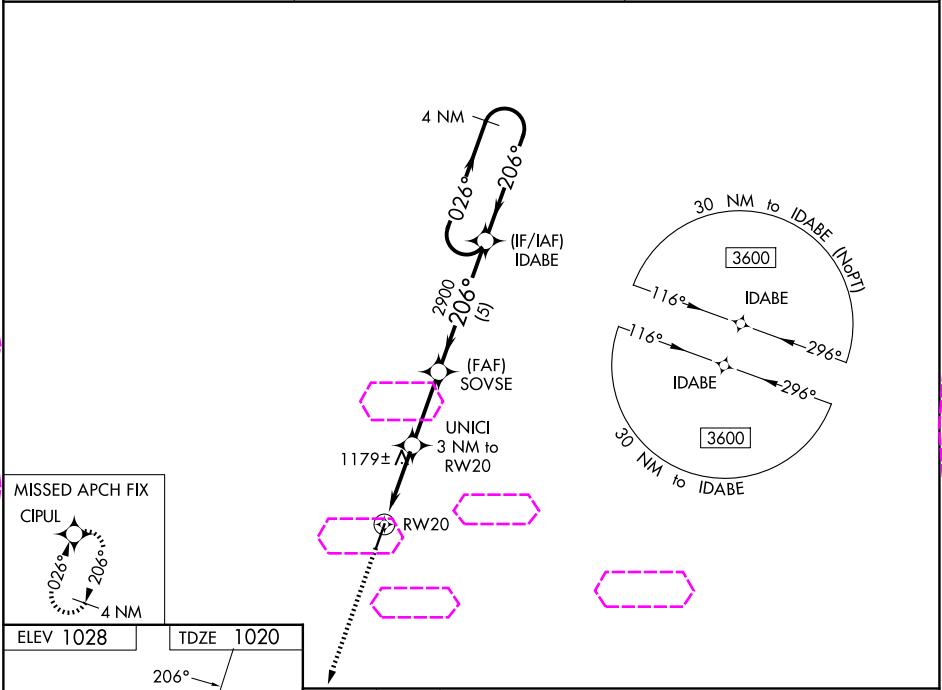
RNAV (GPS) RWY 20

MOREHEAD-ROWAN COUNTY CLYDE A THOMAS RGNL (SYM)

⚠ For uncompensated Baro-VNAV systems, LNAV/VNAV NA below -17°C (2°F) or above 54°C (130°F). DME/DME RNP-0.3 NA. Baro-VNAV and VDP NA when using Mount Sterling altimeter setting. When local altimeter setting not received, use Mount Sterling altimeter setting: increase all DA 50 feet and all MDA 60 feet; increase LPV and LNAV/VNAV all Cats visibility 1/8 mile, LNAV Cats C/D visibility 1/8 mile, and Circling Cats C/D visibility 1/4 mile.

MISSED APPROACH: Climb to 3600 direct CIPUL and hold.

AWOS-3 119.95	INDIANAPOLIS CENTER 124.225 360.725	UNICOM 122.7 (CTAF) 0
-------------------------	---	---------------------------------



3600	CIPUL	UNICI 3 NM to RW20	SOVSE 2900	IDABE 4 NM Holding Pattern	026° → 3600	← 206°	GP 3.00° TCH 40
*LNAV only		*1.2 NM to RW20	*2000				
1.2 NM	1.8 NM	2.8 NM	5 NM				
CATEGORY	A	B	C	D			
LPV DA		1270-7/8	250 (300-7/8)				
LNAV/VNAV DA		1453-1 1/2	433 (500-1 1/2)				
LNAV MDA	1440-1	420 (500-1)	1440-1 1/4	420 (500-1 1/4)			
CIRCLING	1520-1	492 (500-1)	1760-2 732 (800-2)	1820-2 1/2 792 (700-2 1/2)			

MOREHEAD, KENTUCKY
Amdt 1A 02DEC21

MOREHEAD-ROWAN COUNTY CLYDE A THOMAS RGNL (SYM)
38°13'N-83°35'W
RNAV (GPS) RWY 20

SE-1, 07 AUG 2025 to 04 SEP 2025

SE-1, 07 AUG 2025 to 04 SEP 2025