

PHILIPPI, WEST VIRGINIA

AL-10351 (FAA)

24193

| | | |
|---------|----------|------|
| APP CRS | Rwy Idg | 3050 |
| 249° | TDZE | 1755 |
| | Apt Elev | 1755 |

RNAV (GPS) RWY 26

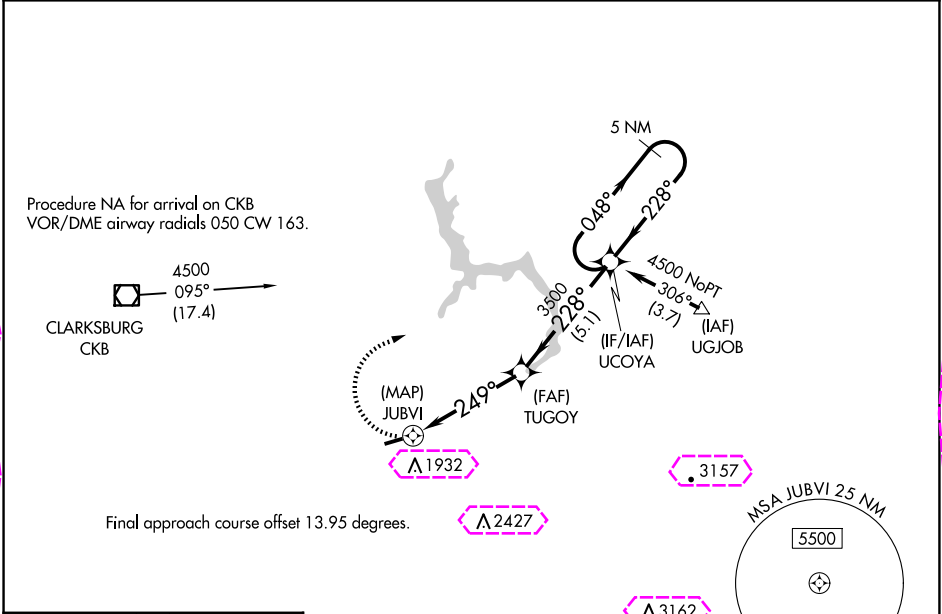
PHILIPPI/BARBOUR COUNTY RGNL (79D)

⚠ Rwy 26 helicopter visibility reduction below 1 SM NA.
DME/DME RNP-0.3 NA. Procedure NA at night.

⚠ NA Use Clarksburg altimeter setting, when not received,
use Buckhannon altimeter setting.

MISSED APPROACH: Climbing right
turn to 4500 direct UCOYA and hold.

| | | |
|---------------------|---------------------------------------|---------------|
| CKB ASOS 127.825 | CLARKSBURG APP CON ★ 121.15 284.65 | CTAF 122.9 |
|---------------------|---------------------------------------|---------------|



ELEV 1755 TDZE 1755

REIL Rwy 8
MRL Rwy 8-26

| | | | | |
|-----------------|-----------------------|---|----|-------------------------|
| 4500 | UCOYA | VGSI and descent angles not coincident (VGSI Angle 3.00/TCH 20). | | 5 NM Holding Pattern |
| | | | | |
| CATEGORY | A | B | C | D |
| LNAV MDA | 2460-1 | 705 (800-1) | NA | |
| CIRCLING | 2520-1 765 (800-1) | 2520-1¼ 765 (800-1¼) | NA | |

PHILIPPI, WEST VIRGINIA
Orig-B 08OCT20

39°10'N - 80°04'W

RNAV (GPS) RWY 26

PHILIPPI, WEST VIRGINIA

AL-10351 (FAA)

25219

| | | |
|---------|----------|------|
| APP CRS | Rwy Ldg | 3050 |
| 249° | TDZE | 1755 |
| | Apt Elev | 1755 |

RNAV (GPS) RWY 26

PHILIPPI/BARBOUR COUNTY RGNL (79D)

▼
NA Rwy 26 helicopter visibility reduction below 1 SM NA.
DME/DME RNP-0.3 NA. Procedure NA at night.
▲ NA Use Clarksburg altimeter setting, when not received,
use Buckhannon altimeter setting.

MISSED APPROACH: Climbing right
turn to 4500 direct UCOYA and hold.

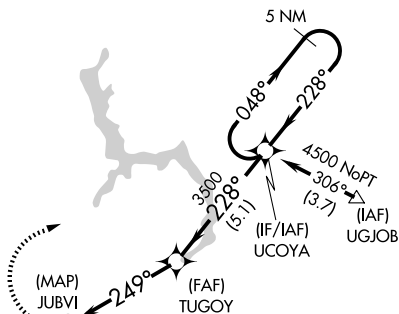
CKB ASOS
127.825

CLARKSBURG APP CON ★
121.15 284.65

CTAF
122.9

Procedure NA for arrival on CKB
VOR/DME airway radials 050 CW 163.

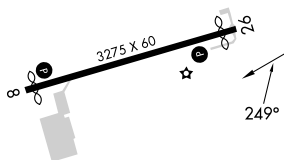
4500
095°
(17.4)
CLARKSBURG
CKB



Final approach course offset 13.95 degrees.

ELEV 1755

TDZE 1755



REIL Rwy 8
MRL Rwy 8-26

| | | | | |
|----------|-----------------------|---|--------|-------------------------|
| 4500 | UCOYA | VGSI and descent angles not coincident (VGSI Angle 3.00/TCH 20). | | 5 NM Holding Pattern |
| | | | | |
| 0.5 | | 4.5 NM | 5.1 NM | |
| CATEGORY | A | B | C | D |
| LNAV MDA | 2460-1 | 705 (800-1) | NA | |
| CIRCLING | 2520-1 765 (800-1) | 2520-1¼ 765 (800-1¼) | NA | |

PHILIPPI, WEST VIRGINIA
Orig-B 08OCT20

39°10'N - 80°04'W

RNAV (GPS) RWY 26

NE-4, 07 AUG 2025 to 04 SEP 2025

NE-4, 07 AUG 2025 to 04 SEP 2025