

PRAIRIE DU SAC, WISCONSIN

AL-10335 (FAA)

24025

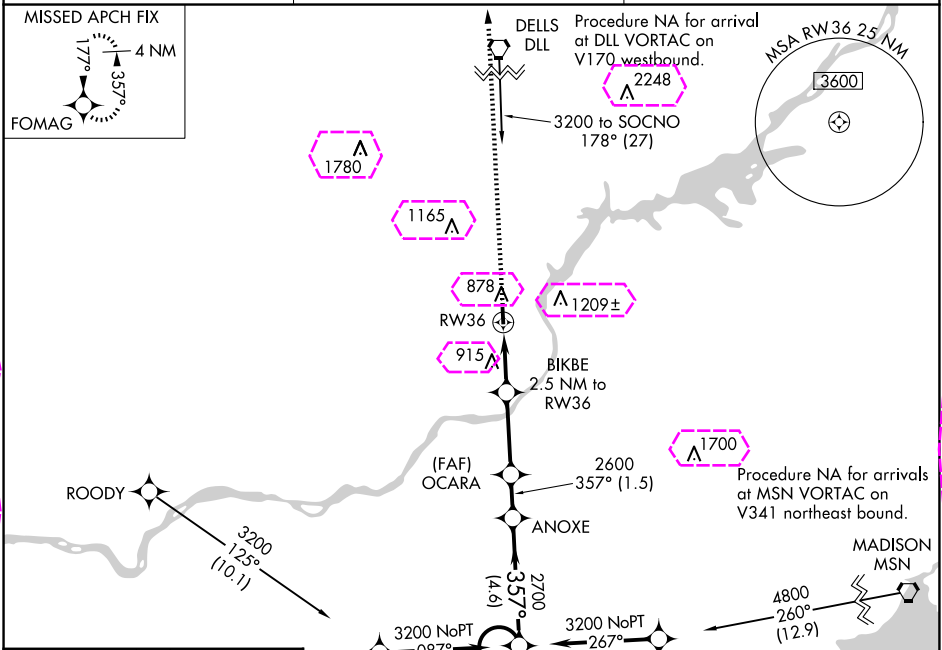
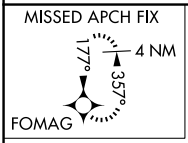
APP CRS	Rwy Idg	2936
357°	TDZE	832
	Apt Elev	832

RNAV (GPS) RWY 36

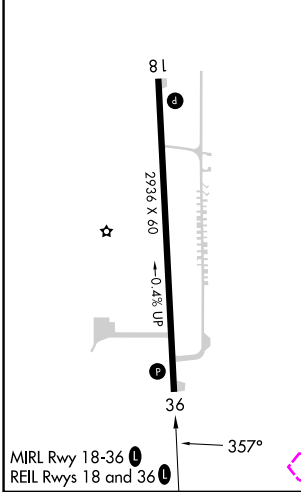
SAUK/PRAIRIE (91C)

RNP APCH	MISSED APPROACH: Climb to 3000 direct FOMAG and hold.
Rwy 36 helicopter visibility reduction below 3/4 SM NA. Use Madison altimeter setting.	

MSN ASOS 124.65 278.3	MADISON APP CON ★ 135.45 343.7	CTAF 122.9
--------------------------	-----------------------------------	---------------



ELEV 832	TDZE 832
----------	----------



3000 ↑	FOMAG 	VGSI and descent angles not coincident (VGSI Angle 3.00/TCH 26).	4 NM Holding Pattern

PRAIRIE DU SAC, WISCONSIN

Amtd 1 05DEC19

43°18'N-89°45'W

SAUK/PRAIRIE (91C)

RNAV (GPS) RWY 36

EC-3, 10 JUL 2025 to 07 AUG 2025

EC-3, 10 JUL 2025 to 07 AUG 2025

PRAIRIE DU SAC, WISCONSIN

AL-10335 (FAA)

25219

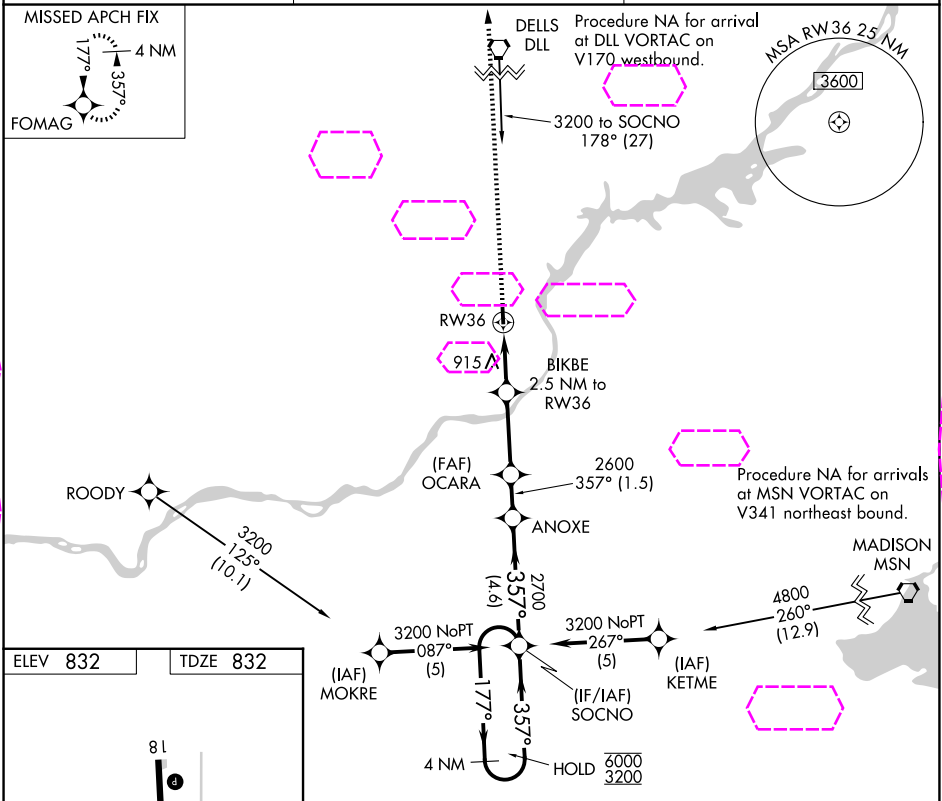
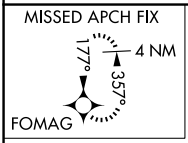
APP CRS	Rwy Ldg	2936
357°	TDZE	832
	Apt Elev	832

RNAV (GPS) RWY 36

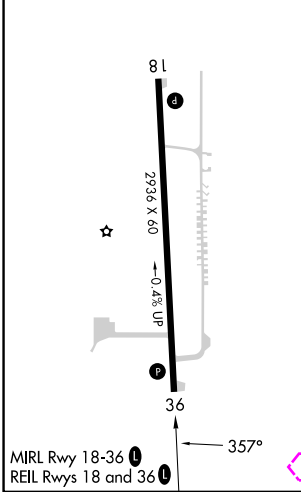
SAUK/PRAIRIE (91C)



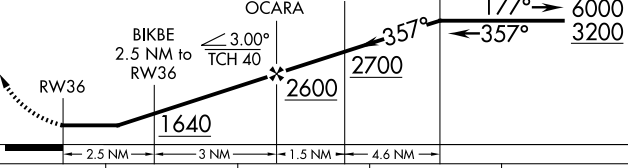
RNP APCH	MISSED APPROACH: Climb to 3000 direct FOMAG and hold.
NA	Rwy 36 helicopter visibility reduction below 3/4 SM NA. Use Madison altimeter setting.

MSN ASOS 124.65 278.3	MADISON APP CON ★ 135.45 343.7	CTAF 122.9 0
--------------------------	-----------------------------------	-----------------



ELEV 832	TDZE 832
----------	----------



3000	FOMAG	VGSI and descent angles not coincident (VGSI Angle 3.00/TCH 26).		4 NM Holding Pattern
				
CATEGORY	A	B	C	D
LNAV MDA	1240-1	408 (500-1)	NA	
CIRCLING	1400-1 568 (600-1)	1460-1 628 (700-1)	NA	

PRAIRIE DU SAC, WISCONSIN
Amdt 1 05DEC19

43°18'N-89°45'W

RNAV (GPS) RWY 36

SAUK/PRAIRIE (91C)

EC-3, 07 AUG 2025 to 04 SEP 2025

EC-3, 07 AUG 2025 to 04 SEP 2025