

PRAIRIE DU SAC, WISCONSIN

AL-10335 (FAA)

24025

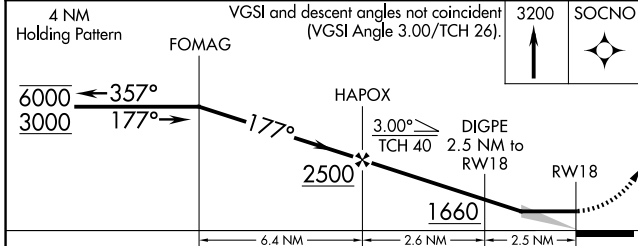
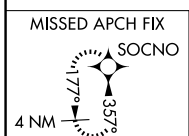
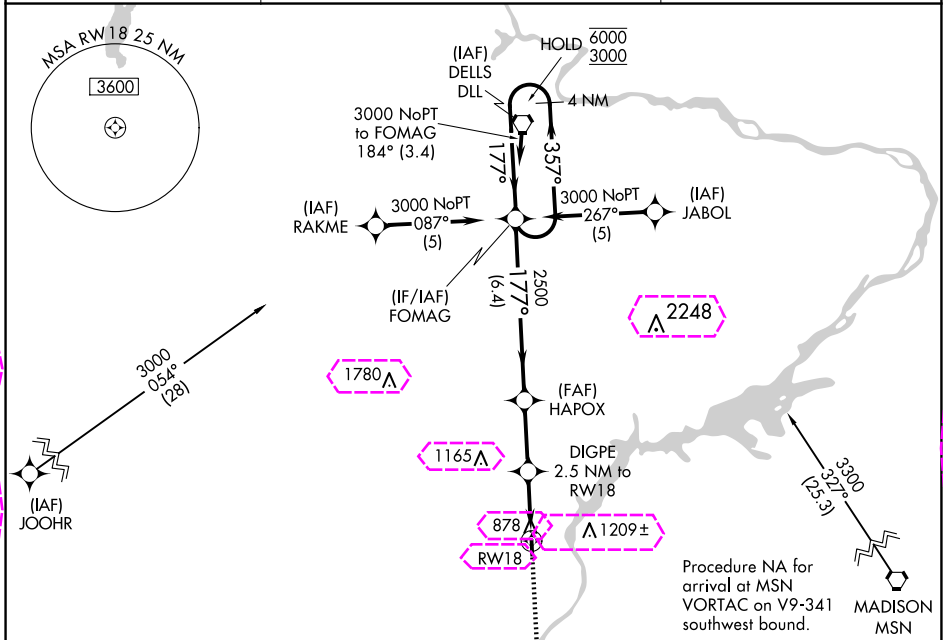
APP CRS	Rwy Idg	2936
177°	TDZE	832
	Apt Elev	832

RNAV (GPS) RWY 18

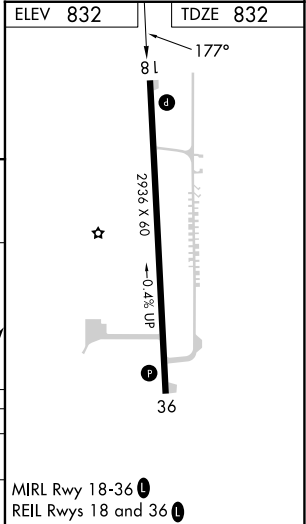
SAUK/PRAIRIE (91C)

RNP APCH.	MISSED APPROACH: Climb to 3200 direct SOCNO and hold.
NA	Use Madison altimeter setting.

MSN ASOS 124.65 278.3	MADISON APP CON★ 135.45 343.7	CTAF 122.9
--------------------------	----------------------------------	---------------



CATEGORY	A	B	C	D
LNVA MDA	1260-1	428 (500-1)	NA	NA
CIRCLING	1400-1 568 (600-1)	1460-1 628 (700-1)	NA	NA



PRAIRIE DU SAC, WISCONSIN

AL-10335 (FAA)

25219

APP CRS
177°

Rwy Ldg **2936**
TDZE **832**
Apt Elev **832**

RNAV (GPS) RWY 18

SAUK/PRAIRIE (91C)

RNP APCH.



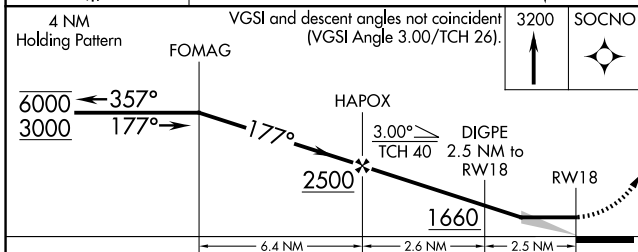
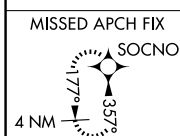
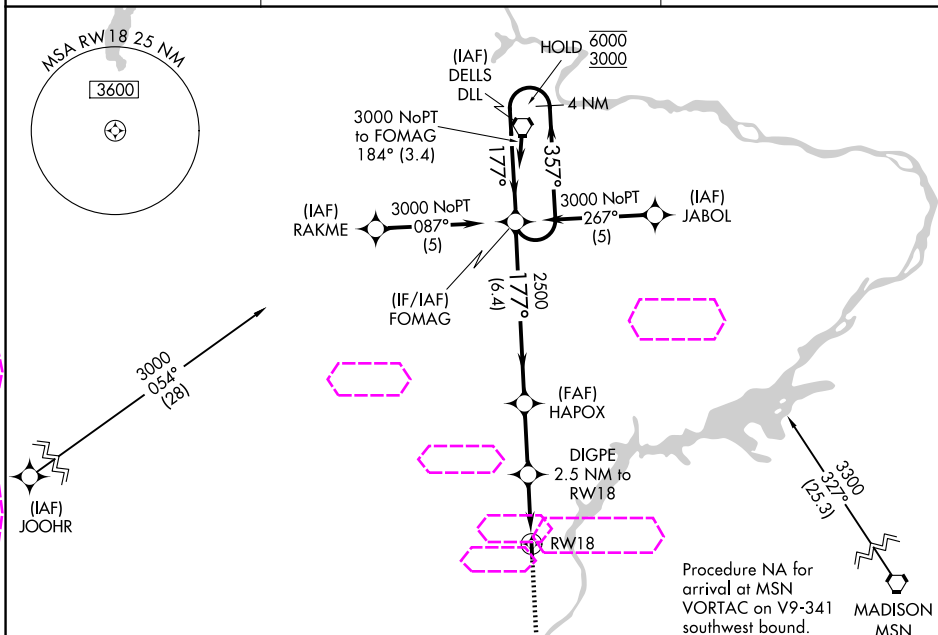
Use Madison altimeter setting.

MISSED APPROACH: Climb to
3200 direct SOCNO and hold.

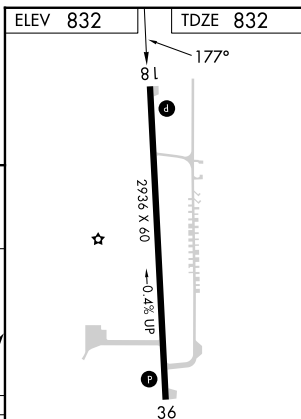
MSN ASOS
124.65 278.3

MADISON APP CON★
135.45 343.7

CTAF
122.9



CATEGORY	A	B	C	D
LNVA MDA	1260-1	428 (500-1)	NA	NA
CIRCLING	1400-1 568 (600-1)	1460-1 628 (700-1)	NA	NA



MIRL Rwy 18-36

REIL Rwy 18 and 36

PRAIRIE DU SAC, WISCONSIN

Amdt 1 05DEC19

43°18'N-89°45'W

SAUK/PRAIRIE (91C)

RNAV (GPS) RWY 18

EC-3, 07 AUG 2025 to 04 SEP 2025

EC-3, 07 AUG 2025 to 04 SEP 2025