

TAPPAHANNOCK, VIRGINIA

AL-10331 (FAA)

24109

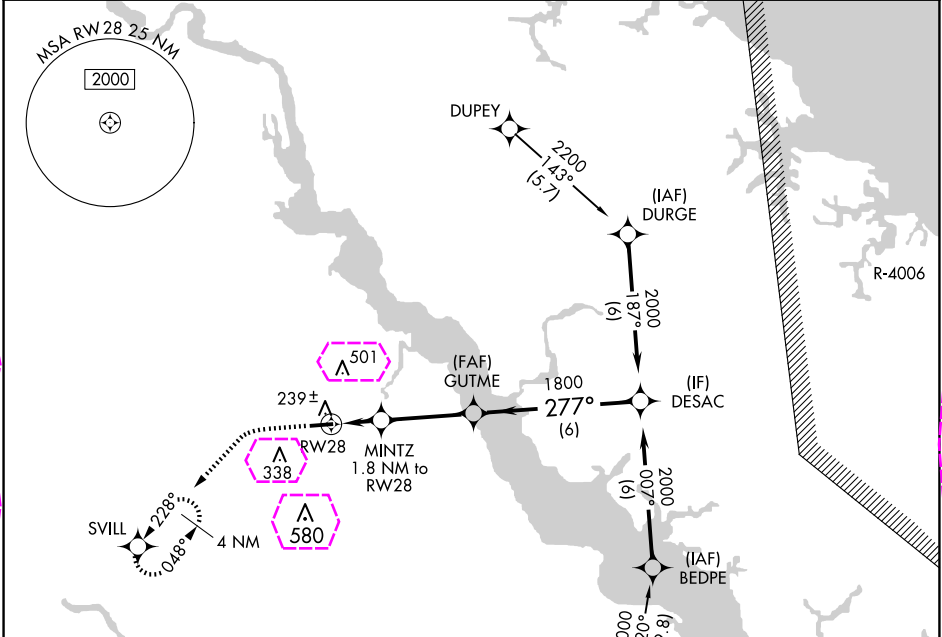
WAAS CH <b>99409</b> <b>W28A</b>	APP CRS <b>277°</b>	Rwy Idg <b>4300</b> TDZE <b>129</b> Apt Elev <b>135</b>
--	------------------------	--

RNAV (GPS) RWY 28

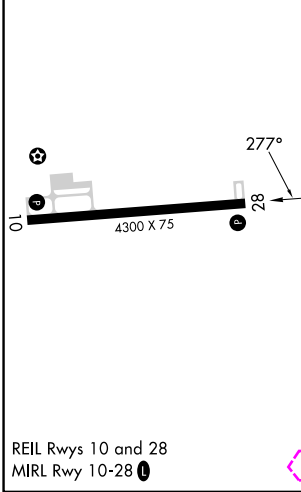
TAPPAHANNOCK/ESSEX COUNTY (XSA)

RNP APCH - GPS.	MISSED APPROACH: Climb to 600 then climbing left turn to 2000 direct SVILL and hold.
For uncompensated Baro-VNAV systems, LNAV/VNAV NA below -15°C or above 54°C.	

AWOS-3 <b>125.775</b>	POTOMAC APP CON <b>126.4 282.375</b>	UNICOM <b>122.8 (CTAF) 0</b>
--------------------------	---	---------------------------------



ELEV <b>135</b>	TDZE <b>129</b>
-----------------	-----------------



600	2000	SVILL		
GP 3.00° TCH 40				
CATEGORY	A	B	C	D
LPV DA	379-1	250 (300-1)	NA	
LNAV/VNAV DA	402-1	273 (300-1)	NA	
LNAV MDA	500-1	371 (400-1)	NA	
<b>CIRCLING</b>	580-1 445 (500-1)	640-1 505 (600-1)	820-2 685 (700-2)	NA

TAPPAHANNOCK, VIRGINIA

Amdt 2A 10AUG23

TAPPAHANNOCK/ESSEX COUNTY (XSA)

37°52'N-76°54'W

RNAV (GPS) RWY 28

TAPPAHANNOCK, VIRGINIA

AL-10331 (FAA)

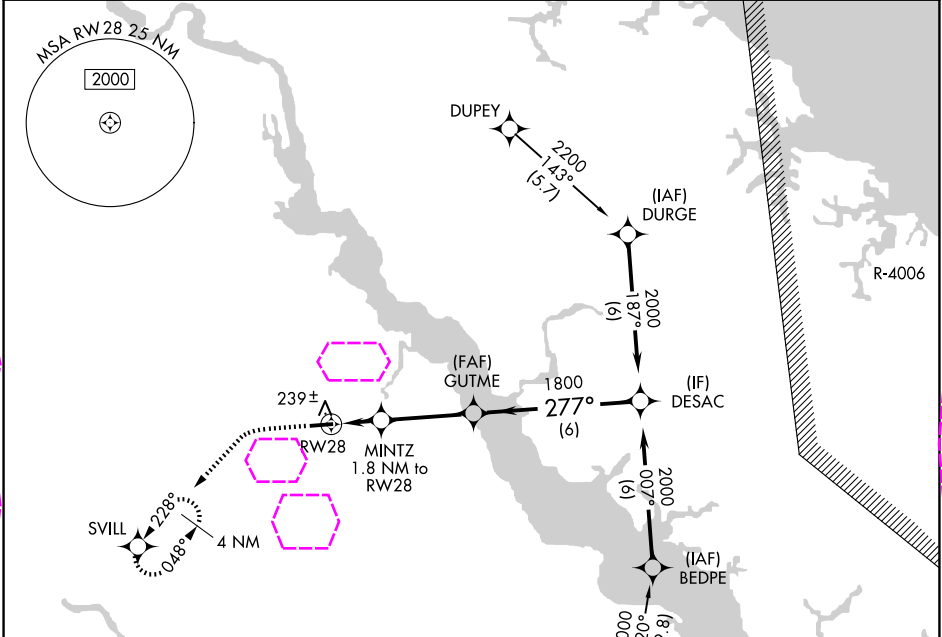
25219

WAAS CH <b>99409</b> <b>W28A</b>	APP CRS <b>277°</b>	Rwy Ldg TDZE Apt Elev	<b>4300</b> <b>129</b> <b>135</b>
--	------------------------	-----------------------------	---

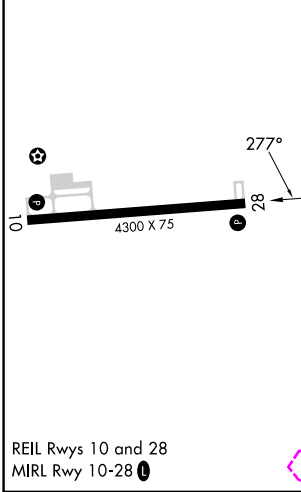
**RNAV (GPS) RWY 28**  
TAPPAHANNOCK/ESSEX COUNTY (XSA)

RNP APCH - GPS.	MISSED APPROACH: Climb to 600 then climbing left turn to 2000 direct SVILL and hold.
For uncompensated Baro-VNAV systems, LNAV/VNAV NA below -15°C or above 54°C.	

AWOS-3 <b>125.775</b>	POTOMAC APP CON <b>126.4 282.375</b>	UNICOM <b>122.8 (CTAF) 0</b>
--------------------------	---	---------------------------------



ELEV 135	TDZE 129
----------	----------



600	2000	SVILL			
			GUTME	DESAC	
			1800	2000	
			MINTZ 1.8 NM to RW28		
			1 NM to RW28		
			RW28		
			740	1800	
			1 NM	0.8 NM	3.3 NM
					6 NM
CATEGORY	A	B	C	D	
LPV DA	379-1	250 (300-1)	NA	NA	
LNAV/VNAV DA	402-1	273 (300-1)	NA	NA	
LNAV MDA	500-1	371 (400-1)	NA	NA	
CIRCLING	580-1 445 (500-1)	640-1 505 (600-1)	820-2 685 (700-2)	NA	

TAPPAHANNOCK, VIRGINIA  
Amdt 2A 10AUG23

TAPPAHANNOCK/ESSEX COUNTY (XSA)  
37°52'N-76°54'W  
**RNAV (GPS) RWY 28**

NE-3, 07 AUG 2025 to 04 SEP 2025

NE-3, 07 AUG 2025 to 04 SEP 2025