

APP CRS	Rwy Ldg	NA
224°	TDZE	NA
	Apt Elev	1154

RNAV (GPS)-A

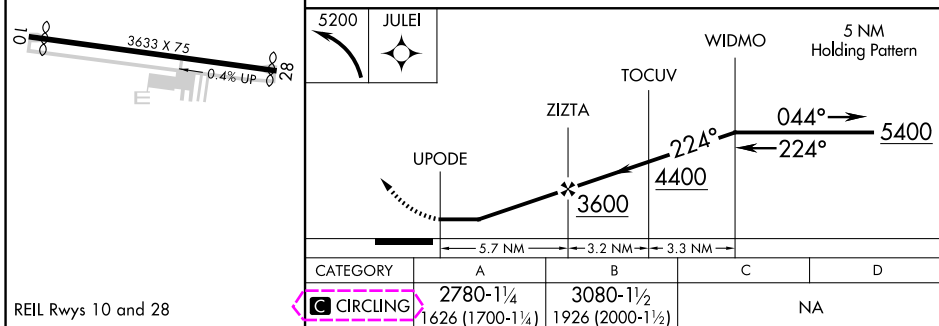
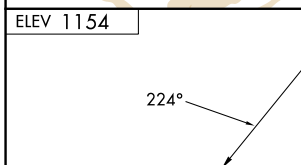
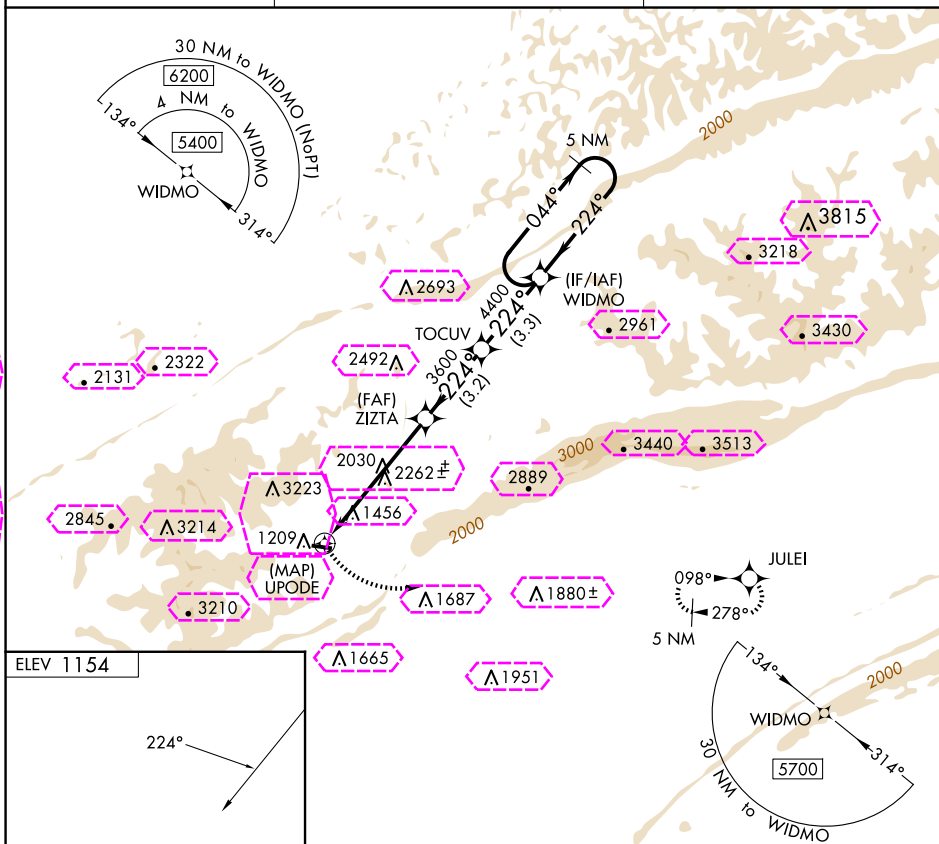
MIDDLESBORO/BELL COUNTY (1A6)

T DME/DME RNP-0.3 NA. When local altimeter setting not received,
A use London altimeter setting: increase all MDA 100 feet. Procedure
✶ NA at night. Helicopter visibility reduction below 1 SM NA.

MISSED APPROACH: Climbing left turn to 5200 direct JULE and hold.

AWOS-3
119.425

INDIANAPOLIS CENTER
124-625 371-925

UNICOM
122.8 (CTAF)

MIDDLESBORO, KENTUCKY
Amdt 1 21JUL16

MIDDLESBORO/BELL COUNTY (1A6)




RNAV (GPS)-A

36°37'N-83°44'W

APP CRS	Rwy Ldg	NA
224°	TDZE	NA
	Apt Elev	1154

RNAV (GPS)-A

MIDDLESBORO/BELL COUNTY (1A6)

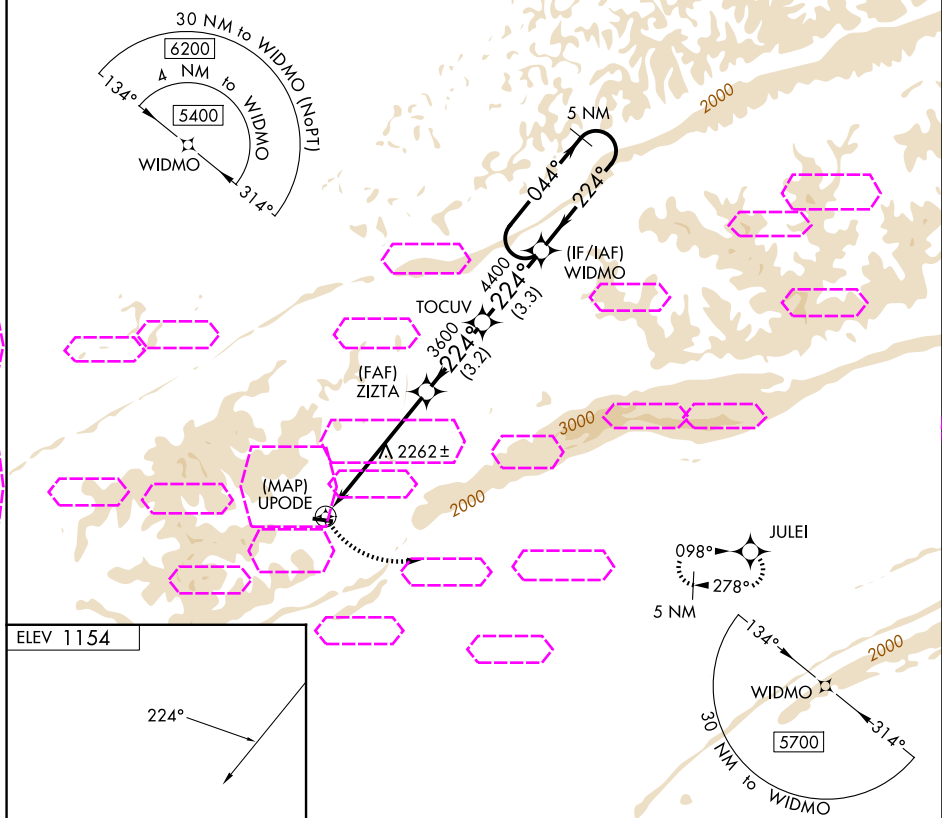
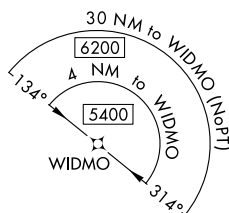
   -13°C DME/DME RNP-0.3 NA. When local altimeter setting not received, use London altimeter setting: increase all MDA 100 feet. Procedure NA at night. Helicopter visibility reduction below 1 SM NA.

MISSED APPROACH: Climbing left turn to 5200 direct JULE and hold.

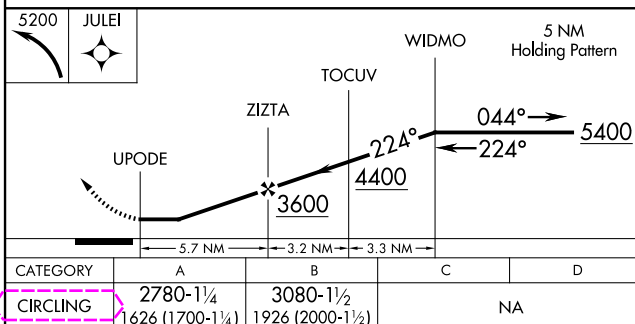
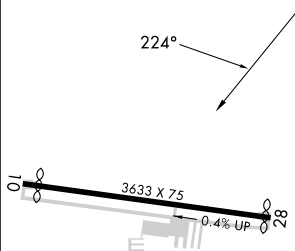
AWOS-3
119.425

INDIANAPOLIS CENTER
124.625 371.925

UNICOM
122.8 (CTAF)



ELEV 1154



REIL Rwys 10 and 28

MIDDLESBORO, KENTUCKY
Amdt 1 21JUL16

MIDDLESBORO/BELL COUNTY (1A6)

RNAV (GPS)-A

36°37'N-83°44'W

SE-1, 07 AUG 2025 to 04 SEP 2025