

WILLIAMSBURG, KENTUCKY

AL-10311 (FAA)

25163

WAAS CH 53312 W02A	APP CRS 023°	Rwy Ldg TDZE 1168 Apt Elev 1178
--	------------------------	---

RNAV (GPS) RWY 2

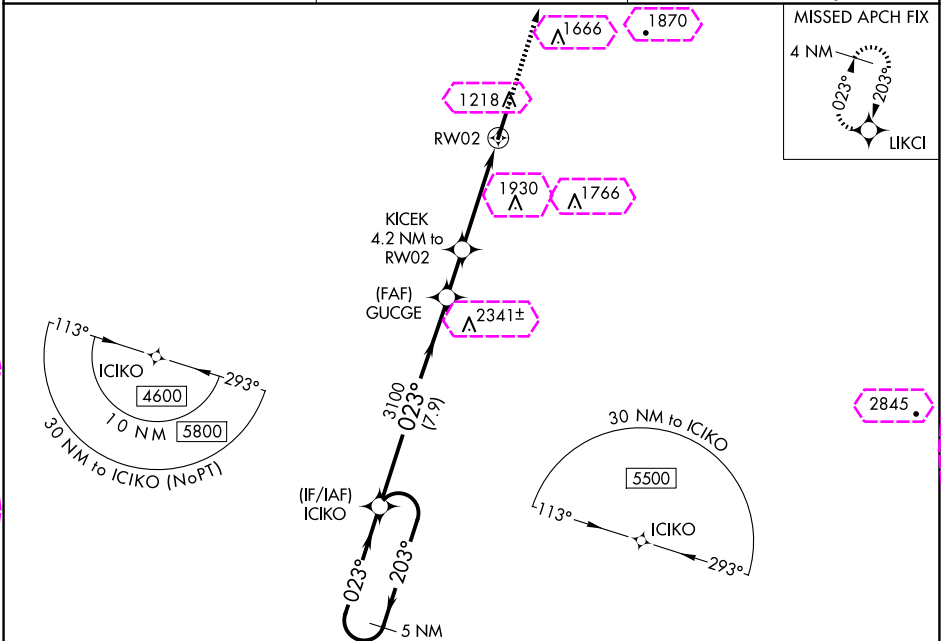
WILLIAMSBURG-WHITLEY COUNTY (BYL)

NA
-16°C

When local altimeter setting not received, use London altimeter setting and increase DA 48 feet, MDA 60 feet and LPV all Cats visibility 1/2 mile. DME/DME RNP-0.3 NA.
Visibility reduction by helicopters NA. VDP NA with London altimeter setting.

MISSED APPROACH:
Climb to 4000 direct LIKCI and hold.

AWOS-3 119.575	INDIANAPOLIS CENTER 124.625 371.925	UNICOM 122.7 (CTAF) 0
--------------------------	---	---------------------------------



ELEV 1178 TDZE 1168

3057
4000 LIKCI
* LNAV only.

5 NM Holding Pattern ICIKO

4600 ← 203°
GP 3.00° TCH 35

3100

GUCGE KICEK 4.2 NM to RW02

* 3.3 NM to RW02

RW02

7.9 NM 1.8 NM 0.9 NM 3.3 NM

CATEGORY	A	B	C	D
LPV DA	1418 7/8 250 (300-7/8)			
LNAV MDA	2300-1 1/4 1132 (1200-1 1/4)	2300-1 1/2 1132 (1200-1 1/2)	2300-3	1132 (1200-3)
CIRCLING	2300-1 1/4 1122 (1200-1 1/4)	2300-1 1/2 1122 (1200-1 1/2)	2300-3	1122 (1200-3)

3057
4000 LIKCI
* LNAV only.

0.48% UP

MIRL Rwy 2-20 0
REIL Rws 2 and 20 0

WILLIAMSBURG, KENTUCKY
Amdt 2A 29MAY14

WILLIAMSBURG-WHITLEY COUNTY (BYL)
36°48'N-84°12'W

RNAV (GPS) RWY 2

WILLIAMSBURG, KENTUCKY

AL-10311 (FAA)

25219

WAAS CH 53312 W02A	APP CRS 023°	Rwy Ldg TDZE 1168 Apt Elev 1178
--	------------------------	---

RNAV (GPS) RWY 2

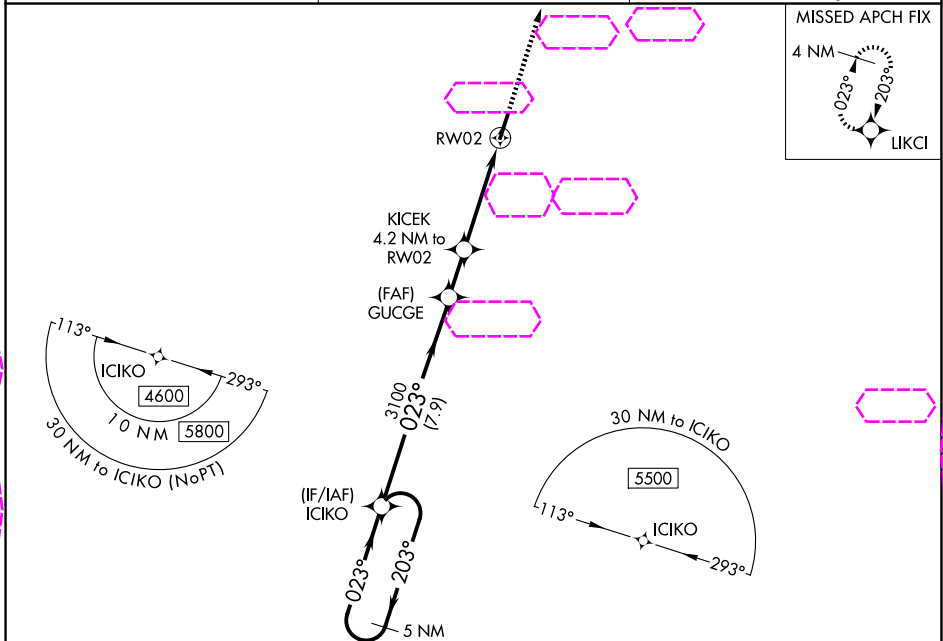
WILLIAMSBURG-WHITLEY COUNTY (BYL)

NA
-16°C

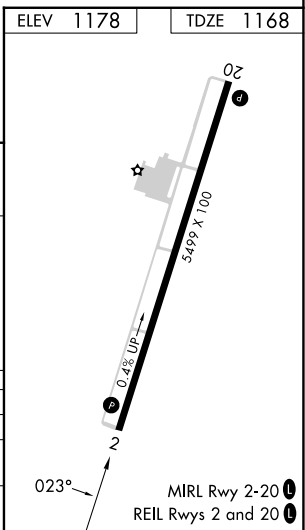
When local altimeter setting not received, use London altimeter setting and increase DA 48 feet, MDA 60 feet and LPV all Cats visibility 1/2 mile. DME/DME RNP-0.3 NA.
Visibility reduction by helicopters NA. VDP NA with London altimeter setting.

MISSED APPROACH:
Climb to 4000 direct LIKCI and hold.

AWOS-3 119.575	INDIANAPOLIS CENTER 124.625 371.925	UNICOM 122.7 (CTAF) 0
--------------------------	---	---------------------------------



ELEV 1178		TDZE 1168	
3057			
5 NM Holding Pattern ICIKO			
4600 ← 203° → 023° → 023° → 3100			
GP 3.00° TCH 35			
3100			
*2520			
7.9 NM 1.8 NM 0.9 NM 3.3 NM			
KICEK 4.2 NM to RWY 2			
*3.3 NM to RWY 2			
RWY 2			
* LNAV only.			
CATEGORY	A	B	C
LPV DA	1418 7/8 250 (300-7/8)		
LNAV MDA	2300-1 1/4 1132 (1200-1 1/4)	2300-1 1/2 1132 (1200-1 1/2)	2300-3 1132 (1200-3)
CIRCLING	2300-1 1/4 1122 (1200-1 1/4)	2300-1 1/2 1122 (1200-1 1/2)	2300-3 1122 (1200-3)



WILLIAMSBURG, KENTUCKY
Amdt 2A 29MAY14

WILLIAMSBURG-WHITLEY COUNTY (BYL)
36°48'N-84°12'W

RNAV (GPS) RWY 2