

WILLIAMSBURG, KENTUCKY

AL-10311 (FAA)

25163

WAAS CH 70403 W20A	APP CRS 203°	Rwy Ldg TDZE 1178 Apt Elev 1178
--	------------------------	---

RNAV (GPS) RWY 20

WILLIAMSBURG-WHITLEY COUNTY (BYL)

RNP APCH.

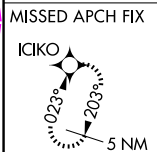
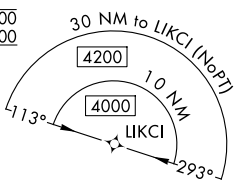
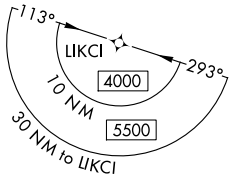
⚠ Rwy 20 helicopter visibility reduction below ¾ SM NA.
For uncompensated Baro-VNAV systems,
LNAV/VNAV NA below -17°C or above 54°C.
❄ -16°C

MISSED APPROACH: Climb
to 4900 direct ICKO and hold,
continue climb-in-hold 4900.

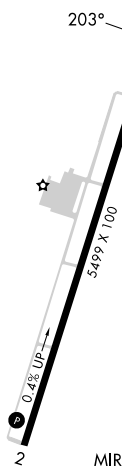
AWOS-3
119.575

INDIANAPOLIS CENTER
124.625 371.925

UNICOM
122.7 (CTAF) 0



ELEV 1178	TDZE 1178
-----------	-----------



4900 ICKO

VGSI and RNAV glidepath not coincident (VGSI Angle 3.17/TCH 30).

*LNAV only.

NUYV 2.8 NM to RW20

JUBKA 3100

LIKCI 4 NM Holding Pattern

023° → 6000
← 203° 4000

GP 3.00° TCH 45

2100*

1.4 1.4 3.1 NM 7 NM

CATEGORY	A	B	C	D
LPV DA	1651-1⅜		473 (500-1⅜)	
LNAV/VNAV DA	1670-1⅝		492 (500-1⅝)	
LNAV MDA	1680-1	502 (600-1)	1680-1⅜	502 (600-1⅜)
CIRCLING	1760-1 582 (600-1)	1860-1 682 (700-1)	2240-3 1062 (1100-3)	2260-3 1082 (1100-3)

SE-1, 10 JUL 2025 to 07 AUG 2025

SE-1, 10 JUL 2025 to 07 AUG 2025

WILLIAMSBURG, KENTUCKY

AL-10311 (FAA)

25219

WAAS CH 70403 W20A	APP CRS 203°	Rwy Ldg TDZE 1178 Apt Elev 1178
--	------------------------	---

RNAV (GPS) RWY 20

WILLIAMSBURG-WHITLEY COUNTY (BYL)

RNP APCH.

▼

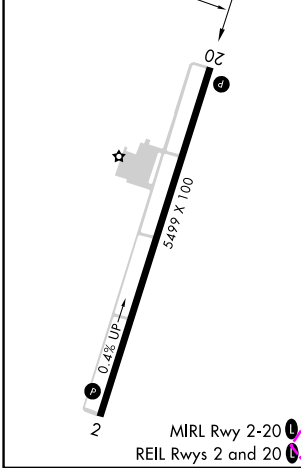
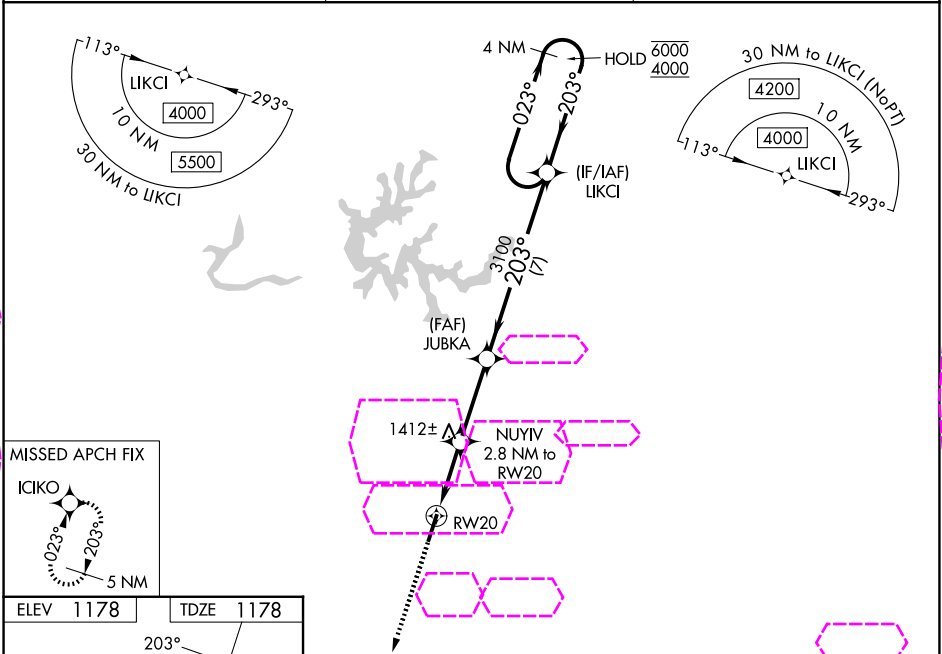
▲

❄️ -16°C

Rwy 20 helicopter visibility reduction below ¾ SM NA.
For uncompensated Baro-VNAV systems,
LNAV/VNAV NA below -17°C or above 54°C.

MISSED APPROACH: Climb
to 4900 direct ICIKO and hold,
continue climb-in-hold 4900.

AWOS-3 119.575	INDIANAPOLIS CENTER 124.625 371.925	UNICOM 122.7 (CTAF) 0
--------------------------	---	---------------------------------



4900	ICIKO	VGSI and RNAV glidepath not coincident (VGSI Angle 3.17/TCH 30).		4 NM Holding Pattern	
*LNAV only.		NUYIV 2.8 NM to RW20	JUBKA 3100	LIKCI	
* 1.4 NM to RW20				023° → 6000 ← 203° 4000	
RW20		2100*	3100		GP 3.00° TCH 45
1.4 1.4		3.1 NM	7 NM		
CATEGORY	A	B	C	D	
LPV DA	1651-1 $\frac{3}{8}$ 473 (500-1 $\frac{3}{8}$)				
LNAV/ VNAV DA	1670-1 $\frac{5}{8}$ 492 (500-1 $\frac{5}{8}$)				
LNAV MDA	1680-1	502 (600-1)	1680-1 $\frac{3}{8}$	502 (600-1 $\frac{3}{8}$)	
CIRCLING	1760-1 582 (600-1)	1860-1 682 (700-1)	2240-3 1062 (1100-3)	2260-3 1082 (1100-3)	

WILLIAMSBURG, KENTUCKY

WILLIAMSBURG-WHITLEY COUNTY (BYL)

Amdt 1C 22APR21

36°48'N-84°12'W

RNAV (GPS) RWY 20