




LOC/DME I-BYL 108.3 Chan 20	APP CRS 200°	Rwy Ldg 5499 TDZE 1178 Apt Elev 1178
-------------------------------------------------	------------------------	-----------------------------------------------------------------

LOC RWY 20

WILLIAMSBURG-WHITLEY COUNTY (BYL)

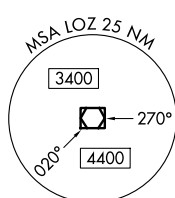
DME required.

 Rwy 20 helicopter visibility reduction below $\frac{3}{4}$ SM NA. VDP NA when using London
 altimeter setting. When local altimeter setting not received, use London altimeter
 -16°C setting and increase all MDAs 60 feet and S-20 Cats C/D visibility $\frac{1}{8}$ SM.

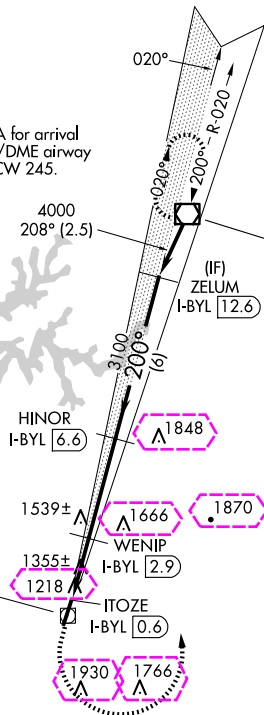
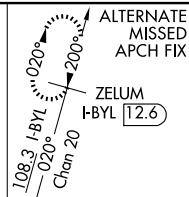
MISSED APPROACH: Climb to 1800 then climbing left turn to 4000 direct LOZ VOR/DME and hold.


AWOS-3
119.575

INDIANAPOLIS CENTER
124.625 371.925

UNICOM
122.7 (CTAF) 

Procedure NA for arrival
on LOZ VOR/DME airway
radials 174 CW 245.

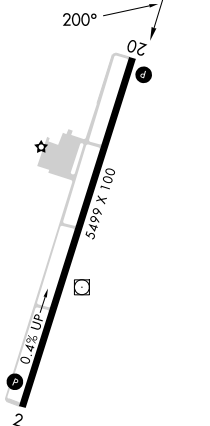


IAF
LONDON
116.55 LOZ 
Chan 112 (Y)

LOCALIZER 108.3
I-BYL $\frac{1}{2} \frac{1}{2} \frac{1}{2} -$
Chan 20
LOC offset 2.88°

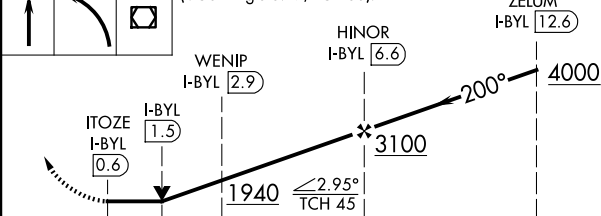
ELEV 1178

TDZE 1178



MIRL Rwy 2-20 **L**
REIL Rwys 2 and 20 **L**

1800	4000	LOZ	VGSI and descent angles not coincident (VGSI Angle 3.17/TCH 30).
------	------	-----	------------------------------------------------------------------



	1 NM	1.3 NM	3.7 NM	6 NM	
CATEGORY	A	B	C	D	
S-20	1740-1	562 (600-1)	1740-1 ⁵ / ₈	562 (600-1 ⁵ / ₈)	
CIRCLING	1760-1 582 (600-1)	1860-1 682 (700-1)	2240-3 1062 (1100-3)	2260-3 1082 (1100-3)	

WILLIAMSBURG, KENTUCKY
Orig-E 07OCT21

WILLIAMSBURG-WHITLEY COUNTY (BYL)

36°48'N-84°12'W

LOC RWY 20

SE-1, 10 JUL 2025 to 07 AUG 2025

SE-1, 10 JUL 2025 to 07 AUG 2025

WILLIAMSBURG, KENTUCKY

AL-10311 (FAA)

25219

LOC/DME I-BYL	APP CRS	Rwy Ldg	5499
108.3	200°	TDZE	1178
Chan 20		Apt Elev	1178

LOC RWY 20

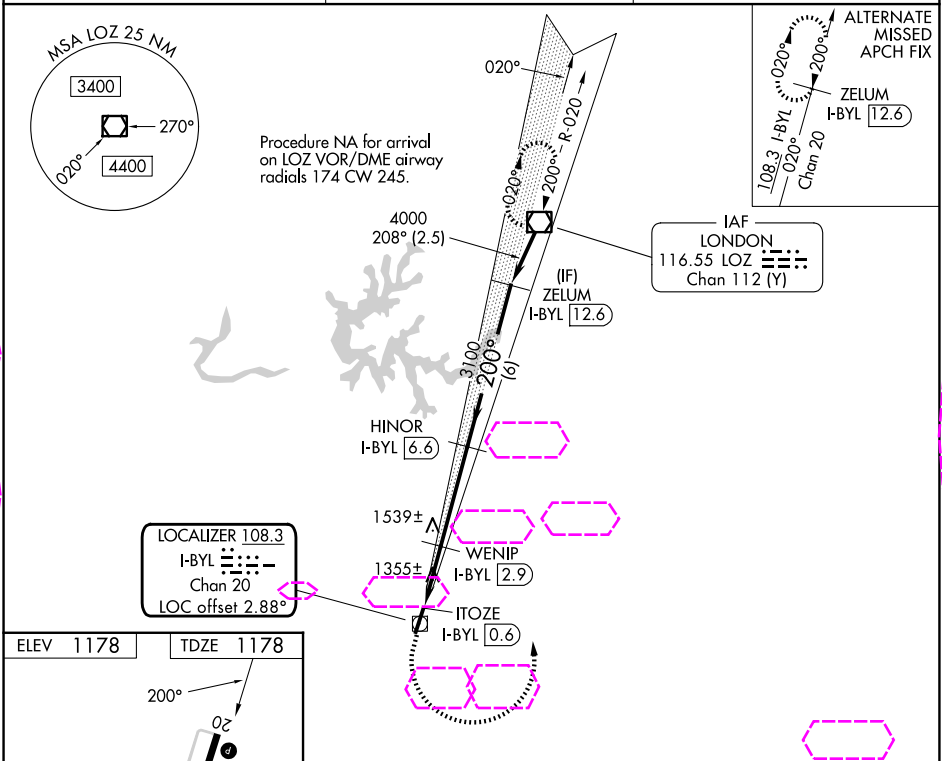
WILLIAMSBURG-WHITLEY COUNTY (BYL)

DME required.

Rwy 20 helicopter visibility reduction below $\frac{3}{4}$ SM NA. VDP NA when using London altimeter setting. When local altimeter setting not received, use London altimeter setting and increase all MDAs 60 feet and S-20 Cats C/D visibility $\frac{1}{2}$ SM.

MISSED APPROACH: Climb to 1800 then climbing left turn to 4000 direct LOZ VOR/DME and hold.

AWOS-3 119.575	INDIANAPOLIS CENTER 124.625 371.925	UNICOM 122.7 (CTAF)
-------------------	----------------------------------------	------------------------



CATEGORY	A	B	C	D
S-20	1740-1	562 (600-1)	1740-1 $\frac{5}{8}$	562 (600-1 $\frac{5}{8}$)
CIRCLING	1760-1 582 (600-1)	1860-1 682 (700-1)	2240-3 1062 (1100-3)	2260-3 1082 (1100-3)

WILLIAMSBURG, KENTUCKY

Orig-E 07OCT21

WILLIAMSBURG-WHITLEY COUNTY (BYL)

36°48'N-84°12'W

LOC RWY 20

SE-1, 07 AUG 2025 to 04 SEP 2025

SE-1, 07 AUG 2025 to 04 SEP 2025