

(YODUH1.YODUH) 24025

AL-10309 (FAA)

BOERNE STAGE AIRFIELD (5C1)

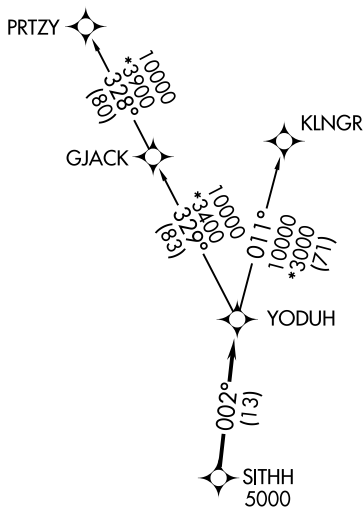
YODUH ONE DEPARTURE (RNAV)

SAN ANTONIO, TEXAS

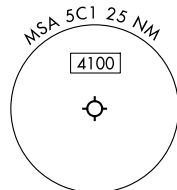
RNAV 1 - DME/DME IRU or GPS.

**TOP ALTITUDE:
ASSIGNED BY ATC**SAN ANTONIO DEP CON
125.1 307.0

RADAR required.

TAKEOFF MINIMUMSRwy 17: Standard with minimum climb
of 210'/NM to 2200.Rwy 35: Standard with minimum climb
of 250'/NM to 3800.NOTE: Aircraft destined for airports north/northeast of
DFW terminal area must file the KLNGR Transition.

NOTE: Chart not to scale.



DEPARTURE ROUTE DESCRIPTION

TAKEOFF RUNWAY 17: Climb on heading 169° or as assigned by ATC, for vectors to
SITHH, thence . . .TAKEOFF RUNWAY 35: Climb on heading 349° or as assigned by ATC, for vectors to
SITHH, thence . . .

. on track 002° to YODUH, then on Transition. Maintain ATC assigned altitude.

KLNGR TRANSITION (YODUH1.KLNGR)PRTZY TRANSITION (YODUH1.PRTZY)

YODUH ONE DEPARTURE (RNAV)

(YODUH1.YODUH) 25JAN24

SAN ANTONIO, TEXAS
BOERNE STAGE AIRFIELD (5C1)

(YODUH2.YODUH) 25219

AL-10309 (FAA)

BOERNE STAGE AIRFIELD (5C1)
SAN ANTONIO, TEXAS

YODUH TWO DEPARTURE (RNAV)

SAN ANTONIO DEP CON
125.1 307.0

RNAV 1 - DME/DME IRU or GPS.

RADAR required for non-GPS equipped aircraft.
RADAR required.

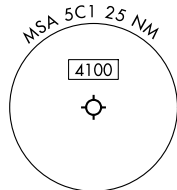
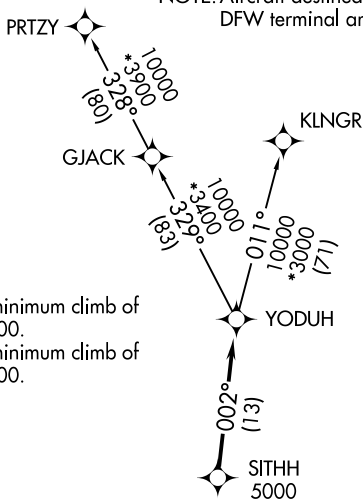
**TOP ALTITUDE:
ASSIGNED BY ATC**

NOTE: Aircraft destined for airports north/northeast of
DFW terminal area must file the KLNGR Transition.

TAKEOFF MINIMUMS

Rwy 17: Standard with minimum climb of
210'/NM to 2200.

Rwy 35: Standard with minimum climb of
250'/NM to 3800.



NOTE: Chart not to scale.

DEPARTURE ROUTE DESCRIPTION

TAKEOFF RUNWAY 17: Climb on heading 169° or as assigned by ATC, for vectors
to SITHH, thence. . .

TAKEOFF RUNWAY 35: Climb on heading 349° or as assigned by ATC, for vectors
to SITHH, thence. . .

. . . on track 002° to YODUH, then on transition. Maintain ATC assigned altitude.

Expect filed altitude 10 minutes after departure.

KLNGR TRANSITION (YODUH2.KLNGR)

PRTZY TRANSITION (YODUH2.PRTZY)

YODUH TWO DEPARTURE (RNAV)
(YODUH2.YODUH) 07AUG25

SAN ANTONIO, TEXAS
BOERNE STAGE AIRFIELD (5C1)

SC-3, 07 AUG 2025 to 04 SEP 2025

SC-3, 07 AUG 2025 to 04 SEP 2025