

(TJANO1.TJANO) 24025

AL-10309 (FAA)

BOERNE STAGE AIRFIELD (5C1)

TJANO ONE DEPARTURE (RNAV)

SAN ANTONIO, TEXAS

SAN ANTONIO DEP CON
125.1 307.0

RNAV 1 - DME/DME IRU or GPS.

RADAR required.

**TOP ALTITUDE:
ASSIGNED BY ATC**NOTE: For non-GPS equipped aircraft,
THX and SAT DME must be operational.LVACA
5000TAKEOFF MINIMUMSRwy 17: Standard with minimum climb of
210'/NM to 2200.Rwy 35: Standard with minimum climb of
250'/NM to 3800.

TJANO

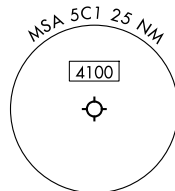
10000
*2500
206°
(37)

TEEPY

(30)
10000
*2300
196°
187°
10000
*1900
(31)

ZANNI

KAHAN

**DEPARTURE ROUTE DESCRIPTION**TAKEOFF RUNWAY 17: Climb on heading 169° or as
assigned by ATC, for vectors to LVACA, thence . . .TAKEOFF RUNWAY 35: Climb on heading 349° or as
assigned by ATC, for vectors to LVACA, thence on track 205° to TJANO, then on Transition.
Maintain ATC assigned altitude.KAHAN TRANSITION (TJANO1.KAHAN)ZANNI TRANSITION (TJANO1.ZANNI)

Note: Chart not to scale.

TJANO ONE DEPARTURE (RNAV)

(TJANO1.TJANO) 25JAN24

SAN ANTONIO, TEXAS
BOERNE STAGE AIRFIELD (5C1)

SC-3, 10 JUL 2025 to 07 AUG 2025

SC-3, 10 JUL 2025 to 07 AUG 2025

(TJANO2.TJANO) 25219

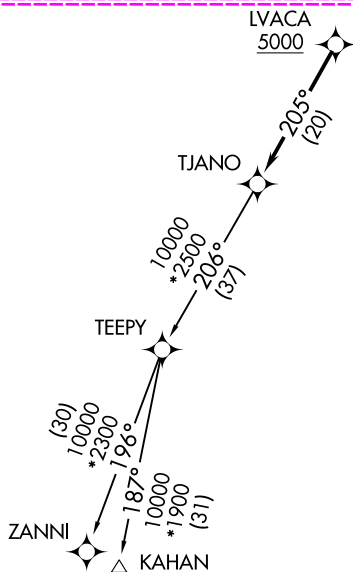
AL-10309 (FAA)

BOERNE STAGE AIRFIELD (5C1)
SAN ANTONIO, TEXAS

TJANO TWO DEPARTURE (RNAV)

SAN ANTONIO DEP CON
125.1 307.0

RNAV 1 - DME/DME IRU or GPS.

RADAR required for non-GPS equipped aircraft.
RADAR required.**TOP ALTITUDE:
ASSIGNED BY ATC**TAKEOFF MINIMUMSRwy 17: Standard with minimum climb of
210' /NM to 2200.Rwy 35: Standard with minimum climb of
250' /NM to 3800.

NOTE: Chart not to scale.



DEPARTURE ROUTE DESCRIPTION

TAKEOFF RUNWAY 17: Climb on heading 169° or as assigned by ATC, for vectors to LVACA, thence. . .TAKEOFF RUNWAY 35: Climb on heading 349° or as assigned by ATC, for vectors to LVACA, thence. on track 205° to TJANO, then on transition. Maintain ATC assigned altitude.
Expect filed altitude 10 minutes after departure.KAHAN TRANSITION (TJANO2.KAHAN)ZANNI TRANSITION (TJANO2.ZANNI)

TJANO TWO DEPARTURE (RNAV)

(TJANO2.TJANO) 07AUG25

SAN ANTONIO, TEXAS
BOERNE STAGE AIRFIELD (5C1)

SC-3, 07 AUG 2025 to 04 SEP 2025

SC-3, 07 AUG 2025 to 04 SEP 2025