

SAN ANTONIO, TEXAS

AL-10309 (FAA)

24025

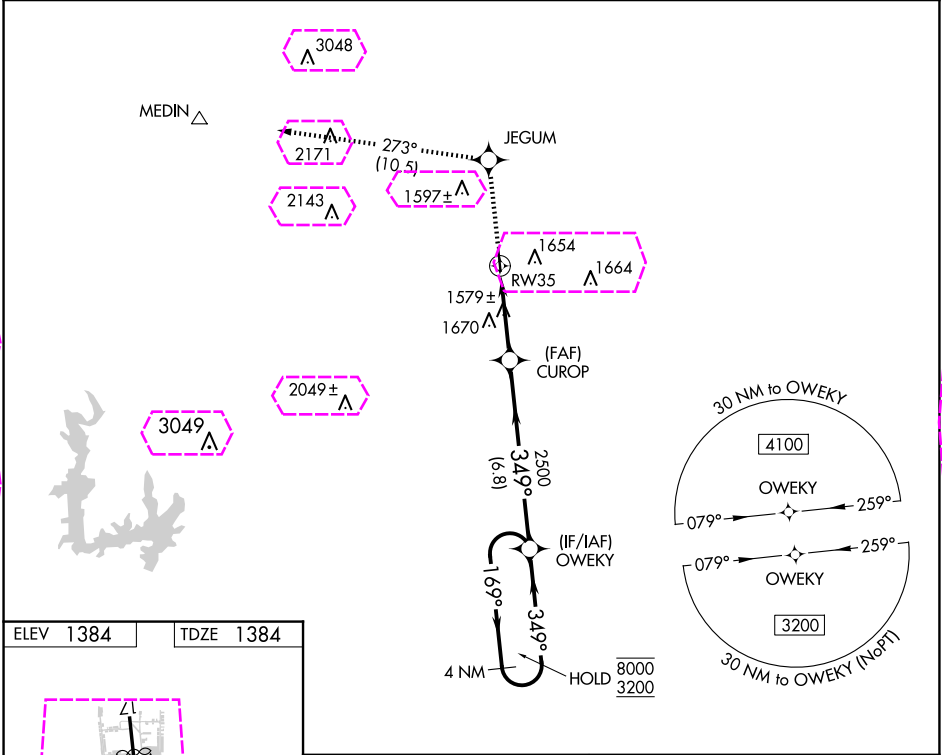
WAAS CH <b>69428</b> <b>W35A</b>	APP CRS <b>349°</b>	Rwy Idg TDZE Apt Elev	<b>3920</b> <b>1384</b> <b>1384</b>
--	------------------------	-----------------------------	---

# RNAV (GPS) RWY 35

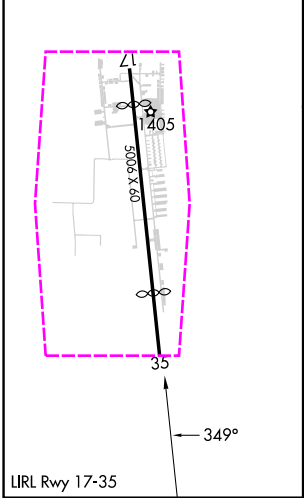
BOERNE STAGE AIRFIELD (5C1)

RNP APCH-GPS.	MISSED APPROACH: Climb to 4100 direct JEGUM and on track 273° to MEDIN.
<p>▼ Rwy 35 helicopter visibility reduction below 1 SM NA. When local altimeter setting not received, use San Antonio Intl altimeter setting and increase all MDAs 120 feet.</p> <p>▲</p>	

AWOS-3 <b>118.725</b>	SAN ANTONIO APP CON <b>125.1 307.0</b>	UNICOM <b>123.0</b> (CTAF)
--------------------------	---	-------------------------------



ELEV 1384	TDZE 1384
-----------	-----------



4100	JEGUM	MEDIN				
↑	✦	tr 273°	△			
			CUROP	OWEKY	4 NM Holding Pattern	
			RW35	349°	169° → 8000 ← 349° 3200	
			3.00° TCH 40	2500		
			3.4 NM	6.8 NM		
CATEGORY	A	B	C	D		
LP MDA	1840-1	456 (500-1)	NA			
LNAV MDA	1920-1	536 (600-1)	NA			

SAN ANTONIO, TEXAS  
Amdt 1C 27JAN22

29°43'N-98°42'W

# BOERNE STAGE AIRFIELD (5C1)

## RNAV (GPS) RWY 35

SC-3, 10 JUL 2025 to 07 AUG 2025

SC-3, 10 JUL 2025 to 07 AUG 2025

SAN ANTONIO, TEXAS

AL-10309 (FAA)

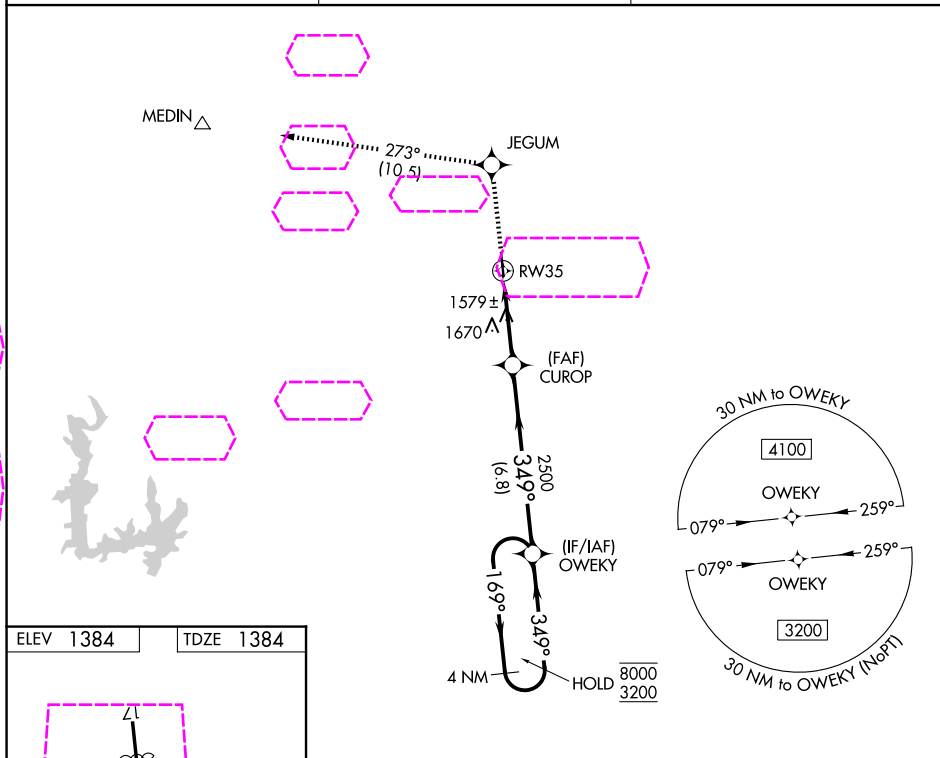
25219

WAAS CH <b>69428</b> <b>W35A</b>	APP CRS <b>349°</b>	Rwy Ldg TDZE Apt Elev	<b>3920</b> <b>1384</b> <b>1384</b>
--	------------------------	-----------------------------	---

# RNAV (GPS) RWY 35

BOERNE STAGE AIRFIELD (5C1)

RNP APCH-GPS.		MISSED APPROACH: Climb to 4100 direct JEGUM and on track 273° to MEDIN.
<div><div><div></div><div></div></div><div>Rwy 35 helicopter visibility reduction below 1 SM NA. When local altimeter setting not received, use San Antonio Intl altimeter setting and increase all MDAs 120 feet.</div></div>		
AWOS-3 118.725	SAN ANTONIO APP CON 125.1 307.0	UNICOM 123.0 (CTAF)



ELEV 1384	TDZE 1384				
		4100	JEGUM	MEDIN	
		↑	★	tr 273°	△
CATEGORY	A	B	C	D	
LP MDA	1840-1	456 (500-1)	NA		
LNAV MDA	1920-1	536 (600-1)	NA		

SAN ANTONIO, TEXAS  
Amdt 1C 27JAN22

29°43'N-98°42'W

BOERNE STAGE AIRFIELD (5C1)  
RNAV (GPS) RWY 35

SC-3, 07 AUG 2025 to 04 SEP 2025

SC-3, 07 AUG 2025 to 04 SEP 2025