

SAN ANTONIO, TEXAS

AL-10309 (FAA)

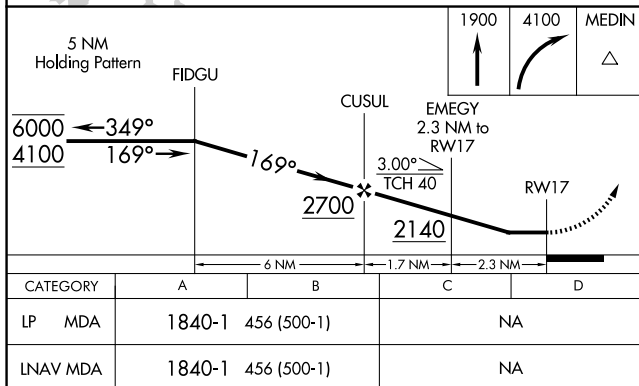
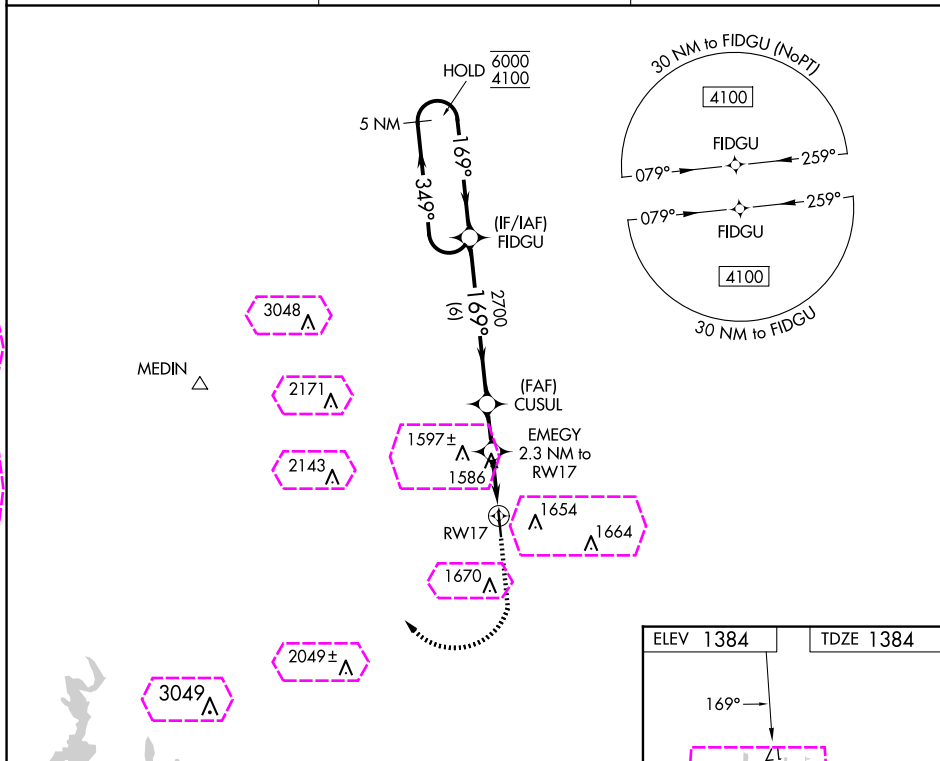
24025

WAAS CH 50528 W17A	APP CRS 169°	Rwy Idg TDZE Apt Elev	4377 1384 1384
--	------------------------	-----------------------------	---

RNAV (GPS) RWY 17

BOERNE STAGE AIRFIELD (5C1)

RNP APCH-GPS.		MISSED APPROACH: Climb to 1900 then climbing right turn to 4100 direct MEDIN.
AWOS-3 118.725	SAN ANTONIO APP CON 125.1 307.0	UNICOM 123.0 (CTAF)



SAN ANTONIO, TEXAS

Amdt 1D 27JAN22

29°43'N-98°42'W

BOERNE STAGE AIRFIELD (5C1)

RNAV (GPS) RWY 17

SC-3, 10 JUL 2025 to 07 AUG 2025

SC-3, 10 JUL 2025 to 07 AUG 2025

SAN ANTONIO, TEXAS

AL-10309 (FAA)

25219

WAAS CH 50528 W17A	APP CRS 169°	Rwy Ldg TDZE Apt Elev	4377 1384 1384
--	------------------------	-----------------------------	---

RNAV (GPS) RWY 17

BOERNE STAGE AIRFIELD (5C1)

RNP APCH-GPS.

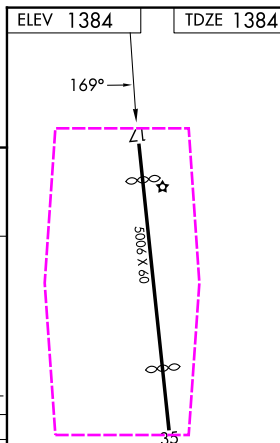
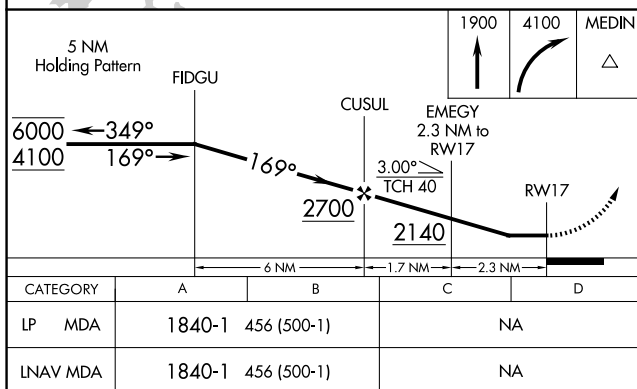
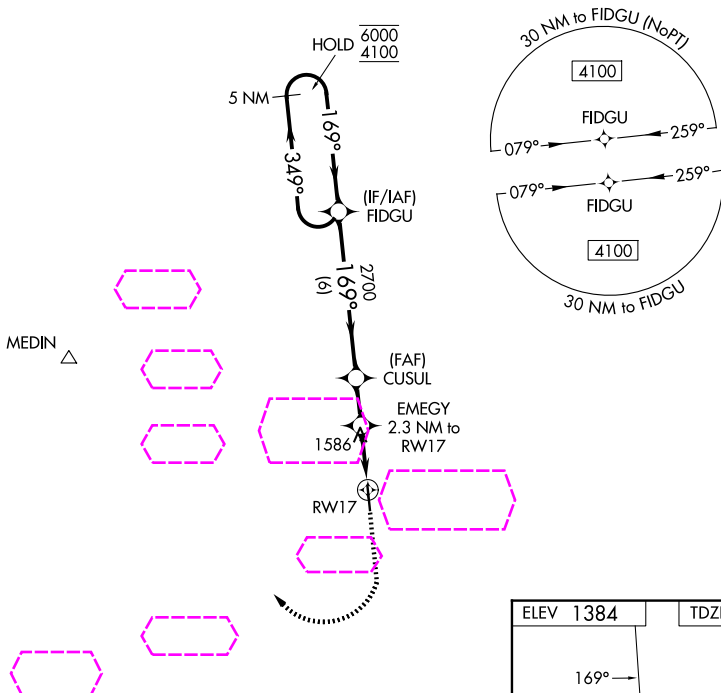
- ▼ Rwy 17 helicopter visibility reduction below 1 SM NA. When local altimeter setting not received, use KSAT altimeter setting and increase all MDAs 120 feet.
- ▲

MISSED APPROACH: Climb to 1900 then climbing right turn to 4100 direct MEDIN.

AWOS-3
118.725

SAN ANTONIO APP CON
125.1 307.0

UNICOM
123.0 (CTAF)



URL Rwy 17-35

SAN ANTONIO, TEXAS

Amdt 1D 27JAN22

29°43'N-98°42'W

BOERNE STAGE AIRFIELD (5C1)

RNAV (GPS) RWY 17

SC-3, 07 AUG 2025 to 04 SEP 2025

SC-3, 07 AUG 2025 to 04 SEP 2025