

(ALISS6.ALISS) 24025

AL-10309 (FAA)

BOERNE STAGE AIRFIELD (5C1)

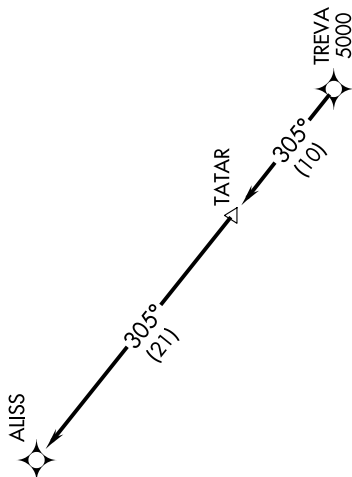
SAN ANTONIO, TEXAS

ALISS SIX DEPARTURE (RNAV)

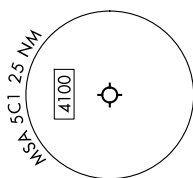
SAN ANTONIO DEP CON
125.1 307.0TOP ALTITUDE:
ASSIGNED BY ATC

RNAV 1 - GPS.

RADAR required.



NOTE: Chart not to scale.



TAKEOFF MINIMUMS

Rwy 17: Standard with minimum climb of 210'/NM to 2200.

Rwy 35: Standard with minimum climb of 250'/NM to 3800.

DEPARTURE ROUTE DESCRIPTION

▼ TAKEOFF RUNWAY 17: Climb on heading 169° or as assigned by ATC, for vectors to TREVA, thence . . .

TAKEOFF RUNWAY 35: Climb on heading 349° or as assigned by ATC, for vectors to TREVA, thence . . .

. . . on track 305° to TATAR, then on track 305° to ALISS. Maintain ATC assigned altitude.

SC-3, 10 JUL 2025 to 07 AUG 2025

ALISS SIX DEPARTURE (RNAV)

(ALISS6.ALISS) 25JAN24

SAN ANTONIO, TEXAS

BOERNE STAGE AIRFIELD (5C1)

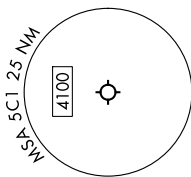
(ALISS7.ALISS) 25219

AL-10309 (FAA)

BOERNE STAGE AIRFIELD (5C1)

ALISS SEVEN DEPARTURE (RNAV)

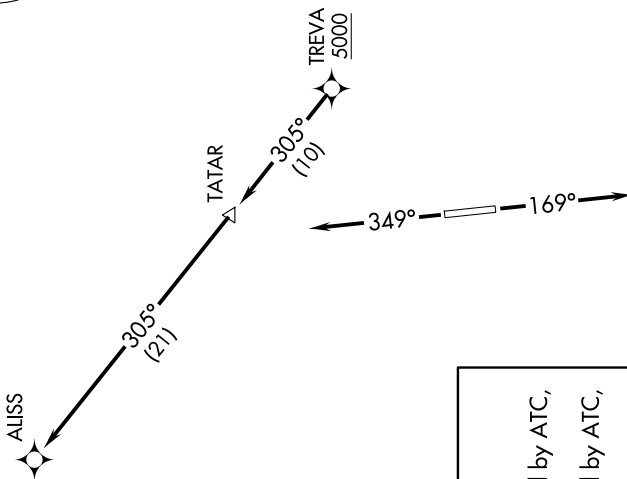
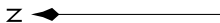
SAN ANTONIO, TEXAS

TOP ALTITUDE:
ASSIGNED BY ATC

NOTE: Chart not to scale.

RNAV 1 - DME/DME/IRU or GPS.
RADAR required for non-GPS equipped aircraft.
RADAR required.

SAN ANTONIO DEP CON
125.1 307.0



TAKEOFF MINIMUMS

Rwy 17: Standard with minimum climb of 210'/NM to 2200.
Rwy 35: Standard with minimum climb of 250'/NM to 3800.

DEPARTURE ROUTE DESCRIPTION

TAKEOFF RUNWAY 17: Climb on heading 169° or as assigned by ATC, for vectors to TREVA, thence. . .

TAKEOFF RUNWAY 35: Climb on heading 349° or as assigned by ATC, for vectors to TREVA, thence. . .

. . . on track 305° to TATAR, then on track 305° to ALISS. Maintain ATC assigned altitude. Expect filed altitude 10 minutes after departure.

SC-3, 07 AUG 2025 to 04 SEP 2025

SC-3, 07 AUG 2025 to 04 SEP 2025

ALISS SEVEN DEPARTURE (RNAV)

(ALISS7.ALISS) 07AUG25

SAN ANTONIO, TEXAS

BOERNE STAGE AIRFIELD (5C1)