

KOBUK, ALASKA

AL-10304 (FAA)

25107

APP CRS Rwy Idg **4020**
080° TDZE **142**
 Apt Elev **142**

RNAV (GPS) RWY 9

KOBUK (OBU) (PAOB)

RNP APCH - GPS.

- ▼ Use Amber altimeter setting. Circling NA north of Rwy 9-27.
 ▲ NA Rwy 9 helicopter visibility reduction below $\frac{3}{4}$ SM NA.
 ☒ -37°C Circling Rwy 27 NA at night.

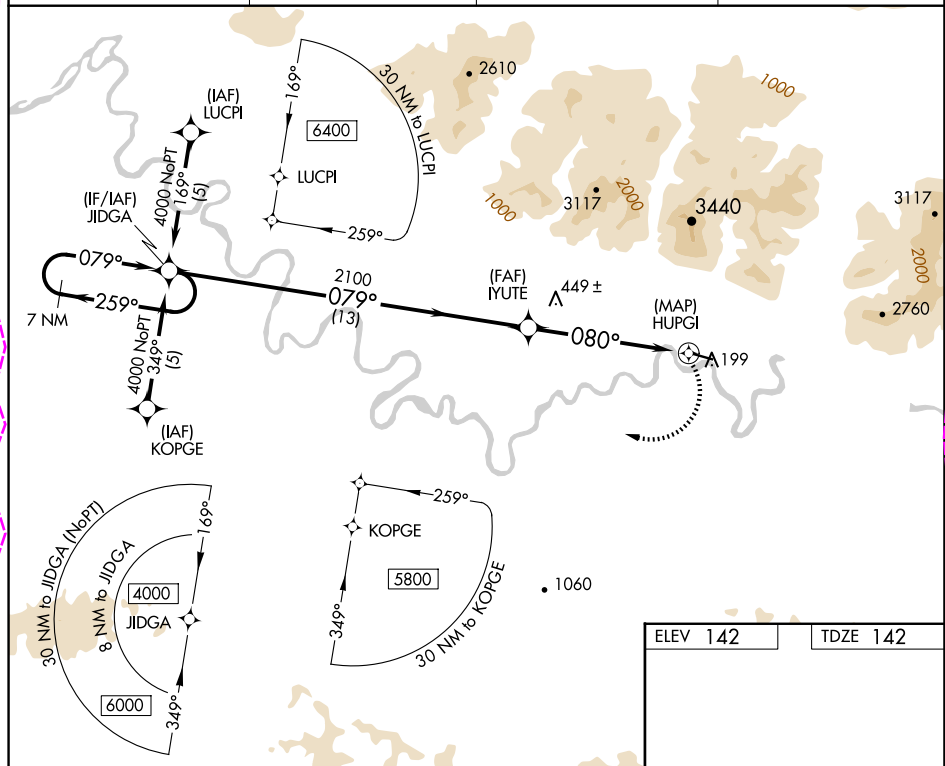
MISSED APPROACH: Climbing right turn to 4000
 direct JIDGA and hold.

AFM/PAFM AWOS-3P
132.1

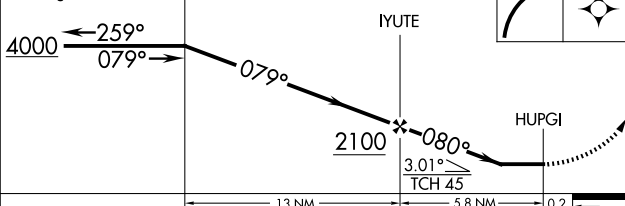
ANCHORAGE CENTER
119.2 263.0

KOTZEBUE RADIO
122.0

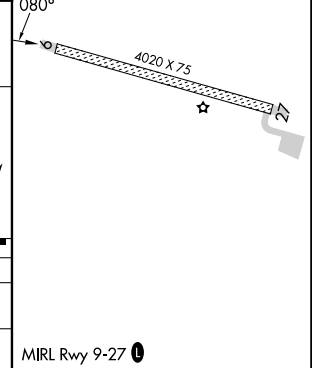
CTAF
122.7



7 NM
 Holding Pattern



CATEGORY	A	B	C	D
RNAV MDA	780-1 638 (700-1)	780-1 638 (700-1)	780-1 638 (700-1)	780-2 638 (700-2)
CIRCLING	780-1 638 (700-1)	780-1 638 (700-1)	780-1 638 (700-1)	840-2 698 (700-2)



KOBUK, ALASKA

Orig-C 05OCT23

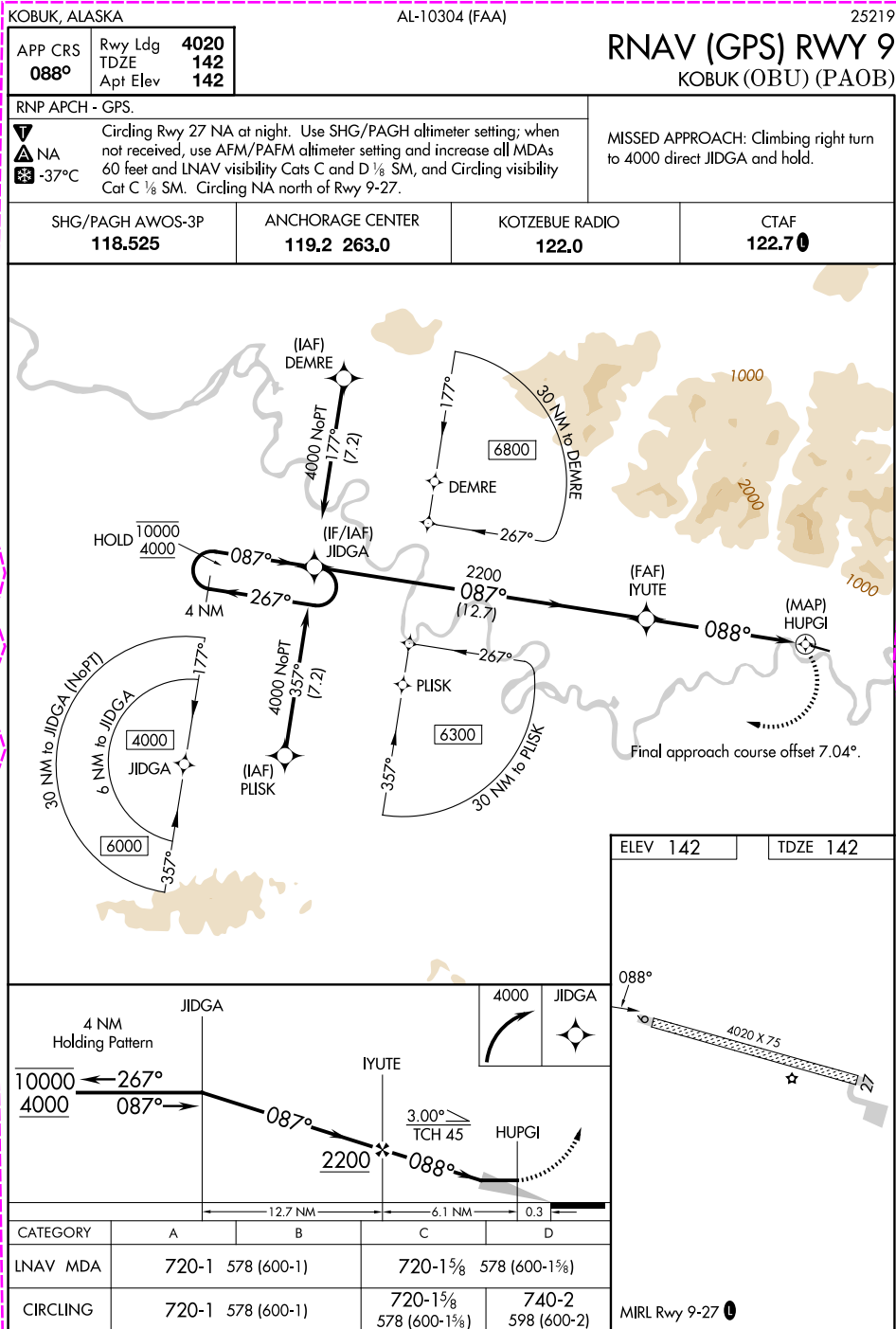
66°55'N-156°54'W

KOBUK (OBU) (PAOB)

RNAV (GPS) RWY 9

AK, 12 JUN 2025 to 07 AUG 2025

AK, 12 JUN 2025 to 07 AUG 2025



KOBUK, ALASKA

Amdt 1 07AUG25

66°55'N-156°54'W

KOBUK (OBU) (PAOB)

RNAV (GPS) RWY 9