

KOBUK, ALASKA

AL-10304 (FAA)

25107

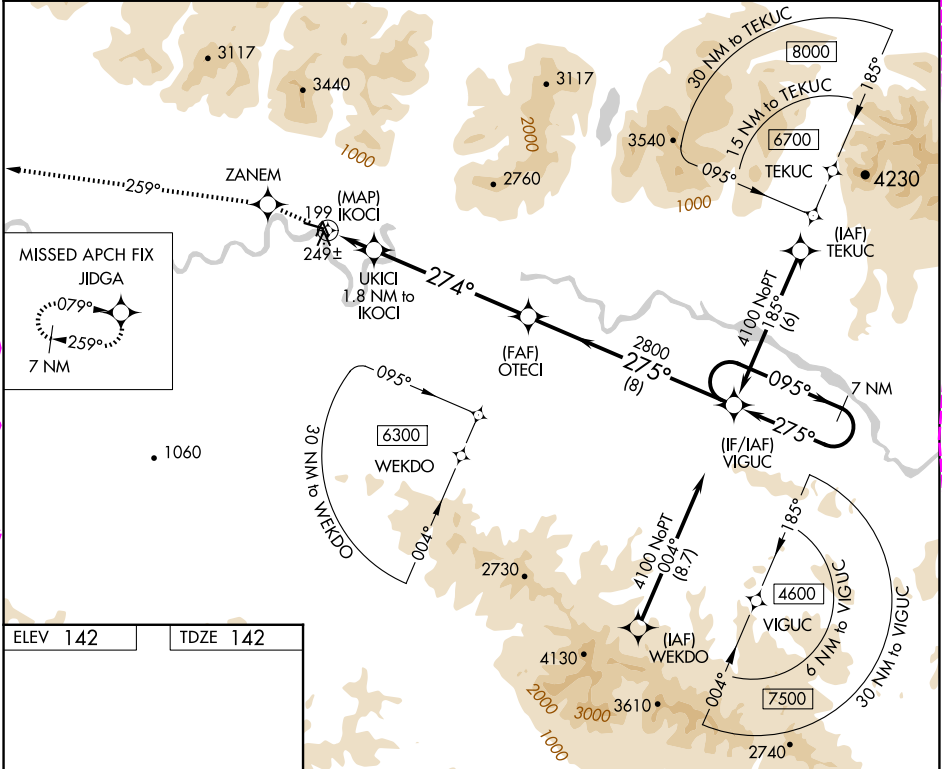
APP CRS	Rwy Idg	4020
274°	TDZE	142
	Apt Elev	142

RNAV (GPS) RWY 27

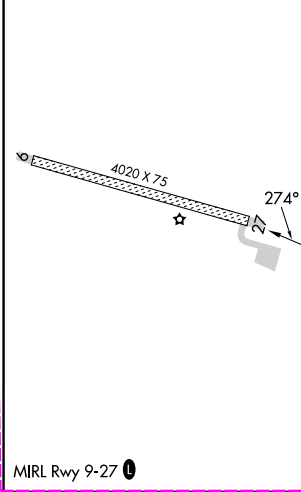
KOBUK (OBU) (PAOB)

RNP APCH - GPS.		MISSED APPROACH: Climb to 4000 direct ZANEM and on track 259° to JIDGA and hold.
▼	Use Amber altimeter setting. Circling NA north of Rwy 9-27.	
▲ NA	Rwy 27 helicopter visibility reduction below ¾ SM NA.	
☁ -37°C	Straight-in Rwy 27 NA at night, Circling Rwy 27 NA at night.	

AFM/PAFM AWOS-3P 132.1	ANCHORAGE CENTER 119.2 263.0	KOTZEBUE RADIO 122.0	CTAF 122.7
---------------------------	---------------------------------	-------------------------	---------------



ELEV 142	TDZE 142
----------	----------



4000	ZANEM	tr 259°	JIDGA	VIGUC	7 NM Holding Pattern
	UKICI 1.8 NM to IKOCI		OTECI		
	IKOCI	274°	2800		
	820	3.09° TCH 45			
	0.2	1.8 NM	6 NM	8 NM	
CATEGORY	A	B	C	D	
RNAV MDA	640-1	498 (500-1)	640-1 3/8	498 (500-1 3/8)	
CIRCLING	700-1	558 (600-1)	700-1 1/2	840-2 1/4	
			558 (600-1 1/2)	698 (700-2 1/4)	

KOBUK, ALASKA

Orig-C 14JUL22

66°55'N-156°54'W

KOBUK (OBU) (PAOB)

RNAV (GPS) RWY 27

KOBUK, ALASKA

AL-10304 (FAA)

25219

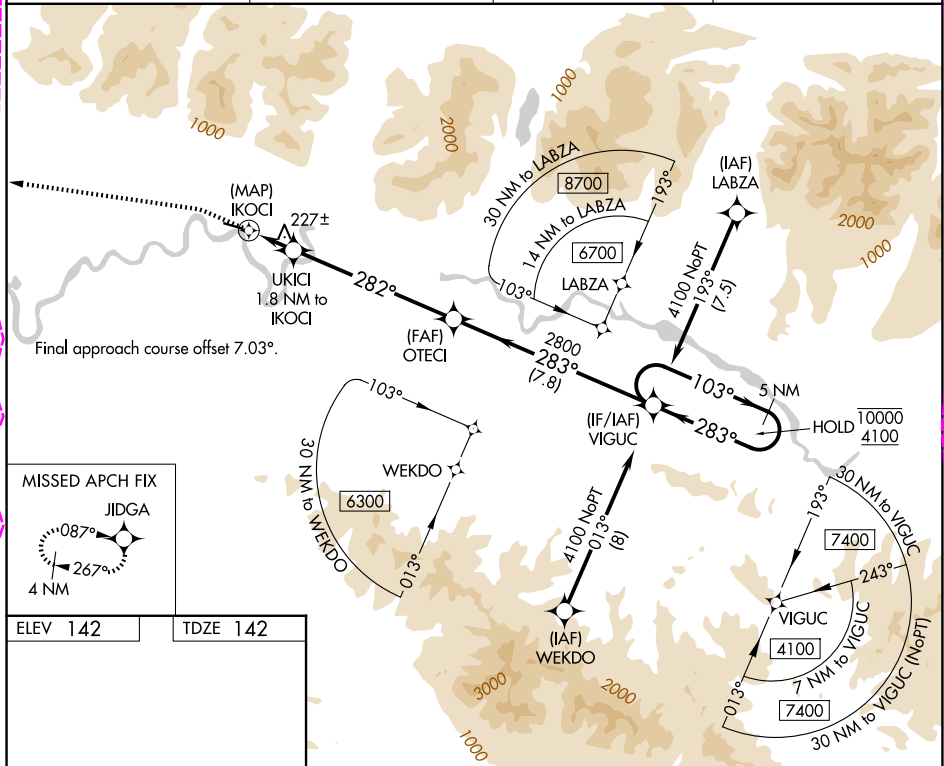
APP CRS	Rwy Ldg	4020
282°	TDZE	142
	Apt Elev	142

RNAV (GPS) RWY 27

KOBUK (OBU) (PAOB)

RNP APCH - GPS.	Procedure NA at night. Circling NA north of Rwy 9-27. Rwy 27 Helicopter visibility reduction below 1 SM NA. Use SHG/PAGH altimeter setting; when not received, use AFM/PAFM altimeter setting and increase all MDAs 60 feet and LNAV visibility Cats C and D ¼ SM.	MISSED APPROACH: Climb to 600, then climbing left turn to 4000 direct JIDGA and hold.
-----------------	--	---

SHG/PAHG AWOS-3P 118.525	ANCHORAGE CENTER 119.2 263.0	KOTZEBUE RADIO 122.0	CTAF 122.7
-----------------------------	---------------------------------	-------------------------	---------------



4020 X 75

27°

282°

600

↑

4000

↶

JIDGA

✧

UKICI

1.8 NM to IKOCI

≤ 3.00°

TCH 45

OTECI

283°

2800

VIGUC

5 NM Holding Pattern

103°

10000

283°

4100

IKOCI

820

0.3

1.8 NM

6.2 NM

7.8 NM

CATEGORY	A	B	C	D
LNAV MDA	520-1 378 (400-1)			
CIRCLING	560-1 418 (500-1)	620-1 478 (500-1)	620-1½ 478 (500-1½)	740-2 598 (600-2)

MIRL Rwy 9-27

KOBUK, ALASKA

Amdt 1 07AUG25

66°55'N-156°54'W

KOBUK (OBU) (PAOB)

RNAV (GPS) RWY 27

AK, 07 AUG 2025 to 02 OCT 2025