

SUTTON, WEST VIRGINIA

AL-10299 (FAA)

25107

APP CRS	Rwy Idg	3815
196°	TDZE	1276
	Apt Elev	1276

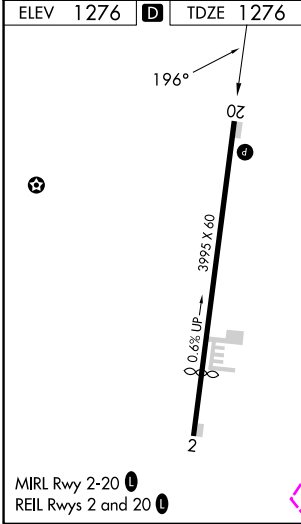
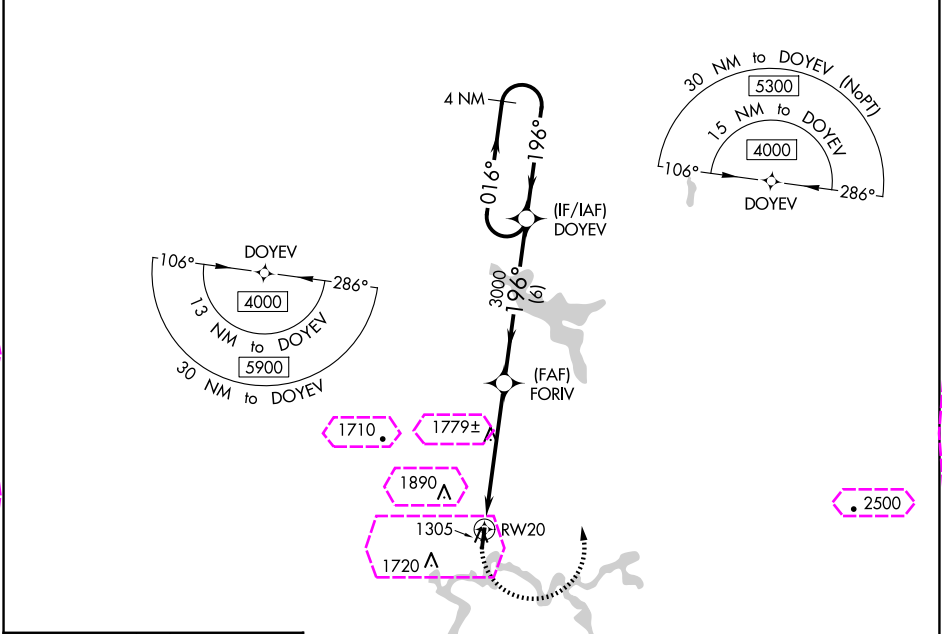
RNAV (GPS) RWY 20

BRAXTON COUNTY (48I)

V DME/DME RNP-0.3 NA. Procedure NA at night. Helicopter visibility reduction below 1 SM NA. When local altimeter setting not received, use Clarksburg altimeter setting and increase all MDA 260 feet. Increase LNAV Cat A/B visibility ¼ mile, LNAV Cat C visibility ½ mile, and Circling Cat A visibility ¼ mile.

Δ NA MISSED APPROACH: Climbing left turn to 4000 direct DOYEV and hold.

AWOS-3PT 118.225	CLARKSBURG APP CON ★ 121.15 284.65	CTAF 122.9 0
----------------------------	--	------------------------



4000	DOYEV	VGSI and descent angles not coincident (VGSI Angle 4.00/TCH 40).	DOYEV	4 NM Holding Pattern
CATEGORY	A	B	C	D
LNAV MDA	2060-1 784 (800-1)	2060-1 ¼ 784 (800-1 ¼)	2060-2 ½ 784 (800-2 ½)	NA
CIRCLING	2060-1 784 (800-1)	2240-1 ½ 964 (1000-1 ½)	2240-3 964 (1000-3)	NA

SUTTON, WEST VIRGINIA
Amdt 1 08JAN15

38°41'N-80°39'W

BRAXTON COUNTY (48I)

RNAV (GPS) RWY 20

SUTTON, WEST VIRGINIA

AL-10299 (FAA)

25219

APP CRS 196°	Rwy Ldg 3815
	TDZE 1276
	Apt Elev 1276

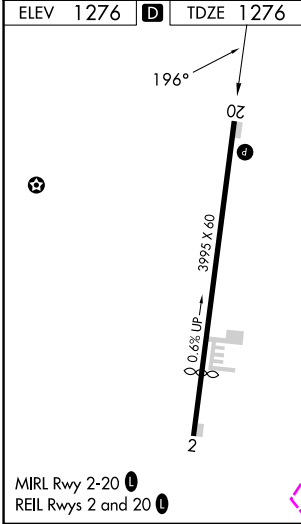
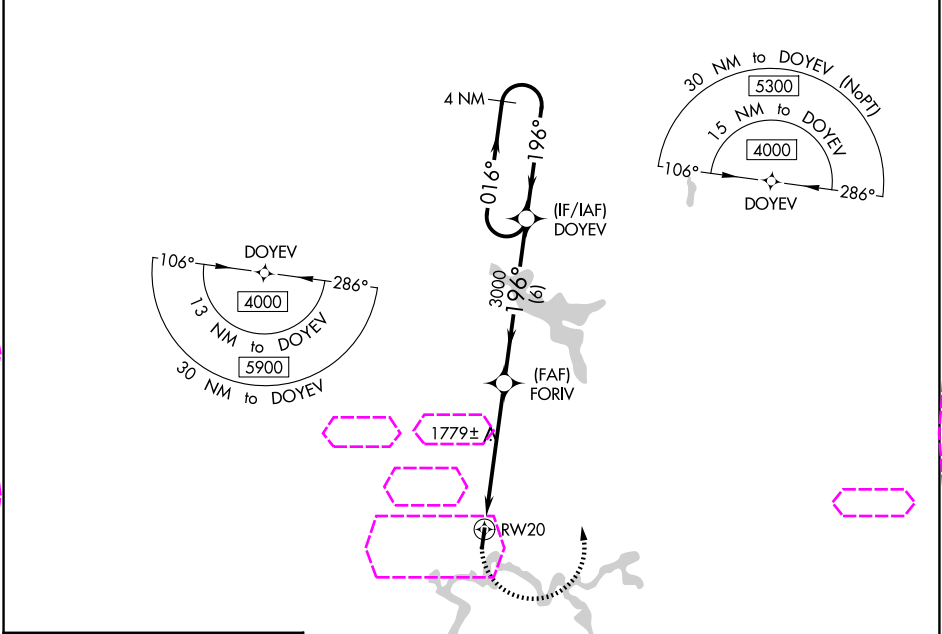
RNAV (GPS) RWY 20

BRAXTON COUNTY (48I)

V DME/DME RNP-0.3 NA. Procedure NA at night. Helicopter visibility reduction below 1 SM NA. When local altimeter setting not received, use Clarksburg altimeter setting and increase all MDA 260 feet. Increase LNAV Cat A/B visibility ¼ mile, LNAV Cat C visibility ½ mile, and Circling Cat A visibility ¼ mile.

Δ NA MISSED APPROACH: Climbing left turn to 4000 direct DOYEV and hold.

AWOS-3PT 118.225	CLARKSBURG APP CON ★ 121.15 284.65	CTAF 122.9 0
----------------------------	--	------------------------



4000	DOYEV	VGSI and descent angles not coincident (VGSI Angle 4.00/TCH 40).	DOYEV	4 NM Holding Pattern
		FORIV		
	RW20	≤ 3.00° TCH 40	3000	196°
		5.3 NM	6 NM	
CATEGORY	A	B	C	D
LNAV MDA	2060-1 784 (800-1)	2060-1 ¼ 784 (800-1 ¼)	2060-2 ½ 784 (800-2 ½)	NA
CIRCLING	2060-1 784 (800-1)	2240-1 ½ 964 (1000-1 ½)	2240-3 964 (1000-3)	NA

SUTTON, WEST VIRGINIA
Amdt 1 08JAN15

38°41'N-80°39'W

BRAXTON COUNTY (48I)

RNAV (GPS) RWY 20

NE-4, 07 AUG 2025 to 04 SEP 2025

NE-4, 07 AUG 2025 to 04 SEP 2025