

TOMPKINSVILLE, KENTUCKY

AL-10286 (FAA)

23222

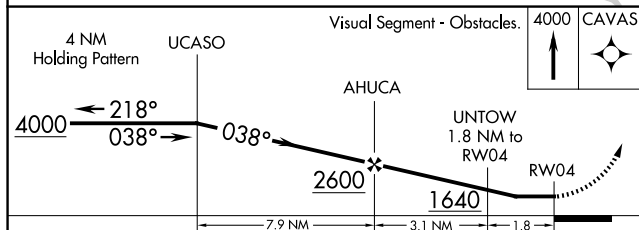
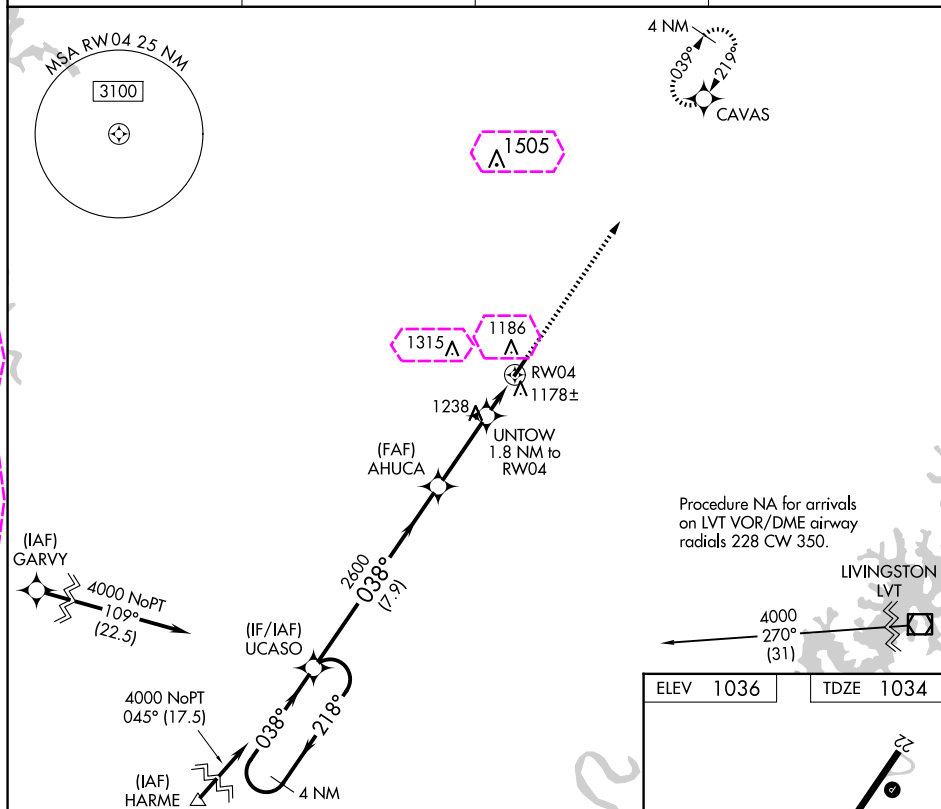
APP CRS 038°	Rwy Idg 4000
	TDZE 1034
	Apt Elev 1036

RNAV (GPS) RWY 4

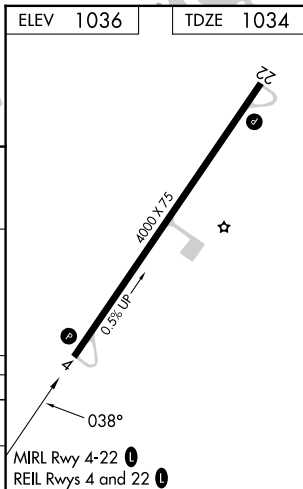
TOMPKINSVILLE/MONROE COUNTY (T'ZV)

T NA	DME/DME RNP-0.3 NA. Helicopter visibility reduction below 1 SM NA. Night landing: Rwy 4 NA. Use Glasgow altimeter setting.	MISSED APPROACH: Climb to 4000 direct CAVAS and hold.
-----------------------	---	--

AWOS-AV 124.175	GLW AWOS-3 118.525	MEMPHIS CENTER 132.9 290.3	UNICOM 123.05 (CTAF) 0
---------------------------	------------------------------	--------------------------------------	----------------------------------



CATEGORY	A	B	C	D
LNAV MDA	1540-1	506 (600-1)	1540-1 3/8 506 (600-1 3/8)	NA
CIRCLING	1640-1 604 (700-1)	1800-1 764 (800-1)	1840-2 1/4 804 (900-2 1/4)	NA



TOMPKINSVILLE, KENTUCKY

Amdt 1C 02MAR17

TOMPKINSVILLE/MONROE COUNTY (T'ZV)

36°44'N-85°39'W

RNAV (GPS) RWY 4

RNAV (GPS) RWY 4