

TOMPKINSVILLE, KENTUCKY

AL-10286 (FAA)

23222

WAAS CH 58031 W22A	APP CRS 218°	Rwy Idg TDZE Apt Elev	4000 1036 1036
--	------------------------	-----------------------------	---

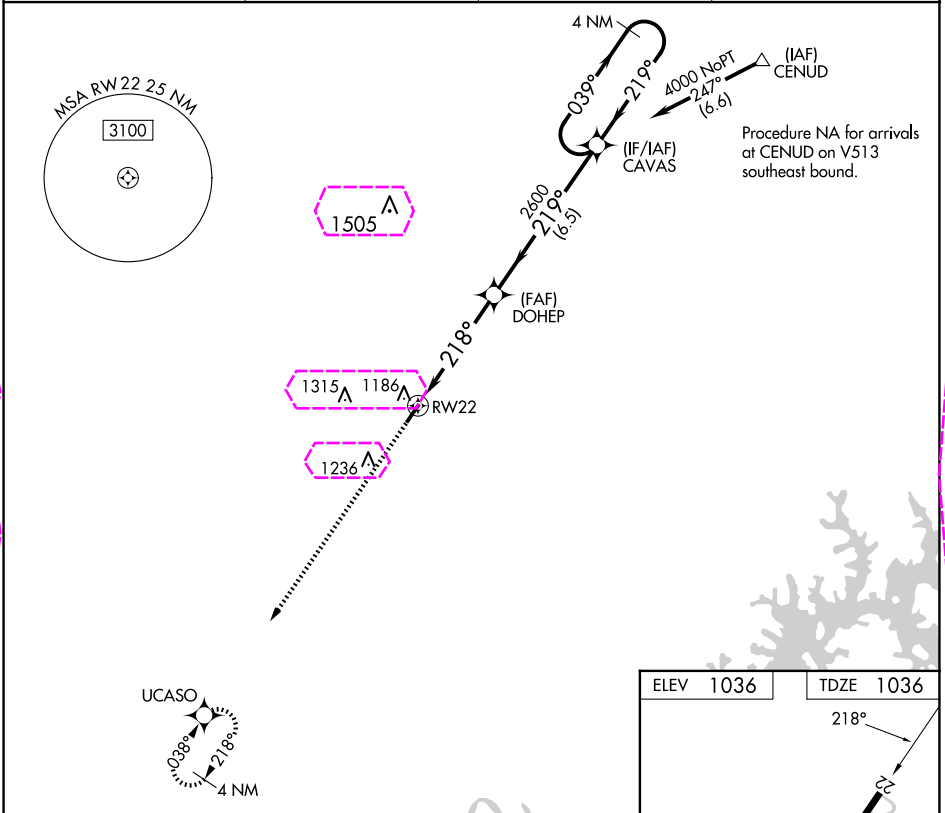
RNAV (GPS) RWY 22

TOMPKINSVILLE/MONROE COUNTY (T'ZV)

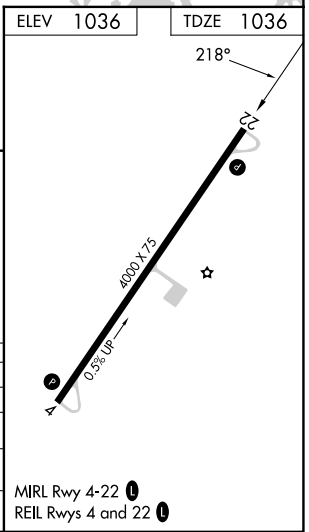
Baro-VNAV NA. DME/DME RNP-0.3 NA. Helicopter visibility reduction below ¼ SM NA. Use Glasgow altimeter setting. Night landing: Rwy 4 NA.

MISSED APPROACH: Climb to 4000 direct UCASO and hold.

AWOS-AV 124.175	GLW AWOS-3 118.525	MEMPHIS CENTER 132.9 290.3	UNICOM 123.05 (CTAF) 0
---------------------------	------------------------------	--------------------------------------	----------------------------------



4000	UCASO	*LNAV only.	CAVAS	4 NM Holding Pattern
		*1.7 NM to RW22	DOHEP	2600
				2600
				GP 3.00° TCH 30
		1.7	3.1 NM	6.5 NM
CATEGORY	A	B	C	D
LPV DA	1385-1¼	349 (400-1¼)		NA
LNAV/VNAV DA	1593-2	557 (600-2)		NA
LNAV MDA	1620-1	584 (600-1)	1620-1¾ 584 (600-1¾)	NA
CIRCLING	1640-1 604 (700-1)	1800-1 764 (800-1)	1840-2¼ 804 (900-2¼)	NA



TOMPKINSVILLE, KENTUCKY
Amdt 1B 31MAR16

TOMPKINSVILLE/MONROE COUNTY (T'ZV)
36°44'N-85°39'W
RNAV (GPS) RWY 22

TOMPKINSVILLE, KENTUCKY

AL-10286 (FAA)

25219

WAAS CH 58031 W22A	APP CRS 218°	Rwy Ldg TDZE Apt Elev	4000 1036 1036
--	------------------------	-----------------------------	---

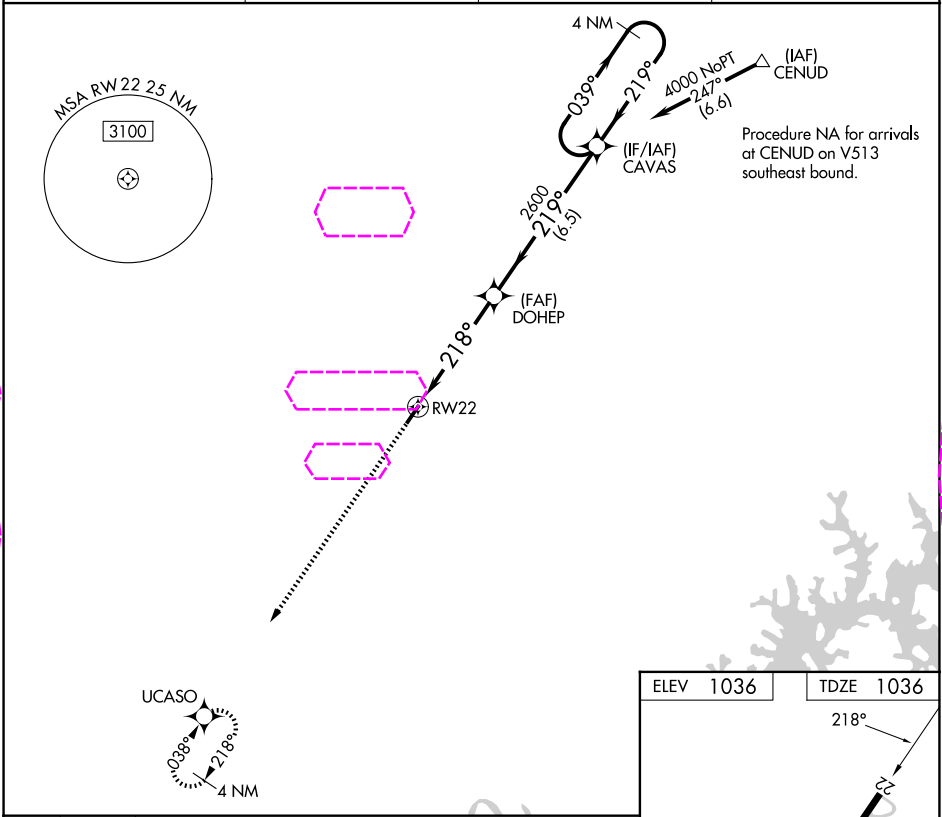
RNAV (GPS) RWY 22

TOMPKINSVILLE/MONROE COUNTY (T'ZV)

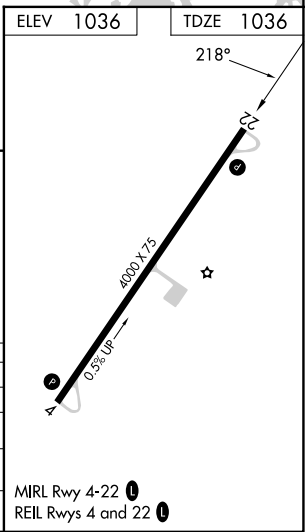
Baro-VNAV NA. DME/DME RNP-0.3 NA. Helicopter visibility reduction below ¼ SM NA. Use Glasgow altimeter setting. Night landing: Rwy 4 NA.

MISSED APPROACH: Climb to 4000 direct UCASO and hold.

AWOS-AV 124.175	GLW AWOS-3 118.525	MEMPHIS CENTER 132.9 290.3	UNICOM 123.05 (CTAF) 0
---------------------------	------------------------------	--------------------------------------	----------------------------------



4000	UCASO	*LNAV only.	CAVAS	4 NM Holding Pattern
		*1.7 NM to RWY 22	DOHEP 2600	219°
				039° → 4000
				GP 3.00° TCH 30
		1.7	3.1 NM	6.5 NM
CATEGORY	A	B	C	D
LPV DA	1385-1¼	349 (400-1¼)		NA
LNAV/VNAV DA	1593-2	557 (600-2)		NA
LNAV MDA	1620-1	584 (600-1)	1620-1¾ 584 (600-1¾)	NA
CIRCLING	1640-1 604 (700-1)	1800-1 764 (800-1)	1840-2¼ 804 (900-2¼)	NA



TOMPKINSVILLE, KENTUCKY
Amdt 1B 31MAR16

TOMPKINSVILLE/MONROE COUNTY (T'ZV)

36°44'N-85°39'W

RNAV (GPS) RWY 22