

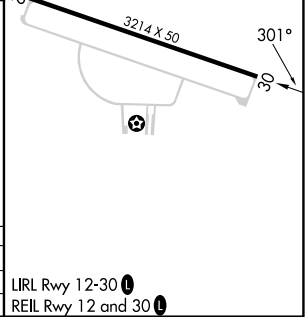
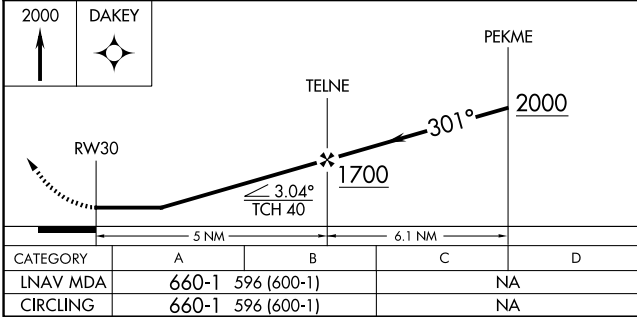
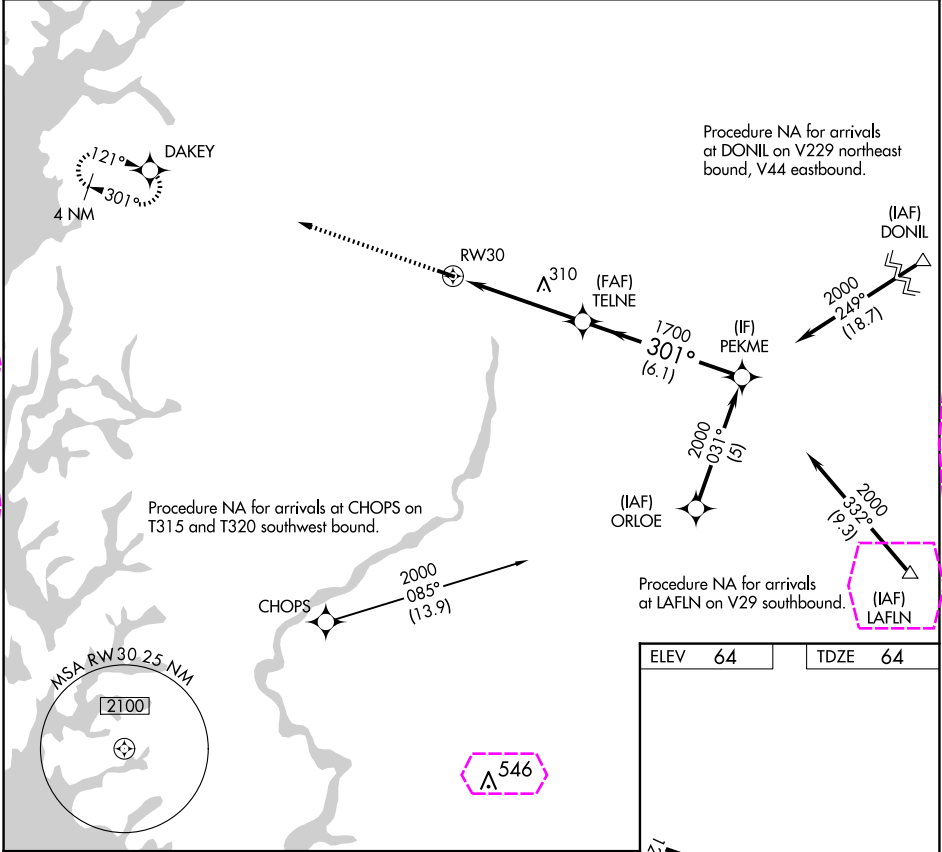
APP CRS	Rwy Idg	3214
301°	TDZE	64
	Apt Elev	64

RNAV (GPS) RWY 30

GOODEN AIRPARK (RJD)

RNP APCH - GPS.	MISSED APPROACH: Climb to 2000 direct DAKEY and hold.
NA Procedure NA at night. Use Easton altimeter setting; when not received, procedure NA. Rwy 30 helicopter visibility reduction below 1 SM NA.	

ESN AWOS-3PT 124.475	DOVER APP CON 132.425 257.875	UNICOM 122.8 (CTAF)
-------------------------	----------------------------------	------------------------



RIDGELY, MARYLAND

AL-10248 (FAA)

25219

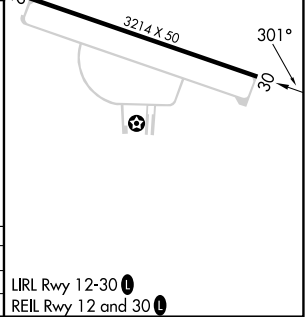
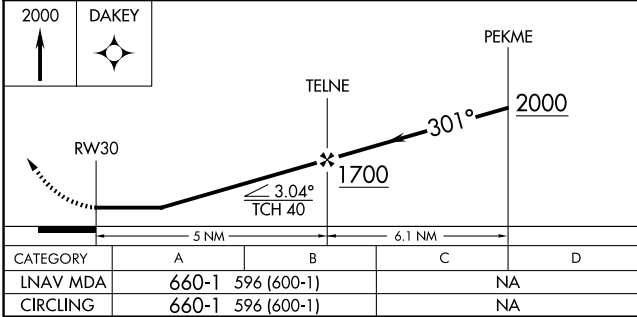
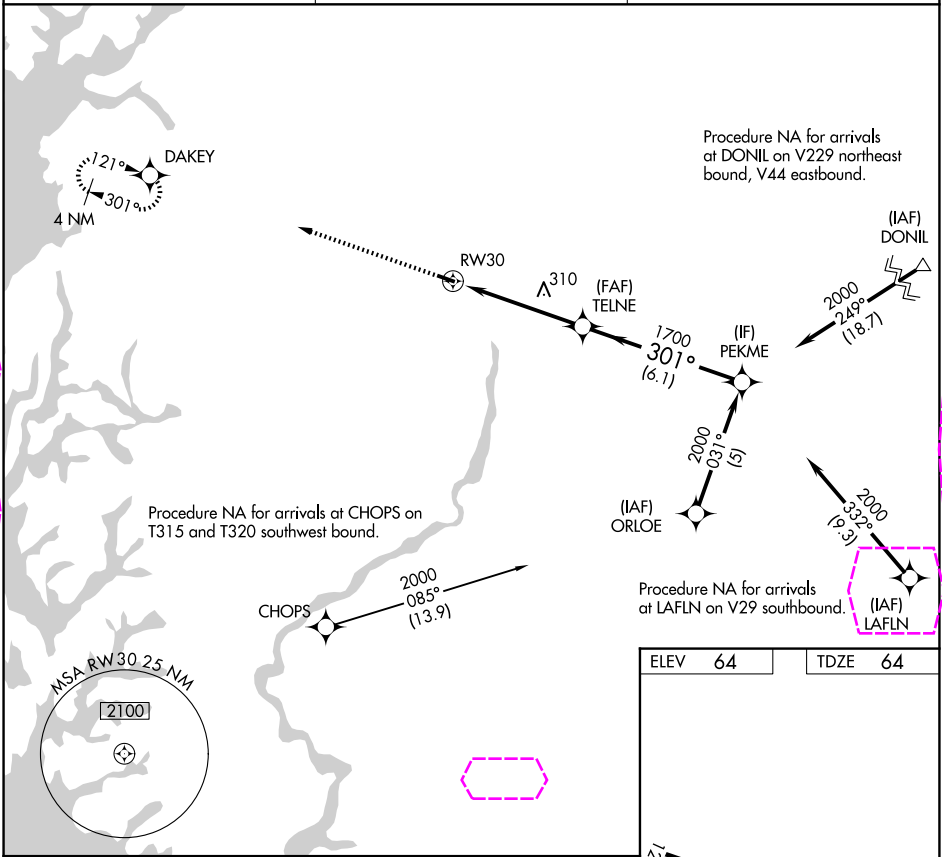
APP CRS 301°	Rwy Ldg 3214 TDZE 64 Apt Elev 64
-----------------	--

RNAV (GPS) RWY 30

GOODEN AIRPARK (RJD)

RNP APCH - GPS. ▼ Procedure NA at night. Use Easton altimeter setting; when not received, procedure NA. Rwy 30 helicopter visibility reduction below 1 SM NA. ▲ NA	MISSED APPROACH: Climb to 2000 direct DAKEY and hold.
--	---

ESN AWOS-3PT 124.475	DOVER APP CON 132.425 257.875	UNICOM 122.8 (CTAF) 0
-------------------------	----------------------------------	--------------------------



RIDGELY, MARYLAND
Orig-D 07SEP23

38°58'N-75°52'W

GOODEN AIRPARK (RJD)
RNAV (GPS) RWY 30

NE-3, 07 AUG 2025 to 04 SEP 2025

NE-3, 07 AUG 2025 to 04 SEP 2025