

RNAV (GPS)-B
CRISFIELD-SOMERSET COUNTY (W41)

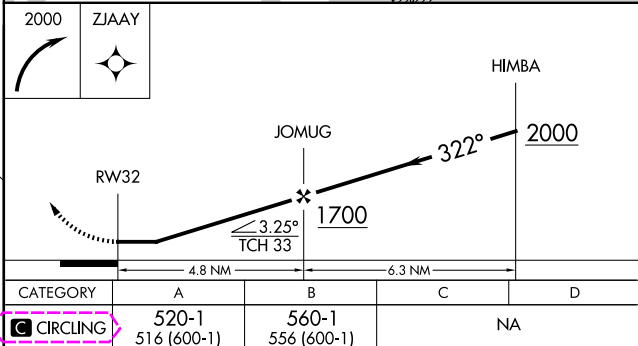
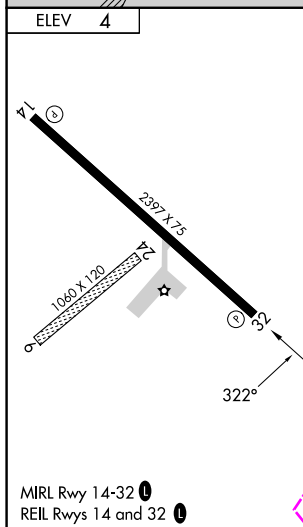
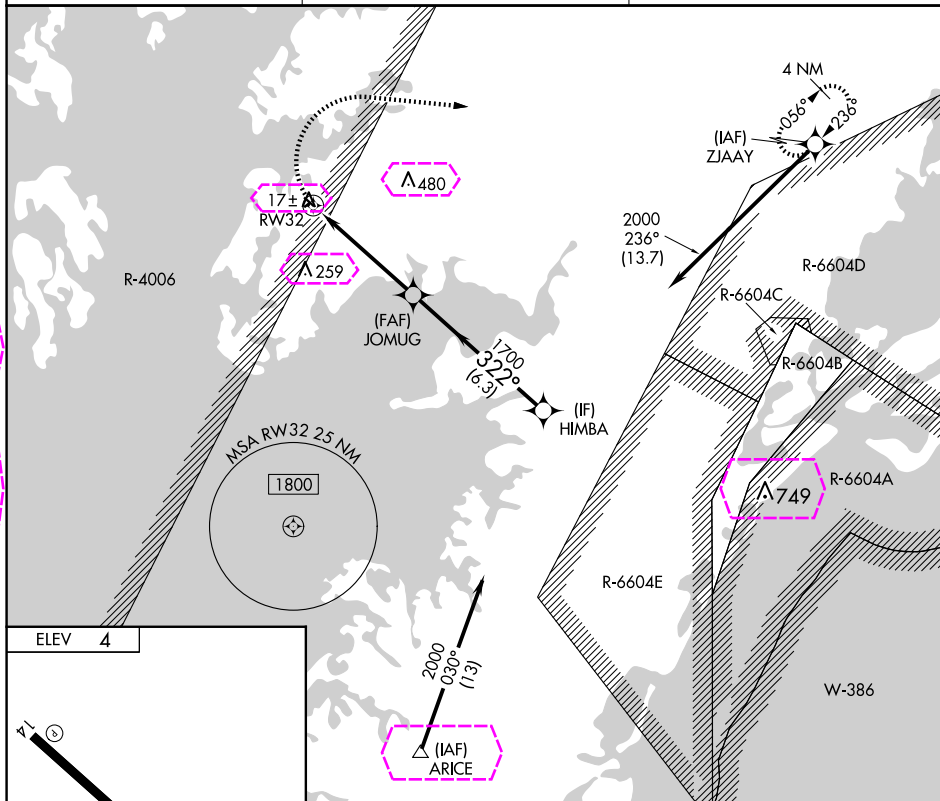
RNP APCH - GPS.

T Circling NA to Rwy 6 and 24. Procedure NA at night. Use WAL altimeter
A NA setting. Rwy 14, 32 helicopter visibility reduction below 1 SM NA.

MISSED APPROACH: Climbing right turn to 2000 direct ZJAAY and hold.

WAL ASOS
119.175

PATUXENT APP CON ★
127.95 314.0

UNICOM
122.8 (CTAF) **L**

CRISFIELD, MARYLAND
Amdt 1 12JUN25

CRISFIELD-SOMERSET COUNTY (W41)
RNAV (GPS)-B

38°01'N-75°50'W

CRISFIELD, MARYLAND

AL-10239 (FAA)

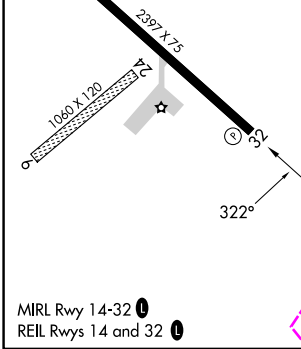
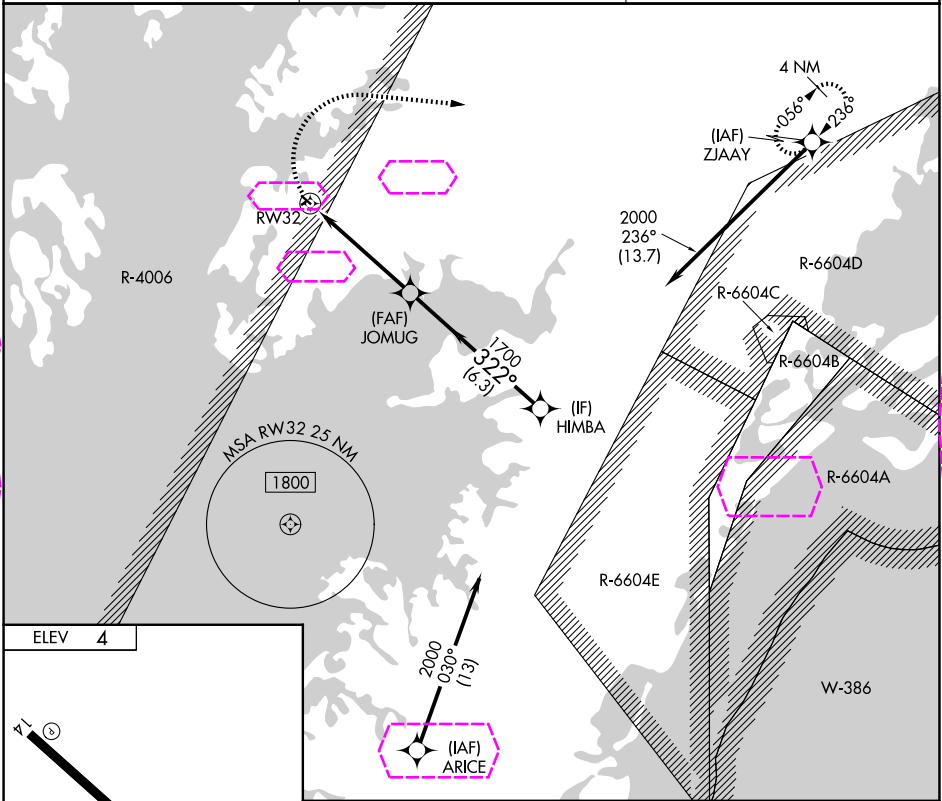
25219

APP CRS 322°	Rwy Ldg TDZE Apt Elev	N/A N/A 4
------------------------	-----------------------------	--------------------------------------

RNAV (GPS)-B

CRISFIELD-SOMERSET COUNTY (W41)

RNP APCH - GPS.		MISSED APPROACH: Climbing right turn to 2000 direct ZJAA and hold.
CIRCLING NA to Rwy 6 and 24. Procedure NA at night. Use WAL altimeter setting. Rwy 14, 32 helicopter visibility reduction below 1 SM NA.		
WAL ASOS 119.175	PATUXENT APP CON ★ 127.95 314.0	UNICOM 122.8 (CTAF) 0



2000	ZJAA	HIMBA
RW32		
JOMUG		
HIMBA		
2000		
322°		
1700		
3.25°		
TCH 33		
4.8 NM		
6.3 NM		
CATEGORY	A	B
CIRCLING	520-1 516 (600-1)	560-1 556 (600-1)
		NA

NE-3, 07 AUG 2025 to 04 SEP 2025

NE-3, 07 AUG 2025 to 04 SEP 2025

CRISFIELD, MARYLAND
Amdt 1 12JUN25

38°01'N-75°50'W

CRISFIELD-SOMERSET COUNTY (W41)
RNAV (GPS)-B