

BERRIEN SPRINGS, MICHIGAN

WAAS CH <b>42840</b> <b>W31A</b>	APP CRS <b>314°</b>	Rwy Idg <b>3019</b> TDZE <b>669</b> Apt Elev <b>674</b>
--	------------------------	---

## RNAV (GPS) RWY 31

ANDREWS UNIVERSITY AIRPARK (C20)

**V** Rwy 31 helicopter visibility reduction below 1 SM NA. DME/DME RNP-0.3 NA. Procedure NA at night. Use Benton Harbor altimeter setting; when not received, use South Bend Intl altimeter setting and increase all MDA 40 feet. Increase LP and LNAV Cats C/D visibility  $\frac{1}{2}$  SM and Circling Cats B/C  $\frac{1}{4}$  SM.

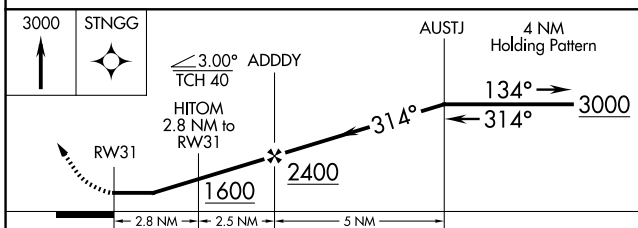
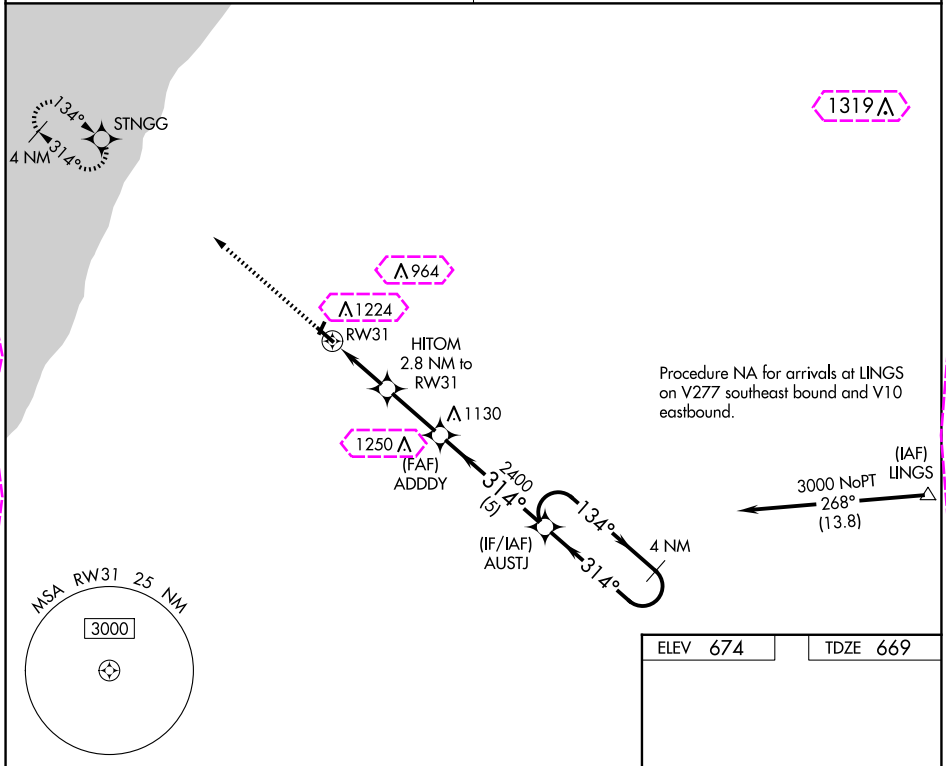
**MISSED APPROACH:**  
Climb to 3000 direct  
STNGG and hold.

SOUTH BEND APP CON ★

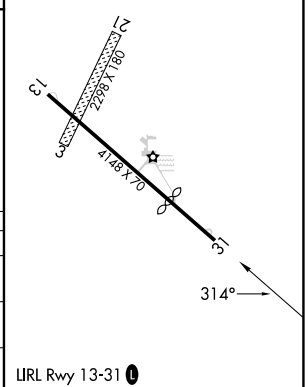
**118.55 257.8**

UNICOM

**122.7 (CTAF) L**



CATEGORY	A	B	C	D
LP MDA	1100-1	431 (500-1)	1100-1¼	431 (500-1¼)
LNAV MDA	1160-1	491 (500-1)	1160-1⅜	491 (500-1⅜)
<b>C</b> CIRCLING	1620-1¼	946 (1000-1¼)	1620-2¾ 946 (1000-2¾)	1620-3 946 (1000-3)



BERRIEN SPRINGS, MICHIGAN

Orig 17AUG17

ANDREWS UNIVERSITY AIRPARK (C20)

RNAV (GPS) RWY 31

41°57'N-86°22'W

BERRIEN SPRINGS, MICHIGAN

AL-10238 (FAA)

25219

WAAS CH <b>42840</b> <b>W31A</b>	APP CRS <b>314°</b>	Rwy Ldg TDZE <b>669</b> Apt Elev <b>674</b>
--	------------------------	---

## RNAV (GPS) RWY 31

ANDREWS UNIVERSITY AIRPARK (C20)

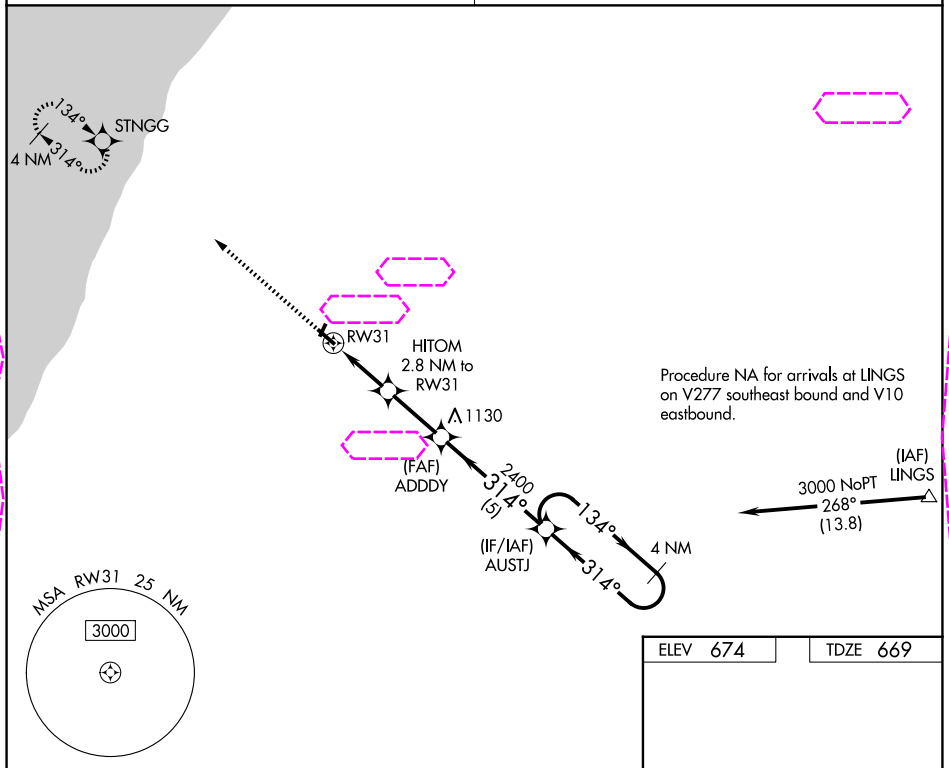
**NA** Rwy 31 helicopter visibility reduction below 1 SM NA. DME/DME RNP-0.3 NA. Procedure NA at night. Use Benton Harbor altimeter setting; when not received, use South Bend Intl altimeter setting and increase all MDA 40 feet. Increase LP and LNAV Cts C/D visibility  $\frac{1}{8}$  SM and Circling Cts B/C  $\frac{1}{4}$  SM.

**MISSED APPROACH:**  
Climb to 3000 direct STNGG and hold.

SOUTH BEND APP CON ★

**118.55 257.8**

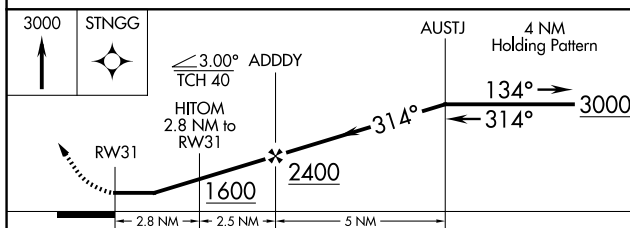
UNICOM

**122.7 (CTAF) 0**

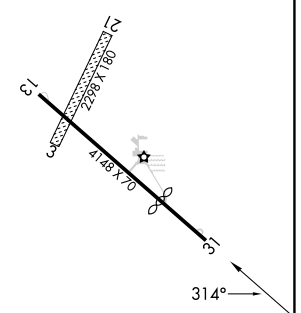
Procedure NA for arrivals at LINGS on V277 southeast bound and V10 eastbound.

3000 NoPT  
268°  
(13.8)

ELEV 674 TDZE 669



CATEGORY	A	B	C	D
LP MDA	1100-1	431 (500-1)	1100-1 $\frac{1}{4}$	431 (500-1 $\frac{1}{4}$ )
LNAV MDA	1160-1	491 (500-1)	1160-1 $\frac{3}{8}$	491 (500-1 $\frac{3}{8}$ )
<b>CIRCLING</b>	1620-1 $\frac{1}{4}$	946 (1000-1 $\frac{1}{4}$ )	1620-2 $\frac{3}{4}$ 946 (1000-2 $\frac{3}{4}$ )	1620-3 946 (1000-3)



IIRL Rwy 13-31 0

BERRIEN SPRINGS, MICHIGAN

Orig 17AUG17

41°57'N-86°22'W

ANDREWS UNIVERSITY AIRPARK (C20)

## RNAV (GPS) RWY 31

EC-1, 07 AUG 2025 to 04 SEP 2025

EC-1, 07 AUG 2025 to 04 SEP 2025