

BERRIEN SPRINGS, MICHIGAN

AL-10238 (FAA)

23110

WAAS CH <b>90440</b> <b>W13A</b>	APP CRS <b>134°</b>	Rwy Idg <b>4148</b> TDZE <b>669</b> Apt Elev <b>674</b>
--	------------------------	---

**RNAV (GPS) RWY 13**  
ANDREWS UNIVERSITY AIRPARK (C20)

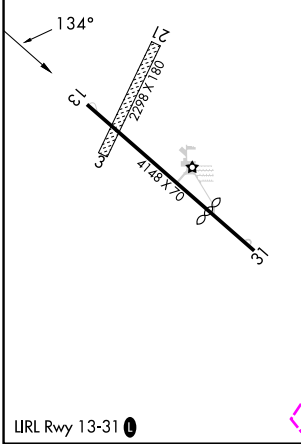
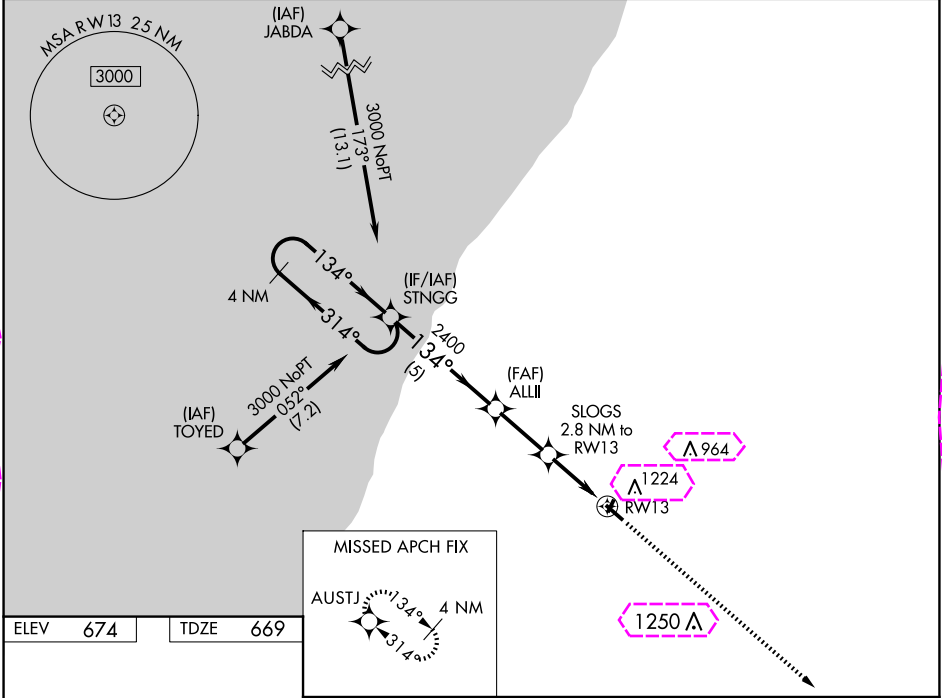
**NA**

Rwy 13 helicopter visibility reduction below 1 SM NA. DME/DME RNP-0.3 NA. Procedure NA at night. Use Benton Harbor altimeter setting; when not received, use South Bend Int altimeter setting and increase all MDA 40 feet. Increase LP and LNAV Cats C/D visibility ½ SM and Circling Cats B/C ¼ SM.

MISSED APPROACH: Climb to 3000 direct AUSTJ and hold.

SOUTH BEND APP CON ★  
**118.55 257.8**

UNICOM  
**122.7 (CTAF) 0**



4 NM Holding Pattern		3000	AUSTJ
STNGG		ALLII	3.00° TCH 40
3000		134°	134°
2400		SLOGS 2.8 NM to RWY 13	RWY 13
1600		5 NM	2.5 NM
CATEGORY		A	B
LP MDA		1100-1	431 (500-1)
LNAV MDA		1280-1	611 (700-1)
CIRCLING		1620-1¼	946 (1000-1¼)
		1620-2¾	946 (1000-2¾)
		1620-3	946 (1000-3)

LURL Rwy 13-31 0

BERRIEN SPRINGS, MICHIGAN

Orig 17AUG17

ANDREWS UNIVERSITY AIRPARK (C20)

**RNAV (GPS) RWY 13**

41°57'N - 86°22'W

EC-1, 10 JUL 2025 to 07 AUG 2025

EC-1, 10 JUL 2025 to 07 AUG 2025

BERRIEN SPRINGS, MICHIGAN

AL-10238 (FAA)

25219

WAAS CH 90440 W13A	APP CRS 134°	Rwy Ldg 4148 TDZE 669 Apt Elev 674
--------------------------	-----------------	---

RNAV (GPS) RWY 13  
ANDREWS UNIVERSITY AIRPARK (C20)

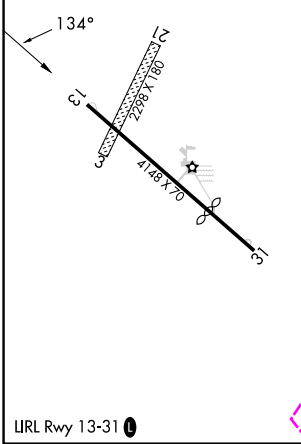
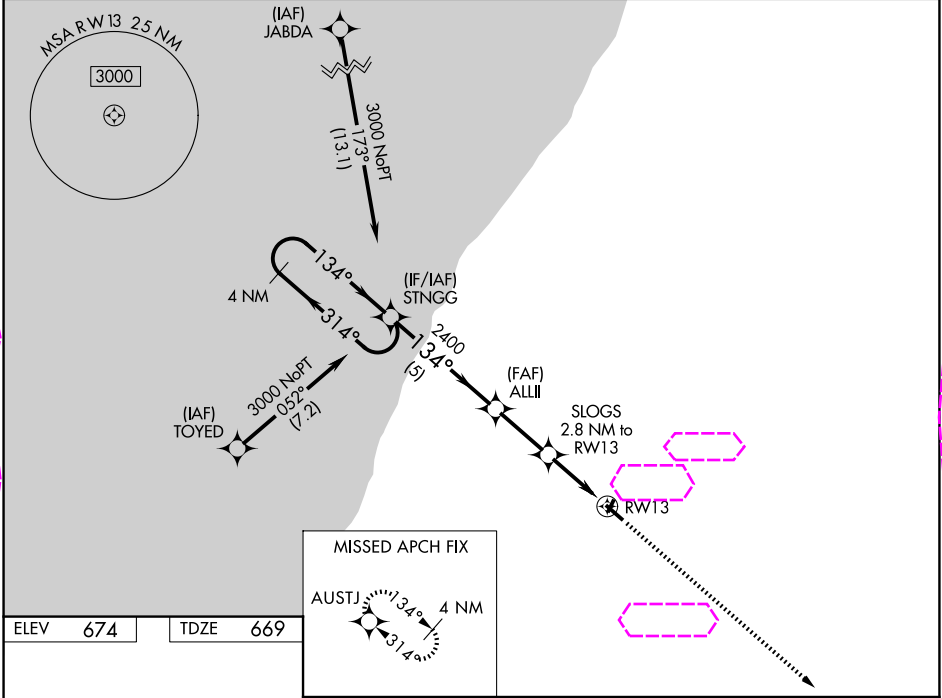
**NA**

Rwy 13 helicopter visibility reduction below 1 SM NA. DME/DME RNP-0.3 NA. Procedure NA at night. Use Benton Harbor altimeter setting; when not received, use South Bend Int altimeter setting and increase all MDA 40 feet. Increase LP and LNAV Cats C/D visibility ½ SM and Circling Cats B/C ¼ SM.

MISSED APPROACH: Climb to 3000 direct AUSTJ and hold.

SOUTH BEND APP CON ★  
118.55 257.8

UNICOM  
122.7 (CTAF) 0



4 NM Holding Pattern		<div><div>3000</div><div>↑</div></div>		<div><div>AUSTJ</div><div>✦</div></div>	
<div><div>STNGG</div><div>3000</div><div>←314°</div><div>134°→</div><div>134°</div><div>2400</div><div>3.00°</div><div>TCH 40</div><div>SLOGS</div><div>2.8 NM to RW13</div><div>1600</div><div>RW13</div><div>5 NM</div><div>2.5 NM</div><div>2.8 NM</div></div>					
CATEGORY	A	B	C	D	
LP MDA	1100-1	431 (500-1)	1100-1¼	431 (500-1¼)	
LNAV MDA	1280-1	611 (700-1)	1280-1¾	611 (700-1¾)	
CIRCLING	1620-1¼	946 (1000-1¼)	1620-2¾ 946 (1000-2¾)	1620-3 946 (1000-3)	

BERRIEN SPRINGS, MICHIGAN  
Orig 17AUG17

41°57'N - 86°22'W

ANDREWS UNIVERSITY AIRPARK (C20)  
RNAV (GPS) RWY 13

EC-1, 07 AUG 2025 to 04 SEP 2025

EC-1, 07 AUG 2025 to 04 SEP 2025