

MOUNT PLEASANT, TEXAS

AL-10186 (FAA)

21364

APP CRS 348°	Rwy Idg 6004
	TDZE 360
	Apt Elev 364

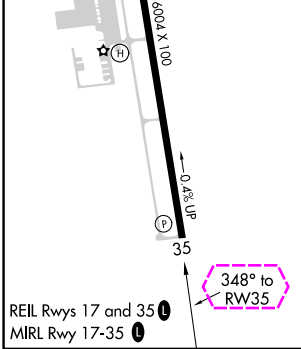
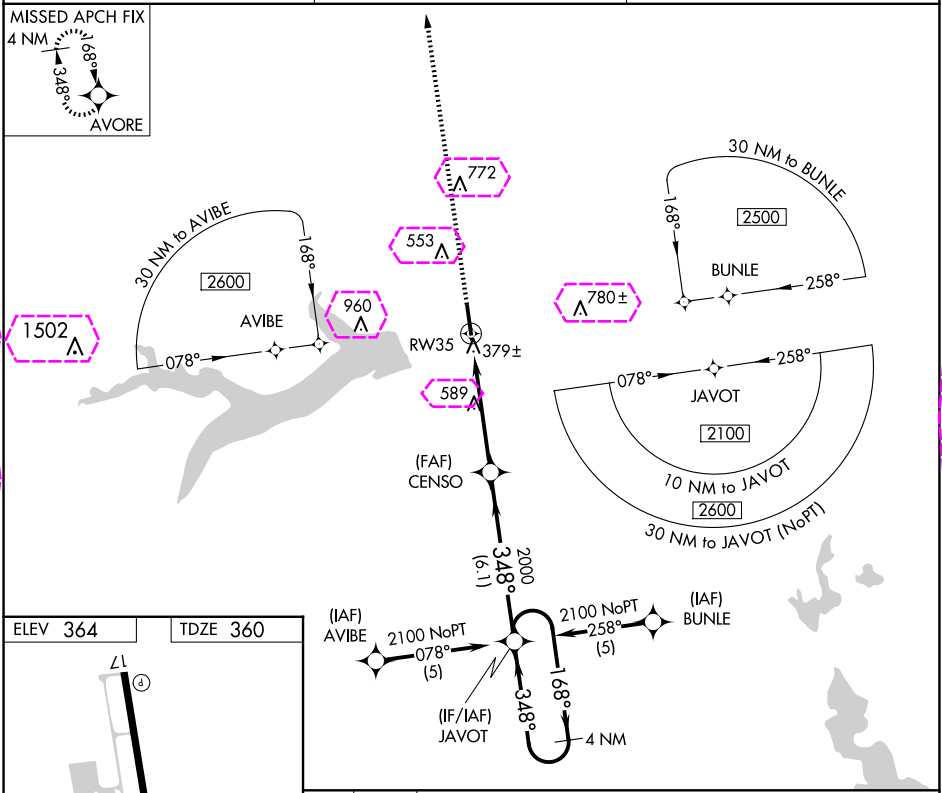
RNAV (GPS) RWY 35

MOUNT PLEASANT RGNL (OSA)

▼ For uncompensated Baro-VNAV systems, LNAV/VNAV NA below -15°C (5°F) or above 48°C (118°F). DME/DME RNP-0.3 NA. When local altimeter setting not received, use Paris altimeter setting and increase all DA/MDA 120 feet, increase LNAV/VNAV visibilities ½ mile all Cats, LNAV visibilities ¼ mile all Cats and circling visibilities ¼ mile all Cats. VDP and Baro-VNAV NA when using Paris altimeter setting.

▲ MISSED APPROACH: Climb to 2000 direct AVORE and hold.

AWOS-3 119.775	FORT WORTH CENTER 132.025 360.75	UNICOM 122.7 (CTAF) 0
--------------------------	--	---------------------------------



2000

AVORE

↑

✦

*LNAV only.

RW35

4 NM

Holding Pattern

2100

GP 3.00°

TCH 44

CENSO

JAVOT

168°

← 348°

*1.6 NM to RW35

1.6

3.4 NM

6.1 NM

2000

CATEGORY	A	B	C	D
LNAV/VNAV DA	700-1¼ 340 (400-1¼)			
LNAV MDA	900-1	540 (600-1)	900-1½ 540 (600-1½)	900-1¾ 540 (600-1¾)
CIRCLING	900-1	536 (600-1)	1040-2 676 (700-2)	1040-2¼ 676 (700-2¼)

MOUNT PLEASANT, TEXAS
Amdt 1A 30DEC21

33°06'N-94°58'W

MOUNT PLEASANT RGNL (OSA) RNAV (GPS) RWY 35

SC-2, 10 JUL 2025 to 07 AUG 2025

SC-2, 10 JUL 2025 to 07 AUG 2025

MOUNT PLEASANT, TEXAS

AL-10186 (FAA)

25219

APP CRS 348°	Rwy Ldg 6004 TDZE 360 Apt Elev 364
------------------------	---

RNAV (GPS) RWY 35

MOUNT PLEASANT RGNL (OSA)

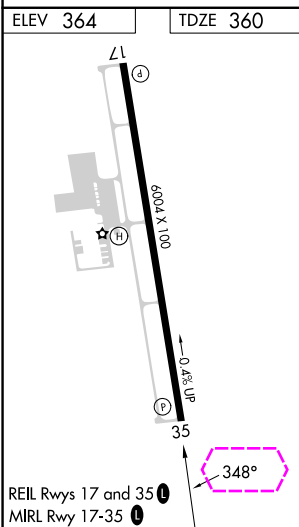
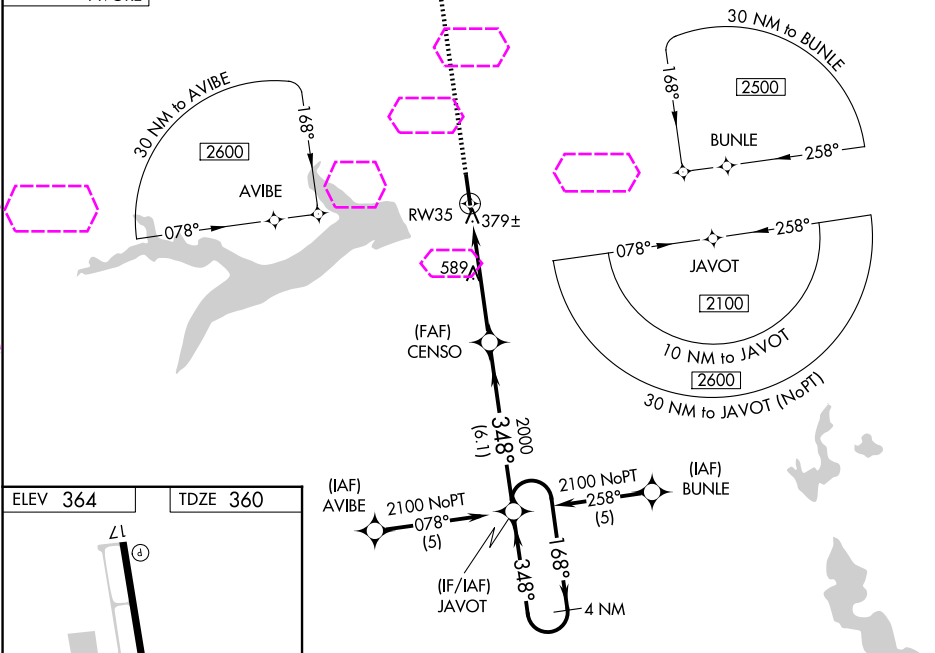
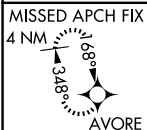
▼ For uncompensated Baro-VNAV systems, LNAV/VNAV NA below -15°C (5°F) or above 48°C (118°F). DME/DME RNP-0.3 NA. When local altimeter setting not received, use Paris altimeter setting and increase all DA/MDA 120 feet, increase LNAV/VNAV visibilities ½ mile all Cats, LNAV visibilities ¼ mile all Cats and circling visibilities ¼ mile all Cats. VDP and Baro-VNAV NA when using Paris altimeter setting.



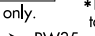


MISSED APPROACH: Climb to 2000 direct AVORE and hold.

AWOS-3
119.775

FORT WORTH CENTER
132.025 317.75

UNICOM
122.7 (CTAF) 0



2000 AVORE		4 NM Holding Pattern			
					
*LNAV only.		JAVOT 168° 2100			
		GP 3.00° TCH 44			
*1.6 NM to RW35		CENSO 348° 2000			
		← 348°			
					
CATEGORY	A	B	C	D	
LNAV/DA VNAV	700-1¼ 340 (400-1¼)				
LNAV MDA	900-1 540 (600-1)	900-1½ 540 (600-1½)	900-1¾ 540 (600-1¾)		
CIRCLING	900-1 536 (600-1)	1040-2 676 (700-2)	1040-2¼ 676 (700-2¼)		

MOUNT PLEASANT, TEXAS
Amdt 1A 30DEC21

33°06'N-94°58'W

MOUNT PLEASANT RGNL (OSA)
RNAV (GPS) RWY 35

SC-2, 07 AUG 2025 to 04 SEP 2025

SC-2, 07 AUG 2025 to 04 SEP 2025