

MOUNT PLEASANT, TEXAS

AL-10186 (FAA)

21280

APP CRS	Rwy Idg	6004
168°	TDZE	364
	Apt Elev	364

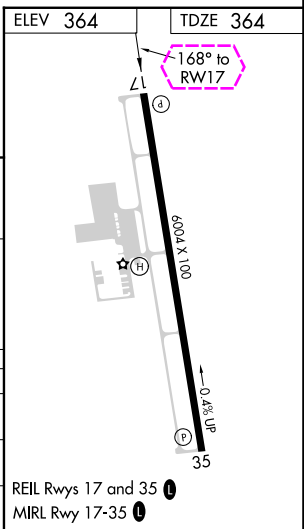
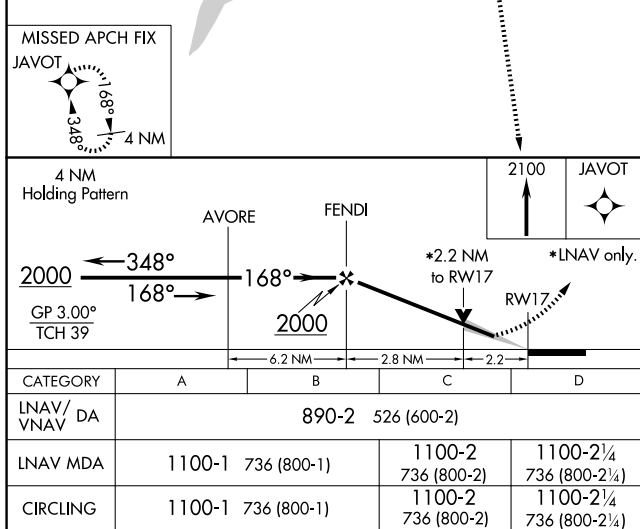
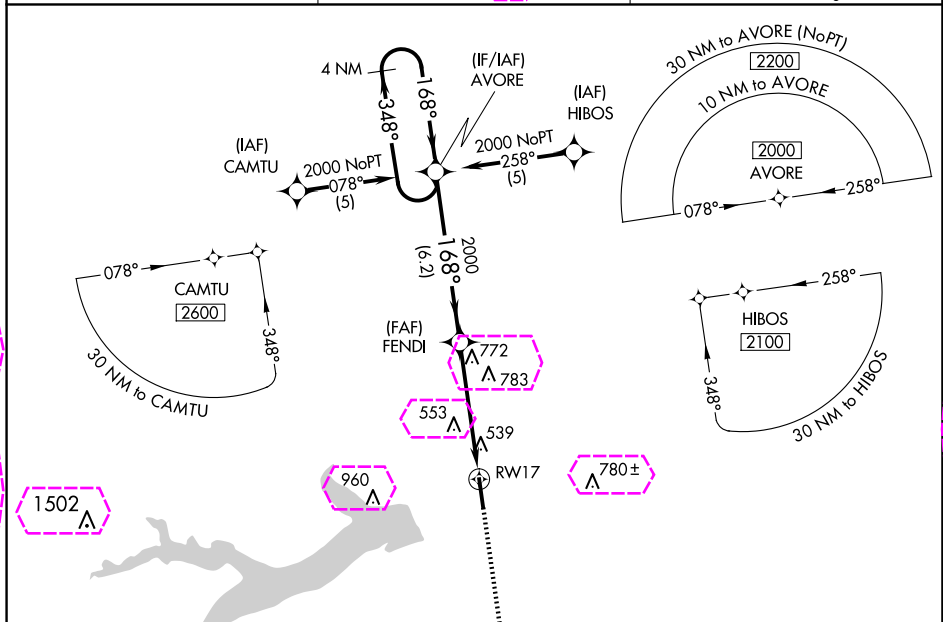
RNAV (GPS) RWY 17

MOUNT PLEASANT RGNL (OSA)

⚠ For uncompensated Baro-VNAV systems, LNAV/VNAV NA below -15°C (5°F) or above 48°C (118°F). DME/DME RNP-0.3 NA. When local altimeter setting not received, use Paris altimeter setting and increase all DA/MDA 120 feet, increase LNAV/VNAV visibilities ¼ mile all Cats, LNAV visibilities ½ mile all Cats, and circling visibilities ½ mile all Cats. VDP and Baro-VNAV NA when using Paris altimeter setting.

⚠ MISSED APPROACH: Climb to 2100 direct JAVOT and hold.

AWOS-3 119.775	FORT WORTH CENTER 132.025 360.75	UNICOM 122.7 (CTAF) 0
-------------------	-------------------------------------	--------------------------



MOUNT PLEASANT, TEXAS
Amdt 1 15JAN09

33°06'N-94°58'W

MOUNT PLEASANT RGNL (OSA)
RNAV (GPS) RWY 17

MOUNT PLEASANT, TEXAS

AL-10186 (FAA)

25219

APP CRS	Rwy Ldg	6004
168°	TDZE	364
	Apt Elev	364

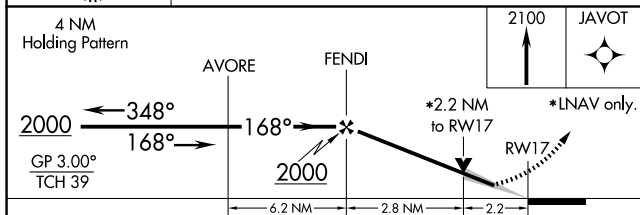
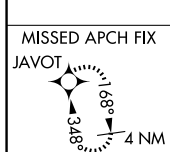
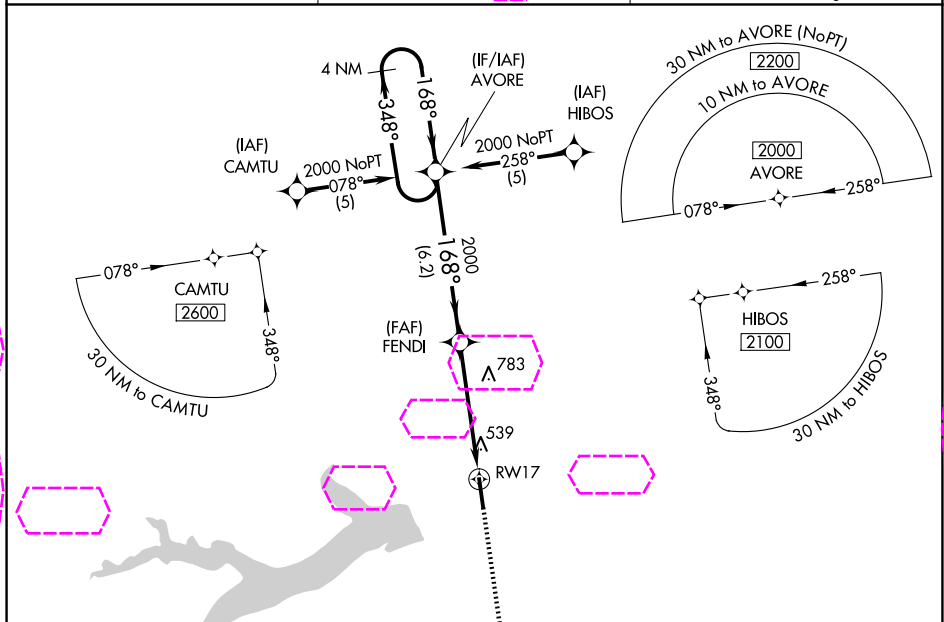
RNAV (GPS) RWY 17

MOUNT PLEASANT RGNL (OSA)

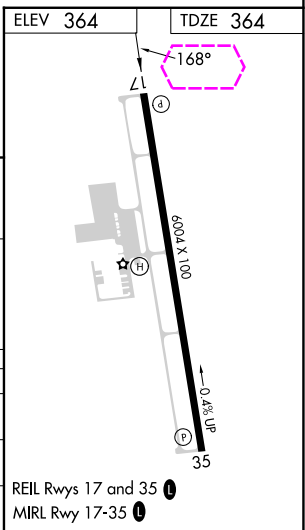
For uncompensated Baro-VNAV systems, LNAV/VNAV NA below -15°C (5°F) or above 48°C (118°F). DME/DME RNP-0.3 NA. When local altimeter setting not received, use Paris altimeter setting and increase all DA/MDA 120 feet, increase LNAV/VNAV visibilities ¼ mile all Cats, LNAV visibilities ½ mile all Cats, and circling visibilities ½ mile all Cats. VDP and Baro-VNAV NA when using Paris altimeter setting.

MISSED APPROACH: Climb to 2100 direct JAVOT and hold.

AWOS-3 119.775	FORT WORTH CENTER 132.025 317.75	UNICOM 122.7 (CTAF) 0
-------------------	-------------------------------------	--------------------------



CATEGORY	A	B	C	D
LNAV/ VNAV DA	890-2 526 (600-2)			
LNAV MDA	1100-1 736 (800-1)	1100-2 736 (800-2)	1100-2 736 (800-2)	1100-2 736 (800-2)
CIRCLING	1100-1 736 (800-1)	1100-2 736 (800-2)	1100-2 736 (800-2)	1100-2 736 (800-2)



MOUNT PLEASANT, TEXAS
Amdt 1 15JAN09

33°06'N-94°58'W

MOUNT PLEASANT RGNL (OSA)
RNAV (GPS) RWY 17