

LEXINGTON-PARSONS, TENNESSEE

AL-10185 (FAA)

24361

WAAS CH 90116 W01A	APP CRS 013°	Rwy Idg TDZE 467 Apt Elev 488	6000 467 488
--	------------------------	---	---

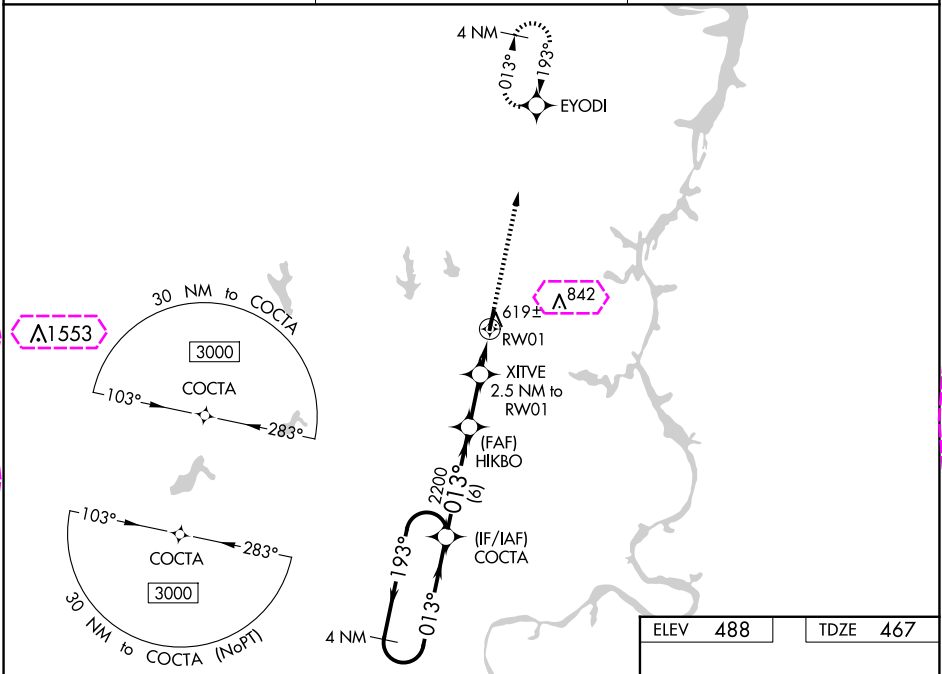
RNAV (GPS) RWY 1

BEECH RIVER RGNL (PVE)

⚠ For uncompensated Baro-VNAV systems, LNAV/VNAV NA below -15°C (5° F) or above 54°C (130°F).
⚠ DME/DMR RNP-0.3 NA. When local altimeter setting not received, use Jackson altimeter setting: increase LPV all Cats DA to 807 and all Cats visibility ¾ mile; increase LNAV/VNAV all Cats DA to 911 and all Cats visibility ¾ mile; increase all MDA 100 feet and LNAV Cats C/D and Circling Cat C visibility ½ mile and Circling Cat D visibility ½ mile. Baro-VNAV and VDP NA when using Jackson altimeter setting.

MISSED APPROACH:
Climb to 3000 direct EYODI and hold.

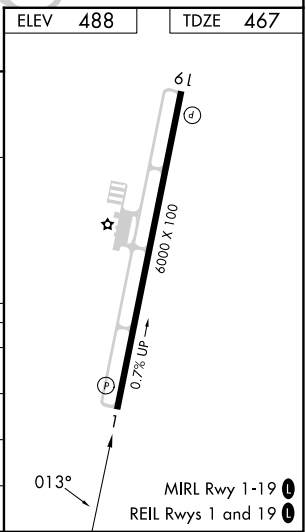
AWOS-3 118.125	MEMPHIS CENTER 125.85 379.25	UNICOM 123.0 (CTAF) 0
--------------------------	--	---------------------------------



VGSI and RNAV glidepath not coincident (VGSI Angle 3.09/TCH 37).

4 NM Holding Pattern	COCTA	HIKBO	XITVE	RW01
3000 ← 193°	2200	2200	2.5 NM to RW01	1.2 NM to RW01
013° →	013°	* 1280		
GP 3.00° TCH 40				
	6 NM	2.9 NM	1.3 NM	1.2 NM

CATEGORY	A	B	C	D
LPV DA		717-¾	250 (300-¾)	
LNAV/VNAV DA		821-1¼	354 (400-1¼)	
LNAV MDA	880-1	413 (400-1)	880-1½	413 (400-1½)
CIRCLING	940-1 452 (500-1)	980-1 492 (500-1)	1000-1½ 512 (600-1½)	1200-2¼ 712 (800-2¼)



LEXINGTON-PARSONS, TENNESSEE
Amdt 1 15OCT15

35°39'N-88°12'W

BEECH RIVER RGNL (PVE)
RNAV (GPS) RWY 1

SE-1, 10 JUL 2025 to 07 AUG 2025

SE-1, 10 JUL 2025 to 07 AUG 2025

LEXINGTON-PARSONS, TENNESSEE

AL-10185 (FAA)

25219

WAAS CH 90116 W01A	APP CRS 013°	Rwy Ldg TDZE Apt Elev	6000 467 488
--	------------------------	-----------------------------	---

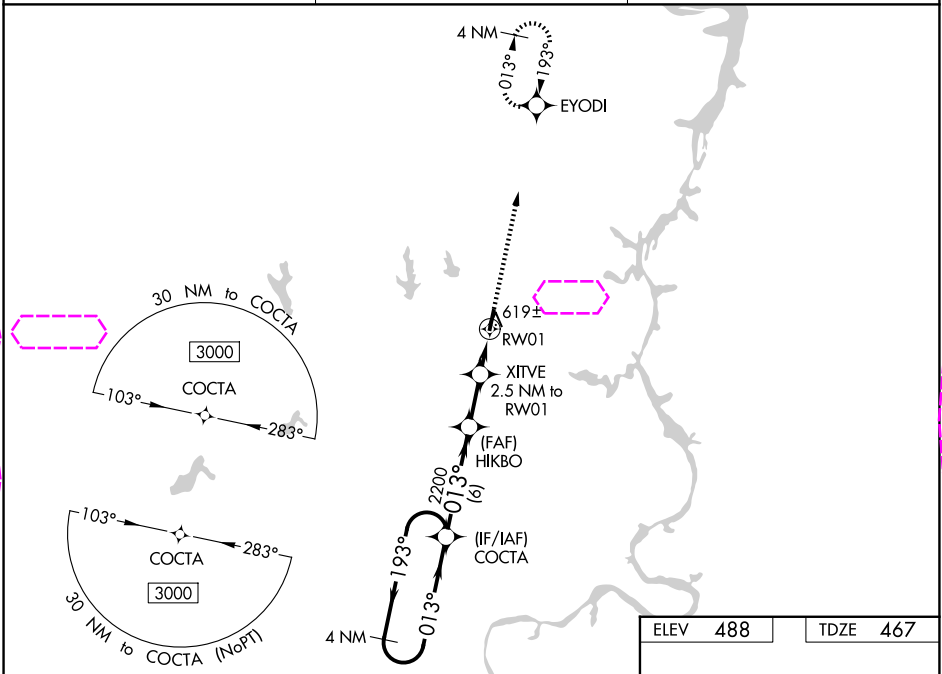
RNAV (GPS) RWY 1

BEECH RIVER RGNL (PVE)

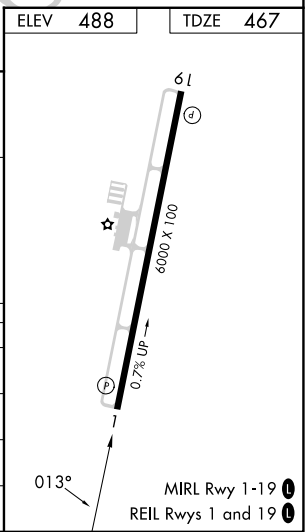
For uncompensated Baro-VNAV systems, LNAV/VNAV NA below -15°C (5° F) or above 54°C (130°F).
DME/DME RNP-0.3 NA. When local altimeter setting not received, use Jackson altimeter setting: increase LPV all Cats DA to 807 and all Cats visibility ¾ mile; increase LNAV/VNAV all Cats DA to 911 and all Cats visibility ¾ mile; increase all MDA 100 feet and LNAV Cats C/D and Circling Cat C visibility ½ mile and Circling Cat D visibility ½ mile. Baro-VNAV and VDP NA when using Jackson altimeter setting.

MISSED APPROACH:
Climb to 3000 direct EYODI and hold.

AWOS-3 118.125	MEMPHIS CENTER 125.85 379.25	UNICOM 123.0 (CTAF)
--------------------------	--	-------------------------------



4 NM Holding Pattern		VGSI and RNAV glidepath not coincident (VGSI Angle 3.09/TCH 37).		3000	EYODI
COCTA		HIKBO	XITVE	* LNAV only	
3000 ← 193°		2200	2.5 NM to RW01	* 1.2 NM to RW01	
013° →		2200		RW01	
GP 3.00°					
TCH 40					
6 NM		2.9 NM	1.3 NM	1.2 NM	
CATEGORY	A	B	C	D	
LPV DA	717-¾		250 (300-¾)		
LNAV/VNAV DA	821-1¼		354 (400-1¼)		
LNAV MDA	880-1	413 (400-1)	880-1½	413 (400-1½)	
CIRCLING	940-1	980-1	1000-1½	1200-2¼	
	452 (500-1)	492 (500-1)	512 (600-1½)	712 (800-2¼)	



LEXINGTON-PARSONS, TENNESSEE
Amdt 1 15OCT15

35°39'N-88°12'W

BEECH RIVER RGNL (PVE)
RNAV (GPS) RWY 1