

LEXINGTON-PARSONS, TENNESSEE

AL-10185 (FAA)

24361

WAAS CH <b>97316</b> <b>W19A</b>	APP CRS <b>193°</b>	Rwy Idg TDZE Apt Elev	<b>6000</b> <b>488</b> <b>488</b>
--	------------------------	-----------------------------	---

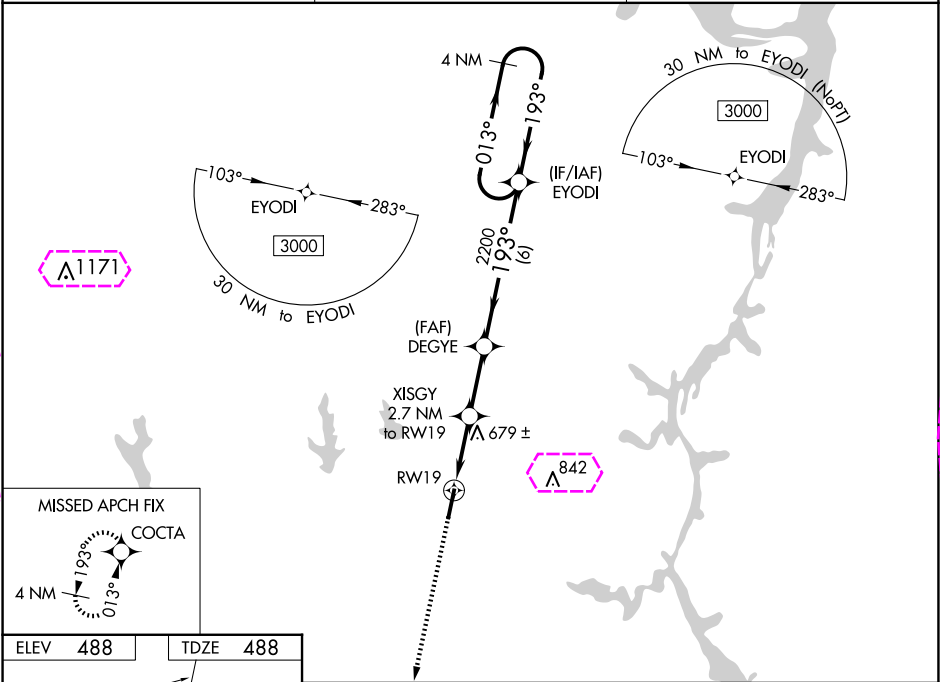
# RNAV (GPS) RWY 19

BEECH RIVER RGNL (PVE)

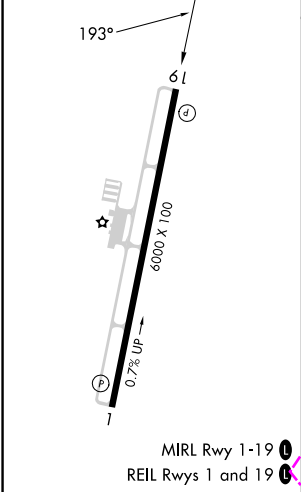
▼ For uncompensated Baro-VNAV systems, LNAV/VNAV NA below -15°C (5 °F) or above 54 °C (130°F).  
▲ DME/DME RNP-0.3 NA. When local altimeter setting not received, use Jackson altimeter setting: increase LPV all Cats DA to 828 and all Cats visibility ¼ mile; increase LNAV/VNAV all Cats DA to 890 and all Cats visibility ⅓ mile; increase all MDA 100 feet and LNAV Cats C/D and Circling Cat C visibility ¼ mile and Circling Cat D visibility ½ mile. VDP and Baro-VNAV NA when using Jackson altimeter setting.



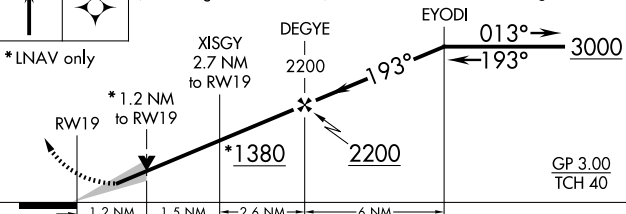
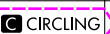
MISSED APPROACH: Climb to 3000 direct COCTA and hold.

AWOS-3 <b>118.125</b>	MEMPHIS CENTER <b>125.85 379.25</b>	UNICOM <b>123.0 (CTAF) 0</b>
--------------------------	--	---------------------------------



ELEV <b>488</b>	TDZE <b>488</b>
-----------------	-----------------



3000	COCTA	VGSI and RNAV glidepath not coincident (VGSI Angle 3.29/TCH 30).		4 NM Holding Pattern
				
*LNAV only		XISGY 2.7 NM to RW19	DEGYE 2200	EYODI
		*1.2 NM to RW19	*1380	2200
		RW19		GP 3.00 TCH 40
		1.2 NM	1.5 NM	2.6 NM
				6 NM
CATEGORY	A	B	C	D
LPV DA	738-7 <sup>8</sup>		250 (300-7 <sup>8</sup> )	
LNAV/ VNAV DA	800-1		312 (400-1)	
LNAV MDA	940-1	452 (500-1)	940-1 <sup>3</sup> <sub>8</sub>	452 (500-1 <sup>3</sup> <sub>8</sub> )
 CIRCLING	940-1 452 (500-1)	980-1 492 (500-1)	1000-1 <sup>1</sup> <sub>2</sub> 512 (600-1 <sup>1</sup> <sub>2</sub> )	1200-2 <sup>1</sup> <sub>4</sub> 712 (800-2 <sup>1</sup> <sub>4</sub> )

LEXINGTON-PARSONS, TENNESSEE  
Amdt 1 15OCT15

35°39'N-88°12'W

# RNAV (GPS) RWY 19

BEECH RIVER RGNL (PVE)

SE-1, 10 JUL 2025 to 07 AUG 2025

SE-1, 10 JUL 2025 to 07 AUG 2025

LEXINGTON-PARSONS, TENNESSEE

AL-10185 (FAA)

25219

WAAS CH <b>97316</b> <b>W19A</b>	APP CRS <b>193°</b>	Rwy Ldg TDZE Apt Elev	<b>6000</b> <b>488</b> <b>488</b>
--	------------------------	-----------------------------	---

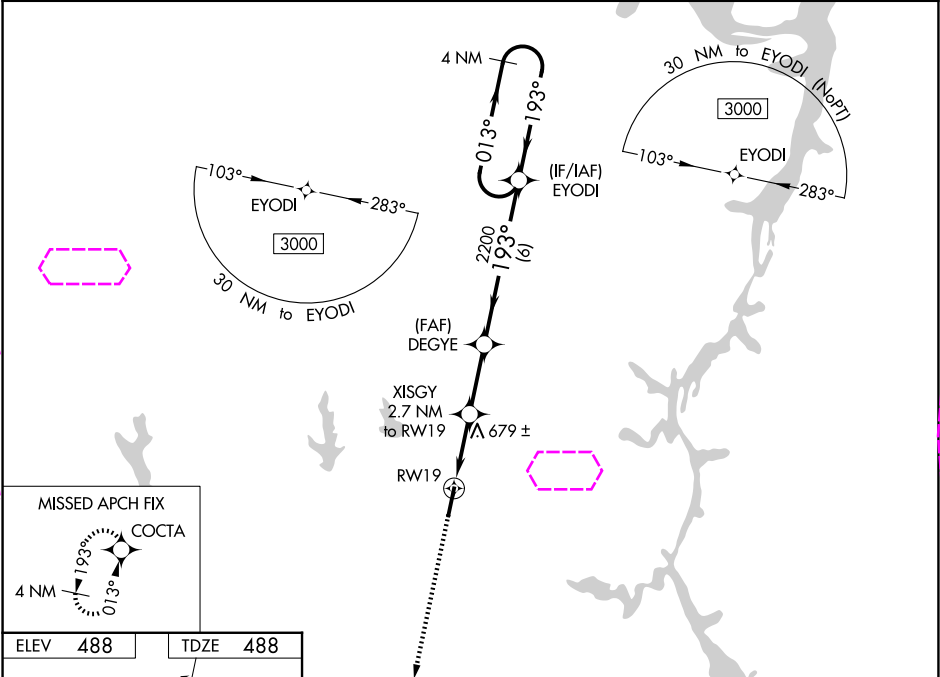
# RNAV (GPS) RWY 19

BEECH RIVER RGNL (PVE)

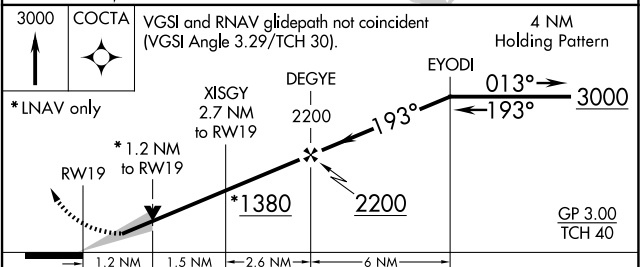
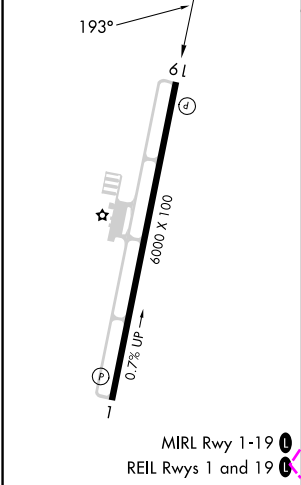
▼ For uncompensated Baro-VNAV systems, LNAV/VNAV NA below -15°C (5 °F) or above 54 °C (130°F).  
▲ DME/DME RNP-0.3 NA. When local altimeter setting not received, use Jackson altimeter setting: increase LPV all Cats DA to 828 and all Cats visibility ¼ mile; increase LNAV/VNAV all Cats DA to 890 and all Cats visibility ⅓ mile; increase all MDA 100 feet and LNAV Cats C/D and Circling Cat C visibility ¼ mile and Circling Cat D visibility ½ mile. VDP and Baro-VNAV NA when using Jackson altimeter setting.

MISSED APPROACH: Climb to 3000 direct COCTA and hold.

AWOS-3 <b>118.125</b>	MEMPHIS CENTER <b>125.85 379.25</b>	UNICOM <b>123.0</b> (CTAF) <b>0</b>
--------------------------	--	--



ELEV <b>488</b>	TDZE <b>488</b>
-----------------	-----------------



CATEGORY	A	B	C	D
LPV DA	738-7/8	250 (300-7/8)		
LNAV/VNAV DA	800-1	312 (400-1)		
LNAV MDA	940-1	452 (500-1)	940-1 3/8	452 (500-1 3/8)
CIRCLING	940-1 452 (500-1)	980-1 492 (500-1)	1000-1 1/2 512 (600-1 1/2)	1200-2 1/4 712 (800-2 1/4)

LEXINGTON-PARSONS, TENNESSEE

Amdt 1 15OCT15

35°39'N-88°12'W

BEECH RIVER RGNL (PVE)

# RNAV (GPS) RWY 19