

CARUTHERSVILLE, MISSOURI

AL-10183 (FAA)

23222

WAAS CH 77609 W36A	APP CRS 359°	Rwy Idg TDZE Apt Elev 4003 266 268
--	------------------------	--

RNAV (GPS) RWY 36

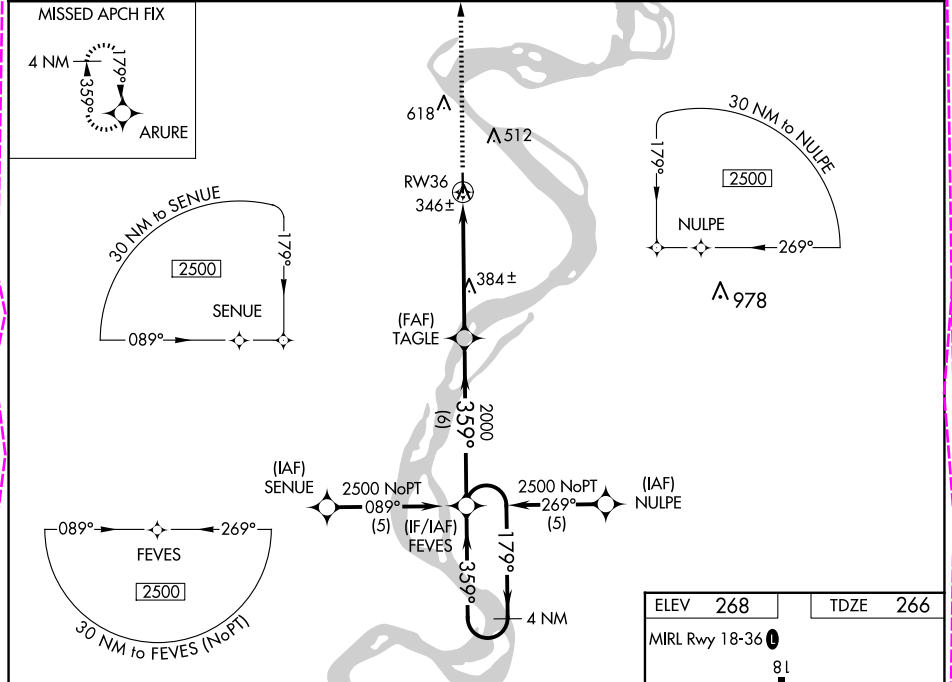
CARUTHERSVILLE MEML (M05)

NA

Baro-VNAV NA. DME/DME RNP-0.3 NA.
Helicopter visibility reduction below 1 SM NA.
Use Blytheville Muni altimeter setting; when not received, use
Dyersburg altimeter setting and increase LPV DA to 642 feet,
LNAV/VNAV DA to 706 feet, and all MDA 20 feet.
Procedure NA at night.

MISSED APPROACH: Climb to 2500 direct
ARURE and hold.

MEMPHIS CENTER 134.65 316.15	CTAF 122.9 0
--	------------------------



2500

↑

ARURE

FEVES

4 NM Holding Pattern

179°

359°

2500

359°

2000

TAGLE

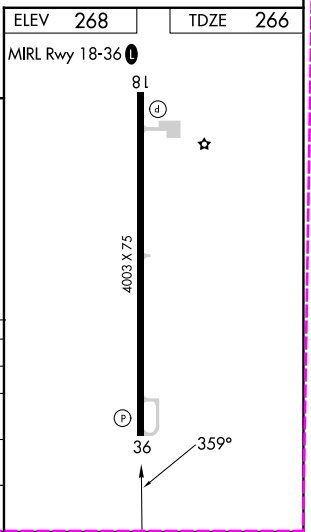
RW36

5.2 NM

6 NM

GP 3.00° TCH 40

CATEGORY	A	B	C	D
LPV DA	631-1¼	365 (400-1¼)		NA
LNAV/VNAV DA	695-1½	429 (500-1½)		NA
LNAV MDA	680-1	414 (500-1)	680-1¼ 414 (500-1¼)	NA
CIRCLING	820-1 552 (600-1)	860-1 592 (600-1)	1020-2¼ 752 (800-2¼)	NA



CARUTHERSVILLE, MISSOURI
Amdt 1B 22APR21

36°10'N-89°41'W

CARUTHERSVILLE MEML (M05)
RNAV (GPS) RWY 36

NC-3, 10 JUL 2025 to 07 AUG 2025

NC-3, 10 JUL 2025 to 07 AUG 2025

CARUTHERSVILLE, MISSOURI

AL-10183 (FAA)

25219

WAAS CH 77609 W36A	APP CRS 359°	Rwy Ldg TDZE Apt Elev 4003 268 268
--	------------------------	--

RNAV (GPS) RWY 36

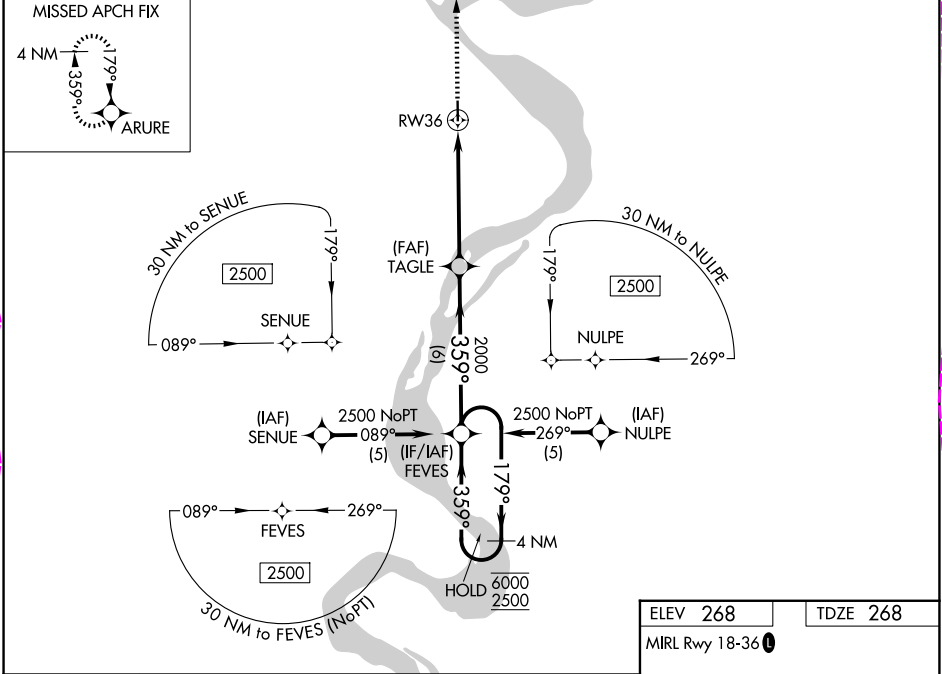
CARUTHERSVILLE MEML (M05)

RNP APCH - GPS.

Baro-VNAV NA. Rwy 36 helicopter visibility reduction below 1 SM NA.
Procedure NA at night. Use HKA altimeter setting; when not received, use
DYR altimeter setting and increase LPV DA to 641 feet; increase LNAV/VNAV
DA to 705 feet; increase all MDAs 20 feet and LNAV visibility Cat C 1/8 SM.

MISSED APPROACH: Climb to 2500 direct ARURE and hold.

HKA ASOS 135.025	MEMPHIS CENTER 134.65 316.15	CTAF 122.9 0
----------------------------	--	------------------------



2500

ARURE

↑

✱

FEVES

4 NM Holding Pattern

179° →

← 359°

6000

2500

GP 3.04°

TCH 40

TAGLE

2000

359°

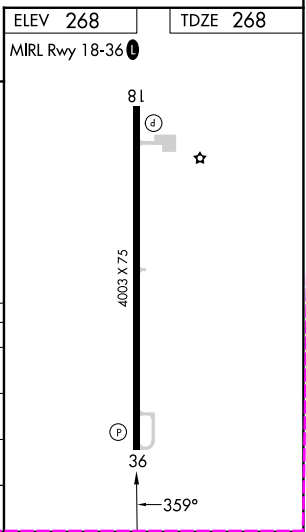
2000

5.2 NM

6 NM

RW36

CATEGORY	A	B	C	D
LPV DA	631-1 363 (400-1)			NA
LNAV/VNAV DA	695-1¼ 427 (500-1¼)			NA
LNAV MDA	780-1	512 (600-1)	780-1⅜ 512 (600-1⅜)	NA
CIRCLING	820-1 552 (600-1)	860-1 592 (600-1)	1020-2¼ 752 (800-2¼)	NA



CARUTHERSVILLE, MISSOURI

Amdt 1C 07AUG25

36°10'N-89°41'W

RNAV (GPS) RWY 36

NC-3, 07 AUG 2025 to 04 SEP 2025

NC-3, 07 AUG 2025 to 04 SEP 2025