

CARUTHERSVILLE, MISSOURI

AL-10183 (FAA)

23222

WAAS CH <b>78109</b> <b>W18A</b>	APP CRS <b>179°</b>	Rwy ldg <b>4003</b> TDZE <b>268</b> Apt Elev <b>268</b>
--	------------------------	---

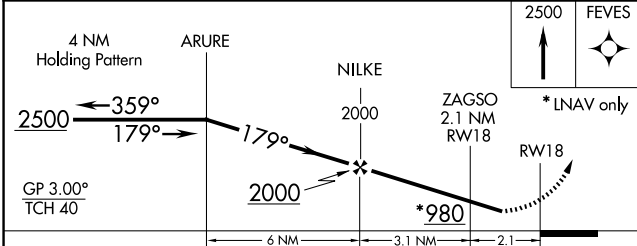
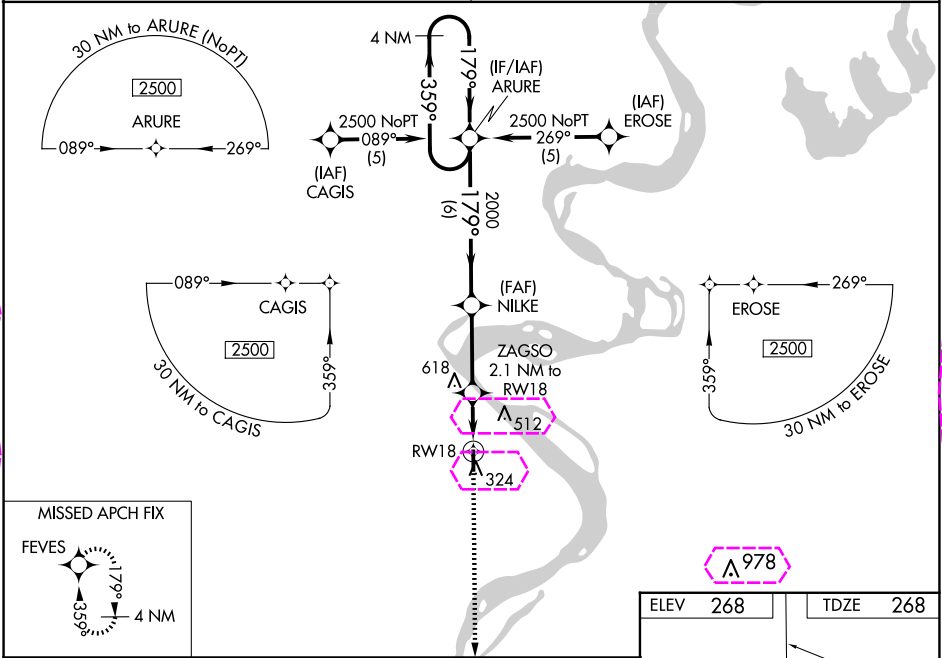
# RNAV (GPS) RWY 18

CARUTHERSVILLE MEML (M05)

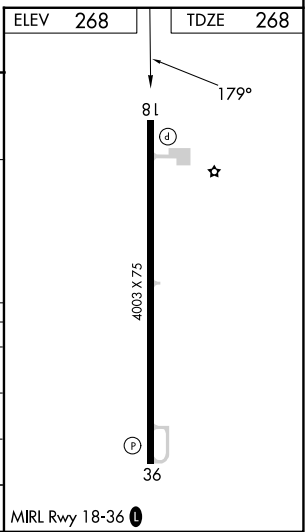
**NA** Baro-VNAV NA. DME/DME RNP-0.3 NA. Helicopter visibility reduction below 1 SM NA. Use Blytheville Muni altimeter setting; when not received, use Dyersburg altimeter setting and increase LPV DA to 824 feet and LNAV/VNAV DA to 846 feet and all MDA 20 feet. Procedure NA at night.

**MISSED APPROACH:** Climb to 2500 direct FEVES and hold.

MEMPHIS CENTER <b>134.65 316.15</b>	CTAF <b>122.9 0</b>
--	------------------------



CATEGORY	A	B	C	D
LPV DA	813-2	545 (600-2)		NA
LNAV/VNAV DA	835-2	567 (600-2)		NA
LNAV MDA	780-1	512 (600-1)	780-1½ 512 (600-1½)	NA
CIRCLING	820-1 552 (600-1)	860-1 592 (600-1)	1020-2¼ 752 (800-2¼)	NA



CARUTHERSVILLE, MISSOURI  
Amdt 1C 22APR21

36°10'N-89°41'W

# RNAV (GPS) RWY 18

CARUTHERSVILLE, MISSOURI

AL-10183 (FAA)

25219

WAAS CH <b>78109</b> <b>W18A</b>	APP CRS <b>179°</b>	Rwy Ldg <b>4003</b> TDZE <b>268</b> Apt Elev <b>268</b>
--	------------------------	---

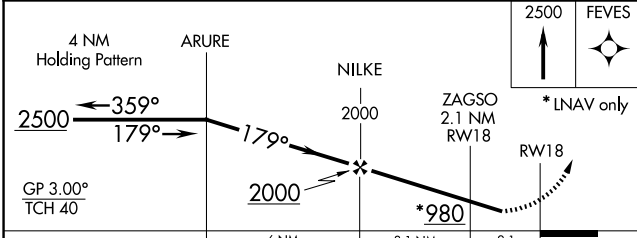
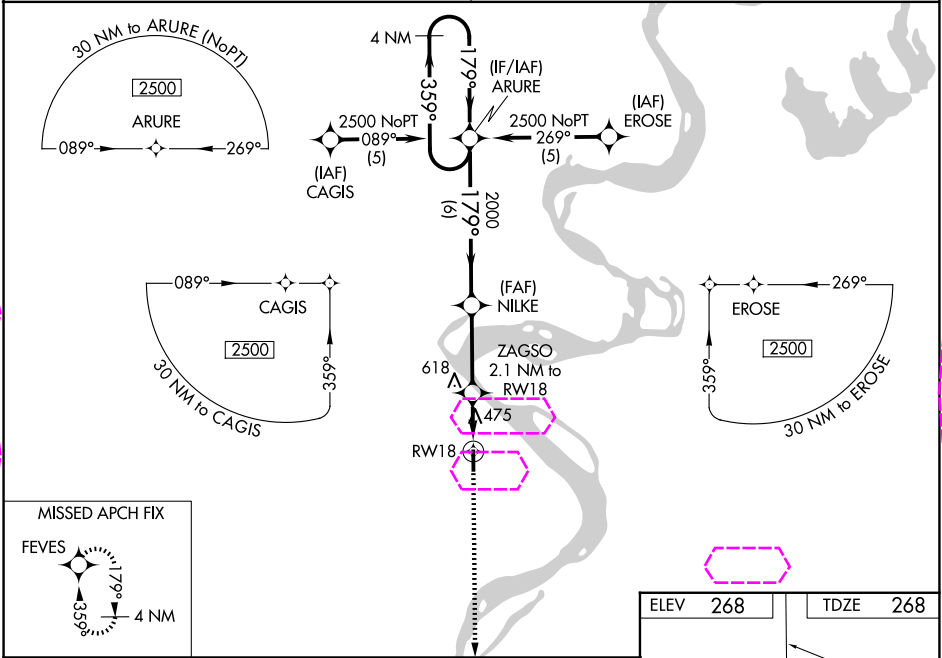
# RNAV (GPS) RWY 18

CARUTHERSVILLE MEML (M05)

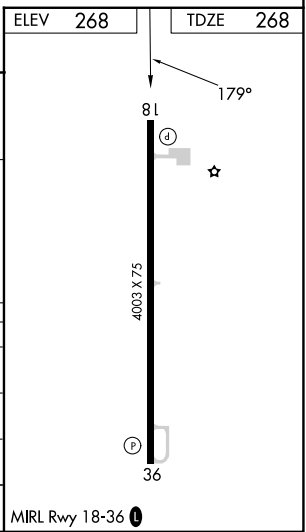
**NA** Baro-VNAV NA. DME/DME RNP-0.3 NA. Helicopter visibility reduction below 1 SM NA. Use Blytheville Muni altimeter setting; when not received, use Dyersburg altimeter setting and increase LPV DA to 824 feet and LNAV/VNAV DA to 846 feet and all MDA 20 feet. Procedure NA at night.

MISSED APPROACH: Climb to 2500 direct FEVES and hold.

MEMPHIS CENTER <b>134.65 316.15</b>	CTAF <b>122.9 0</b>
--	------------------------



CATEGORY	A	B	C	D
LPV DA	813-2	545 (600-2)		NA
LNAV/VNAV DA	835-2	567 (600-2)		NA
LNAV MDA	780-1	512 (600-1)	780-1½ 512 (600-1½)	NA
CIRCLING	820-1 552 (600-1)	860-1 592 (600-1)	1020-2¼ 752 (800-2¼)	NA



CARUTHERSVILLE, MISSOURI  
Amdt 1C 22APR21

36°10'N-89°41'W

# RNAV (GPS) RWY 18